

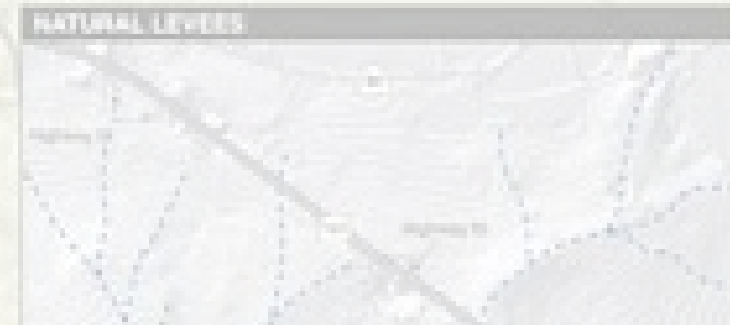


Artificial bodies of water, modern



SAN FRANCISQUITO CREEK JOINT POWERS AUTHORITY

**SPECIAL Meeting of the Board of Directors
March 9, 2023**



A topographic map of the San Francisco Peninsula showing various watersheds. The map is color-coded: blue for water bodies, green for forested areas, and tan for urban or developed areas. Key locations labeled include Atherton, Menlo Park, Palo Alto, East Palo Alto, Mountain View, and Portola Valley. A legend in the top left corner identifies 'Artificial bodies of water, modern' with a blue icon. A white box in the top left corner contains the word 'AGENDA' in large, bold, black letters. A list of agenda items is overlaid on the map. A small inset map in the bottom right corner shows a larger geographic context.

AGENDA

Members of the Public may speak on any agenda item for up to three minutes

1. ROLL CALL

2. APPROVAL OF AGENDA: Changes or additions to the agenda.

3. Approval of Meeting Minutes: January 26, 2022.

4. PUBLIC COMMENT: Individuals may speak on a non-agendized topic for up to three minutes on a topic within the SFCJPA's jurisdiction.

AGENDA ITEM 5 – CONSENT AGENDA

Agenda Item 5.A. - Draft 2023 Board Meeting Schedule

Regular Board of Directors Meetings
Meetings are held monthly on the Fourth Thursday of the month beginning at 3:30 p.m.

January 26, 2023
Video/teleconference

March 23, 2023
City of Menlo Park
Council Chambers
701 Laurel Street
Menlo Park, CA

May 25, 2023
City of Palo Alto
Council Chambers
250 Hamilton Ave
Palo Alto, CA

July 27, 2023
(Board recess. No meeting)

September 28, 2023
City of Palo Alto
250 Hamilton Ave
Palo Alto, CA

November 16, 2023
City of East Palo
2415 University Ave
East Palo Alto, CA

February 23, 2023
Video/teleconference

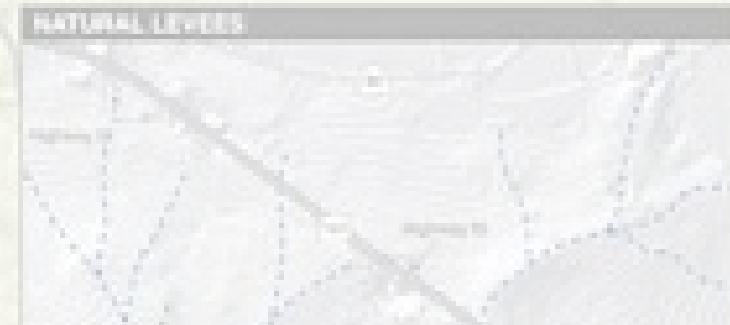
April 27, 2023
City of East Palo Alto
Council Chambers
2415 University Ave
East Palo Alto, CA

June 22, 2023
City of Menlo Park
Council Chambers
701 Laurel Street
Menlo Park, CA 94025

August 24, 2023
City of East Palo Alto
Council Chambers
2415 University Ave
East Palo Alto, CA

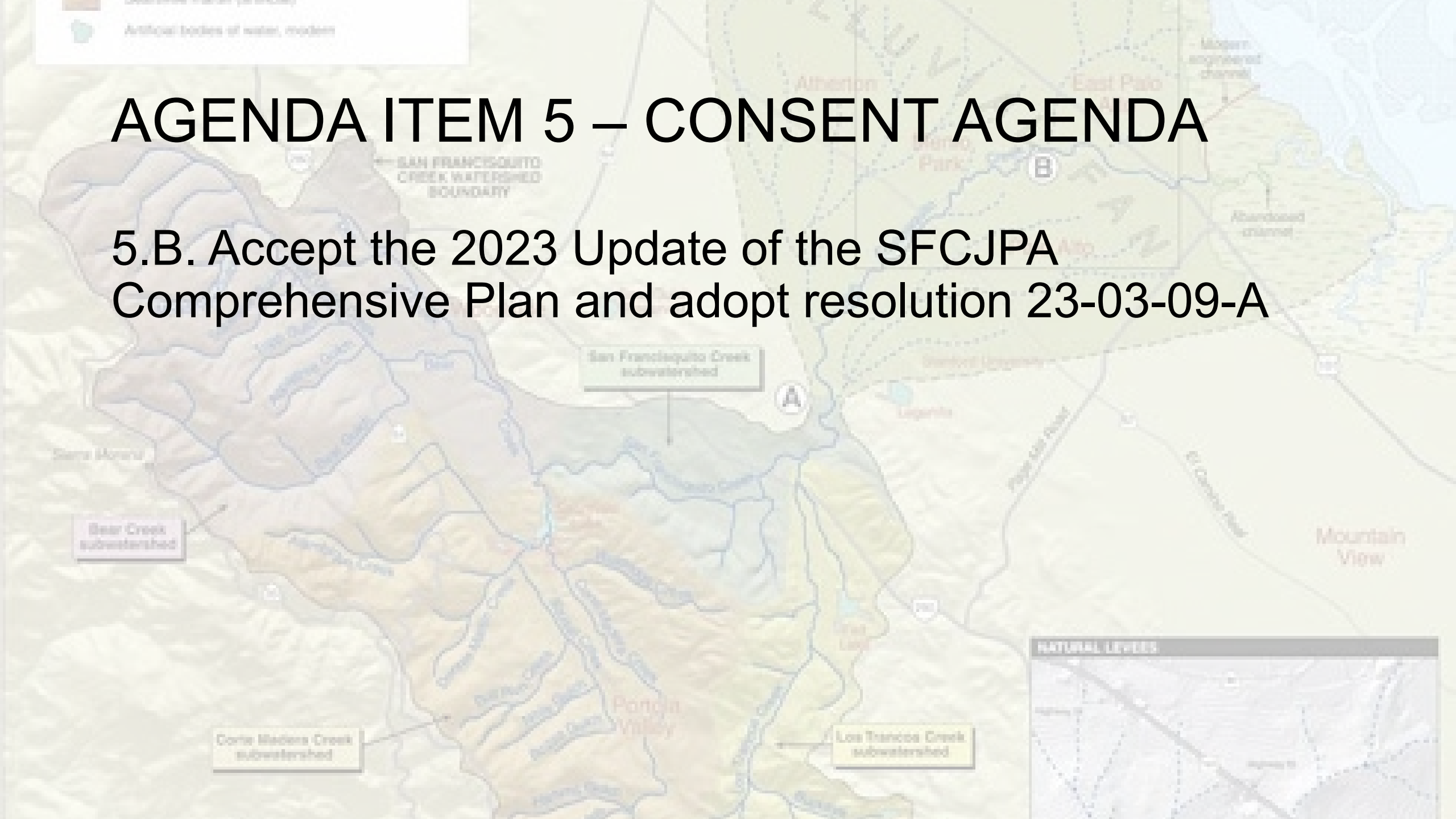
October 26, 2023
City of Menlo Park
701 Laurel Street
Menlo Park, CA

December 21, 2023
City of Menlo Park
701 Laurel Street
Menlo Park, CA
(City of Palo Alto not available.)



AGENDA ITEM 5 – CONSENT AGENDA

5.B. Accept the 2023 Update of the SFCJPA
Comprehensive Plan and adopt resolution 23-03-09-A



AGENDA ITEM 6 – ACTION ITEMS

6.A. Board organization and committee assignments

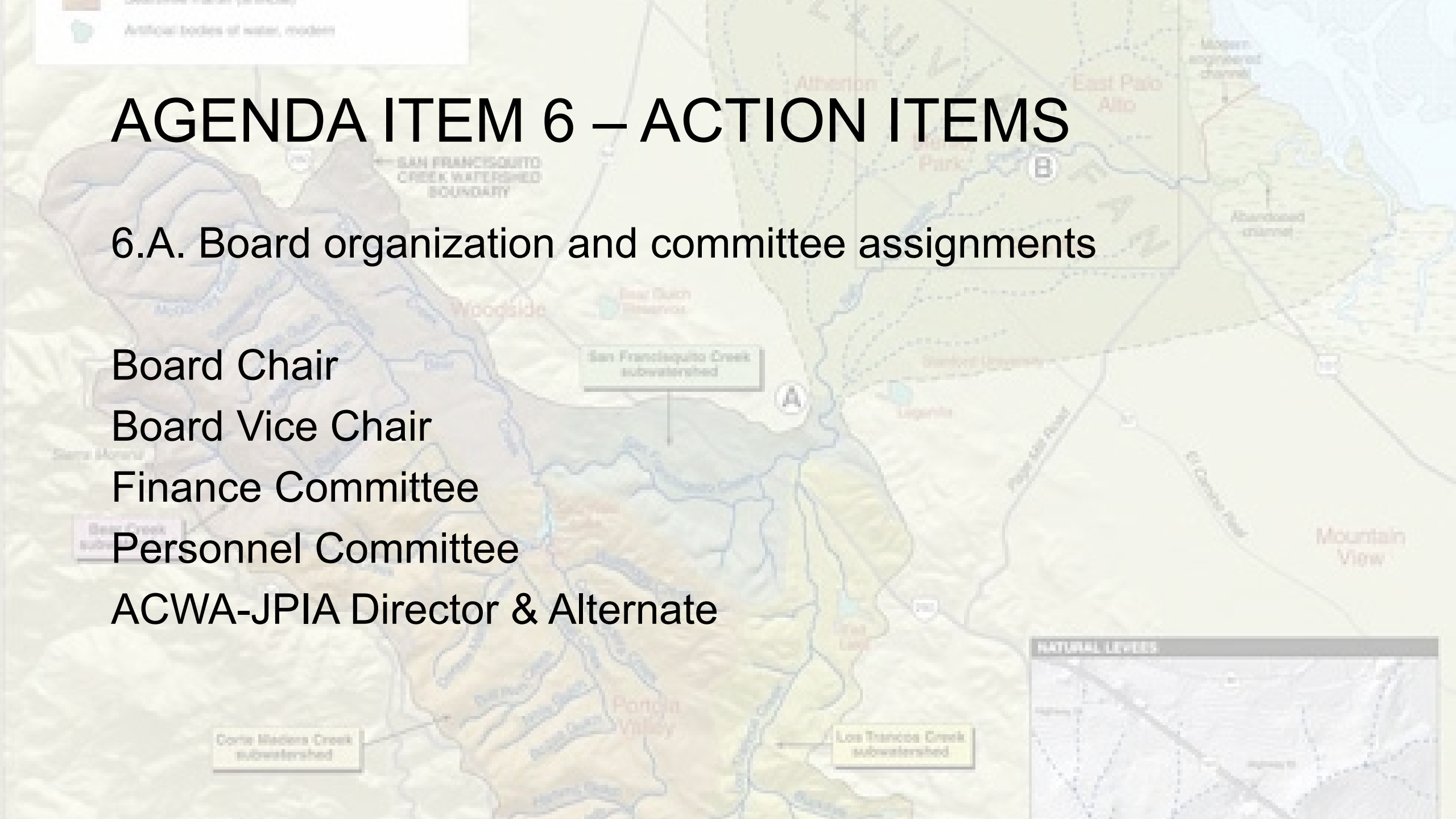
Board Chair

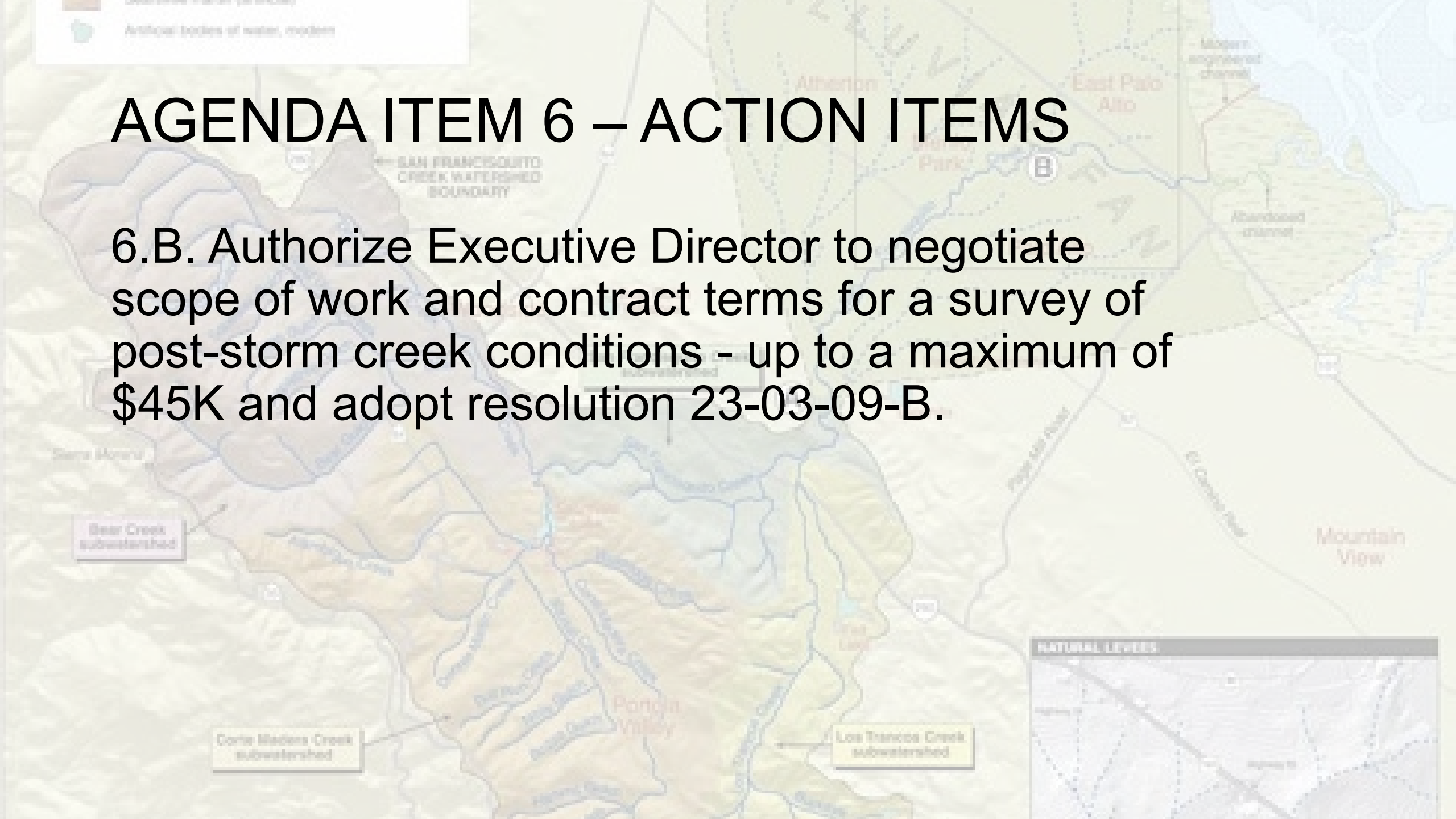
Board Vice Chair

Finance Committee

Personnel Committee

ACWA-JPIA Director & Alternate



A topographic map of the San Francisco Creek Watershed. The map shows various subwatersheds: Bear Creek, Corte Madera Creek, Portola Valley, and Los Trancos Creek. It also identifies artificial water bodies like modern and abandoned channels. Key locations such as Alhambra, East Palo Alto, Mountain View, and San Francisco are marked. A legend in the top left corner defines the symbols for artificial water bodies. A 'NATURAL LEVELS' inset map is located in the bottom right corner.

AGENDA ITEM 6 – ACTION ITEMS

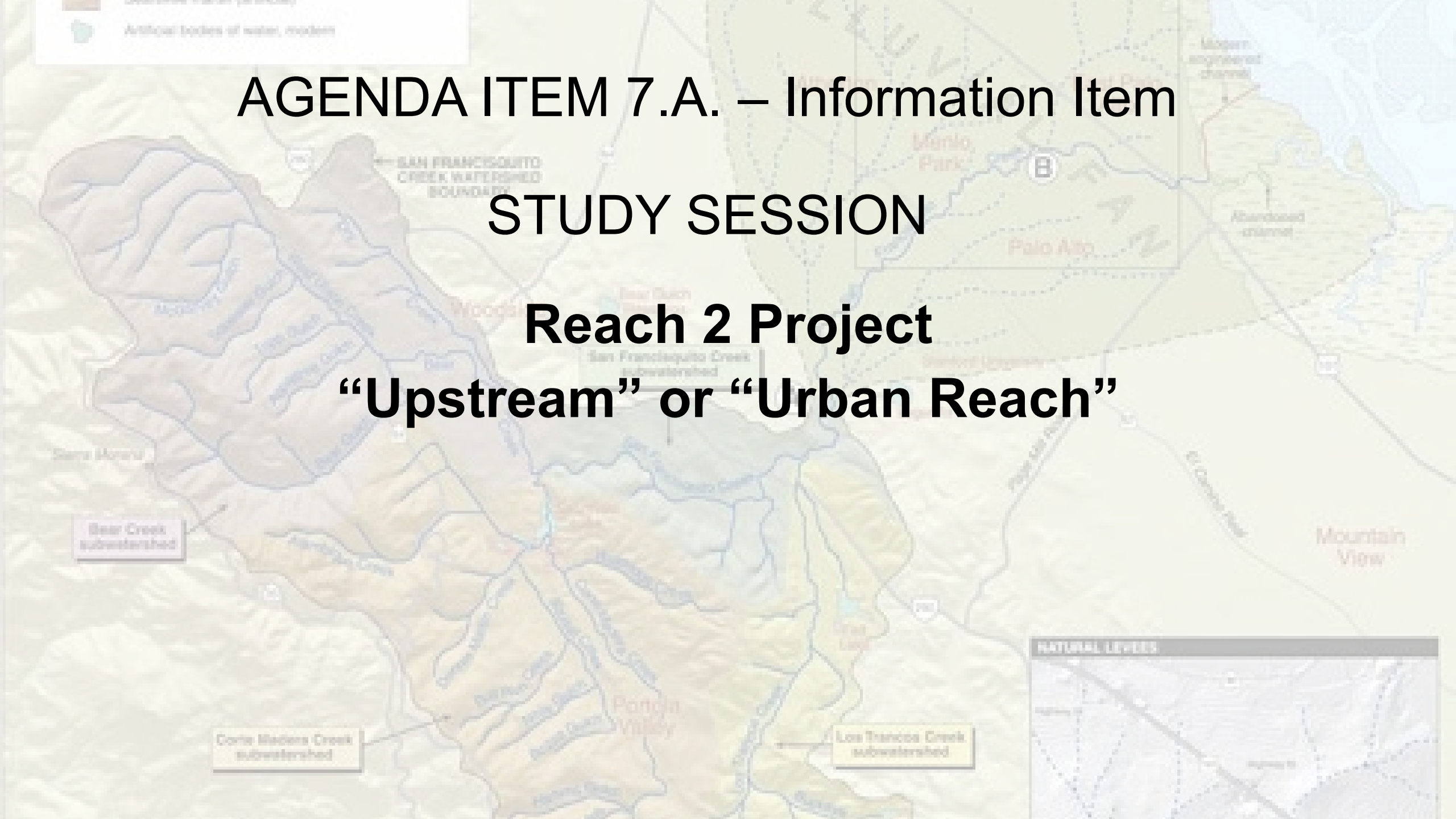
6.B. Authorize Executive Director to negotiate scope of work and contract terms for a survey of post-storm creek conditions - up to a maximum of \$45K and adopt resolution 23-03-09-B.

AGENDA ITEM 7.A. – Information Item

STUDY SESSION

Reach 2 Project

“Upstream” or “Urban Reach”



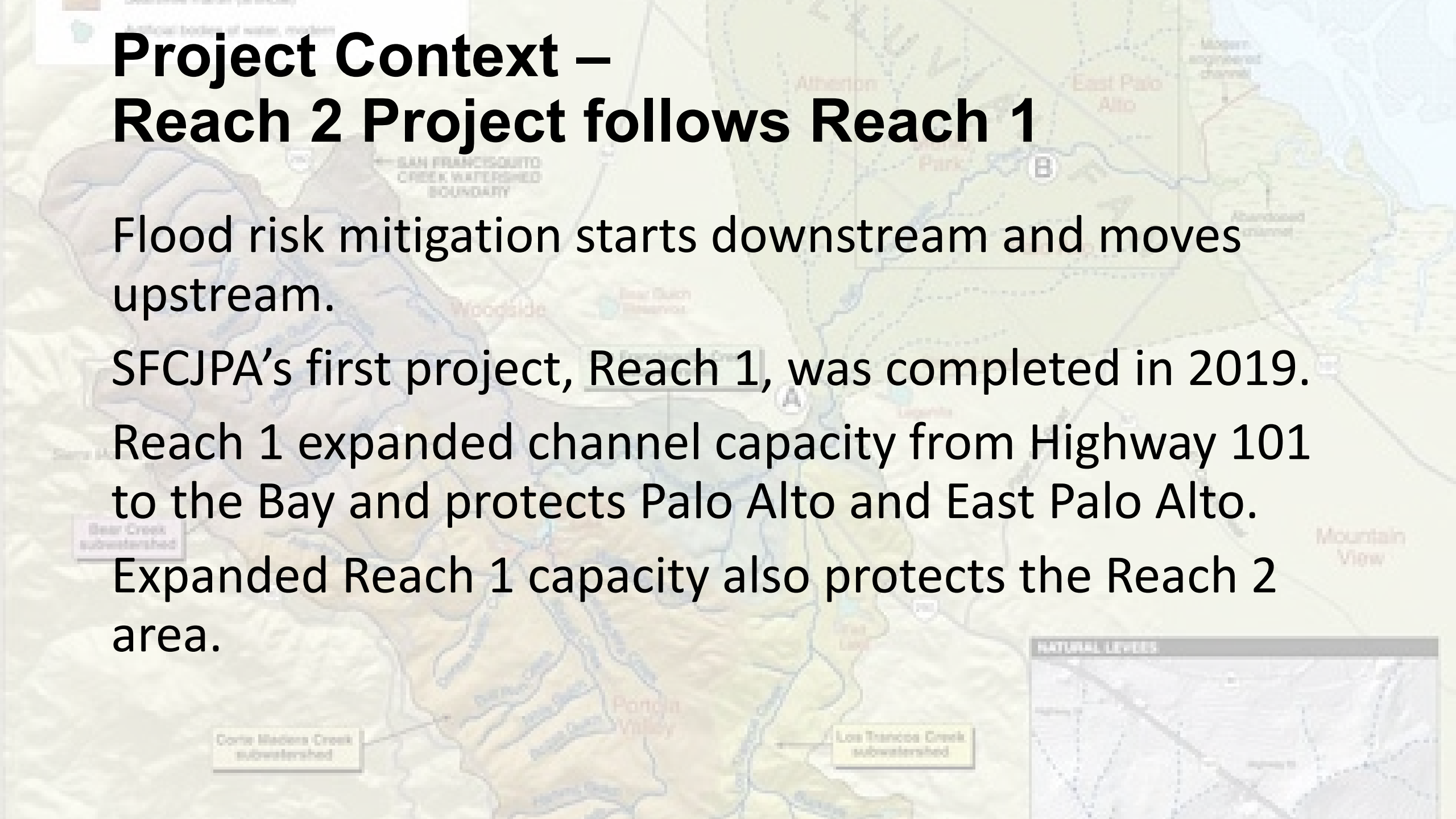
Project Context – Reach 2 Project follows Reach 1

Flood risk mitigation starts downstream and moves upstream.

SFCJPA's first project, Reach 1, was completed in 2019.

Reach 1 expanded channel capacity from Highway 101 to the Bay and protects Palo Alto and East Palo Alto.

Expanded Reach 1 capacity also protects the Reach 2 area.





FEMA 100 Year Flood Plain

A topographic map of the San Francisco Quinto Creek Watershed. The map shows the creek's path from the mountains in the north to the valley floor in the south. Key locations labeled include Alhambra, East Palo Alto, Park, Palo Alto, Los Altos, Mountain View, and Los Gatos. A legend in the top left corner identifies 'Artificial bodies of water, modern' with a blue icon. A dashed line indicates the 'SAN FRANCISCO CREEK WATERSHED BOUNDARY'. Other labels include 'Modern engineered channel' and 'Abandoned channel'. Three subwatershed areas are highlighted with boxes: 'Bear Creek subwatershed' (purple), 'Corte Madera Creek subwatershed' (grey), and 'Los Trancos Creek subwatershed' (yellow).

Reach 2 Project has four components

1. Newell Bridge replacement – Palo Alto leading
2. Channel Widening – USACE CAP205 Project with Valley Water support
3. Top-of-Bank – SFCJPA and Valley Water leading
4. Pope-Chaucer Bridge replacement – SFCJPA and Valley Water leading

Over-arching Reach 2 Project Objectives

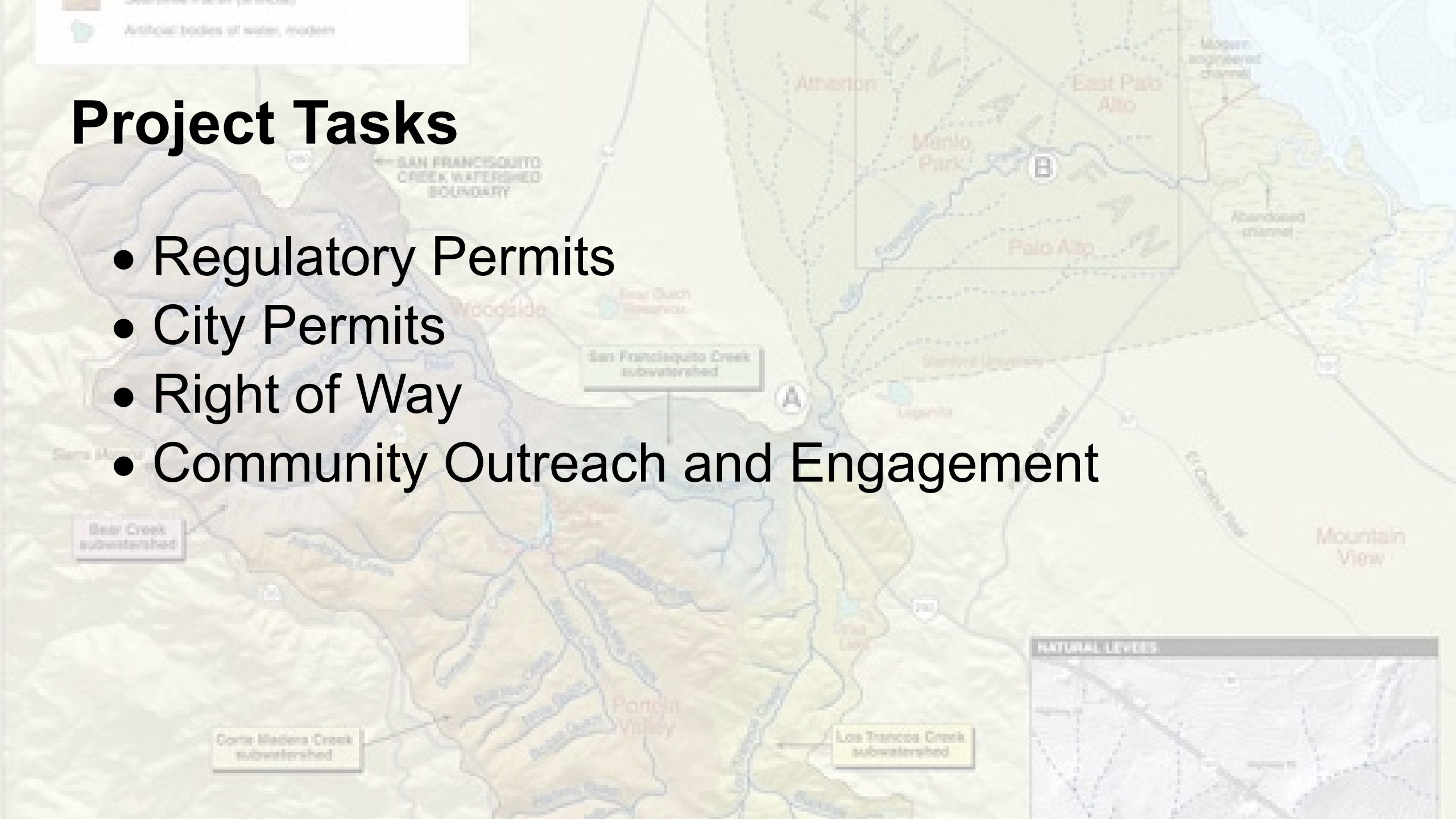
- Contain 70-year storm flow (the “flood of '98”)
- No transfer of risk downstream
- Design a project that regulatory agencies will permit



Photo credit: P. Burt, 31 Dec. 2022. Upstream face of Pope-Chaucer bridge

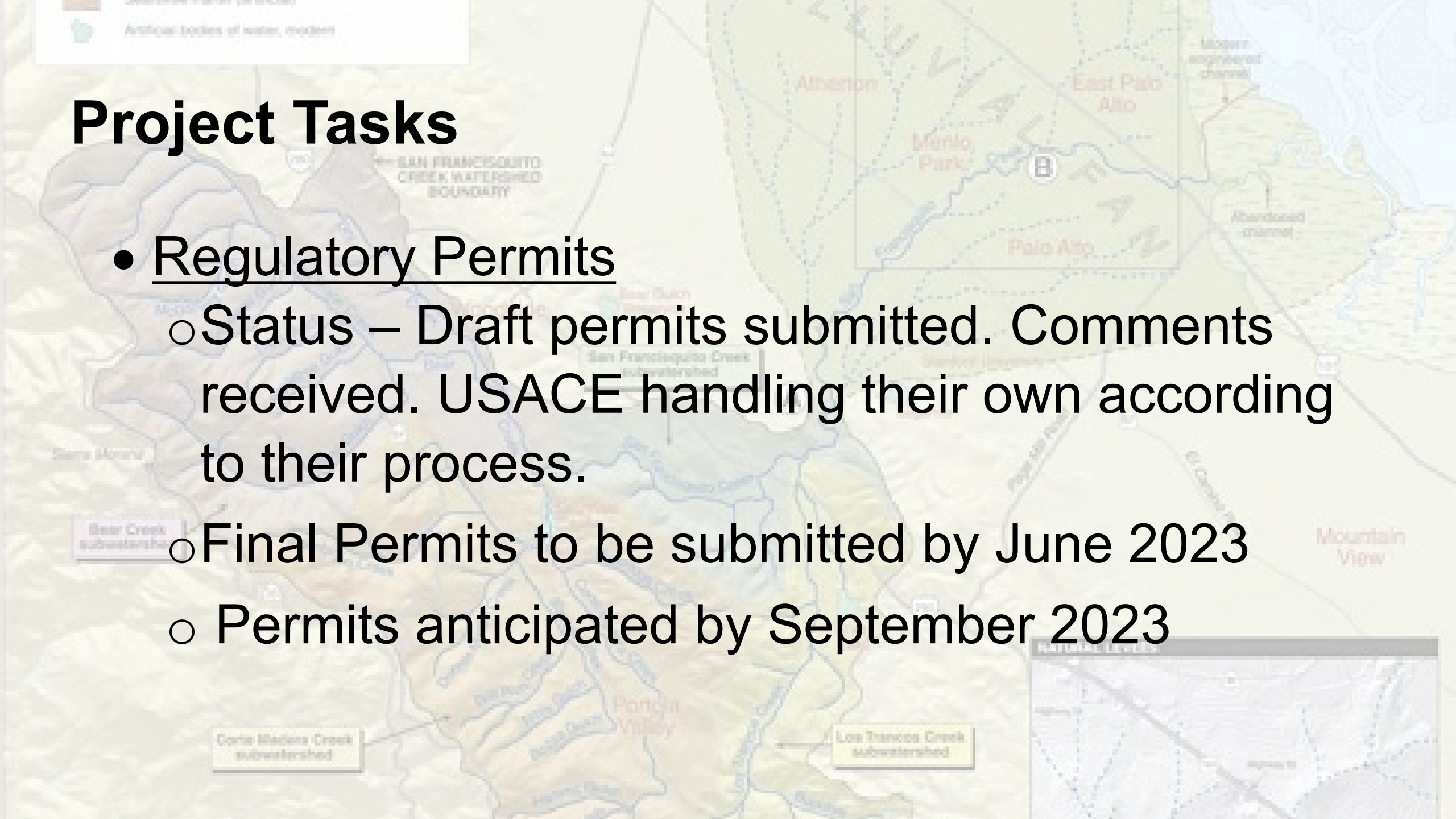
Project Tasks

- Regulatory Permits
- City Permits
- Right of Way
- Community Outreach and Engagement



Project Tasks

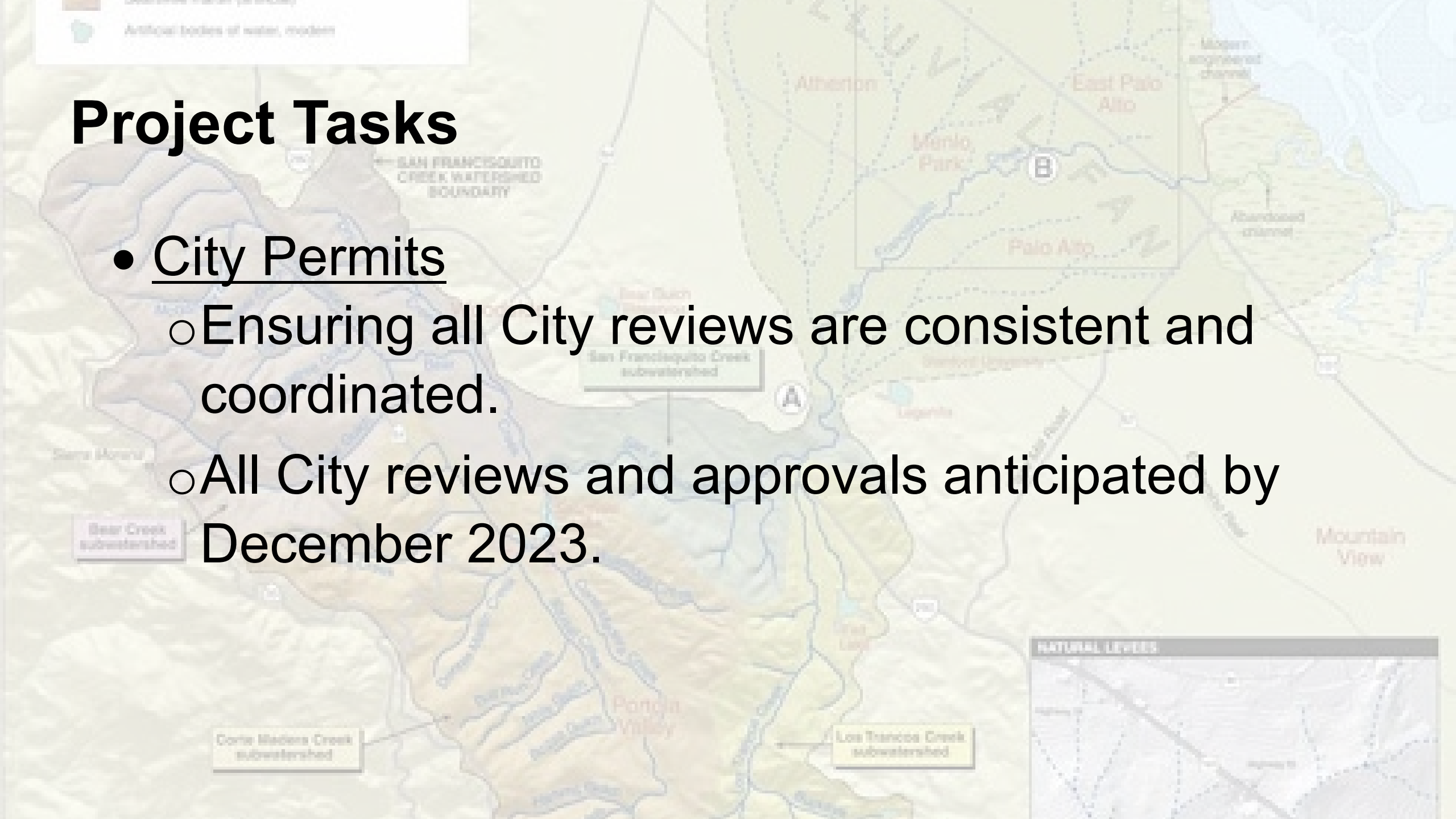
- Regulatory Permits
 - Status – Draft permits submitted. Comments received. USACE handling their own according to their process.
 - Final Permits to be submitted by June 2023
 - Permits anticipated by September 2023



Project Tasks

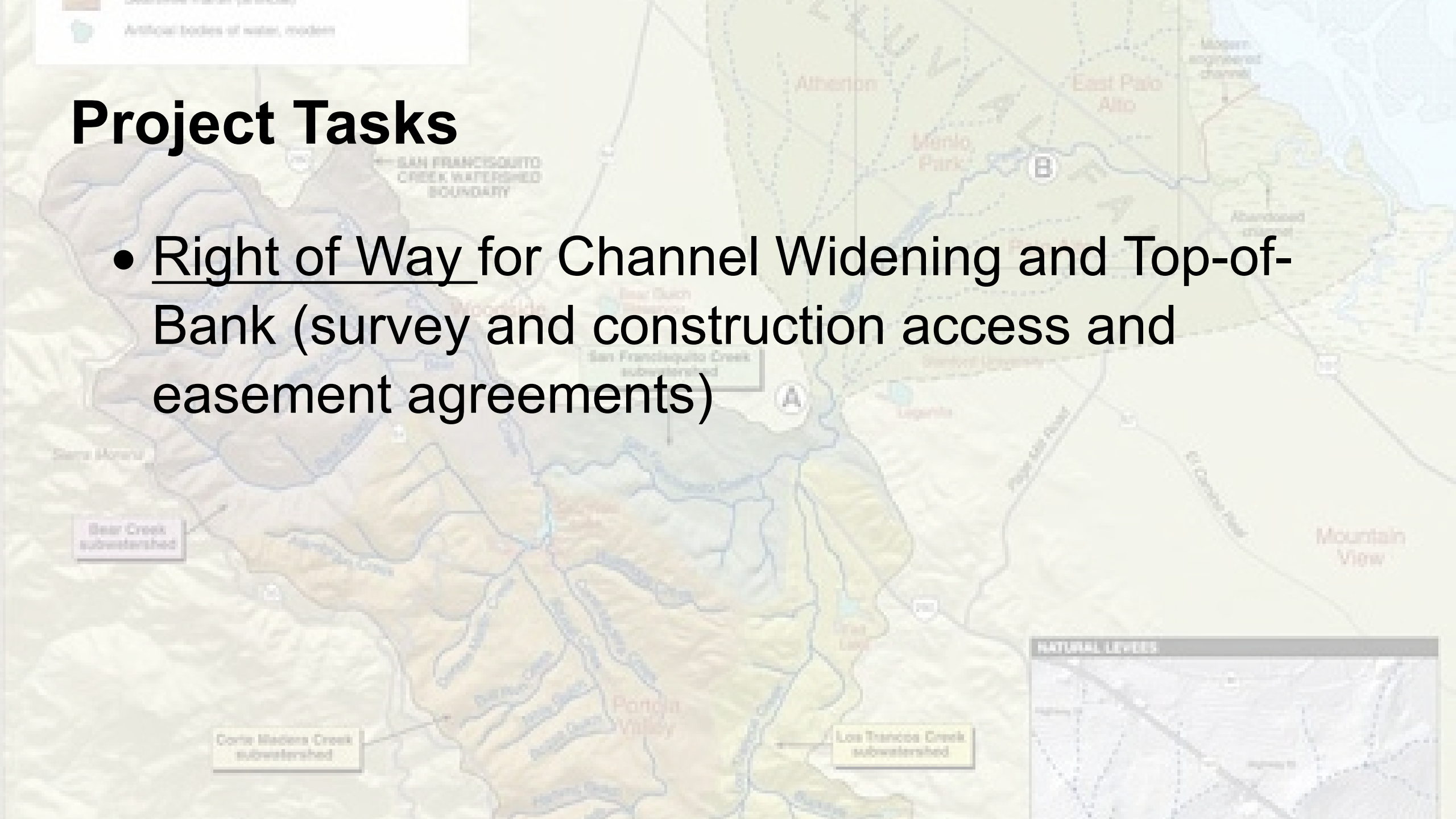
- City Permits

- Ensuring all City reviews are consistent and coordinated.
- All City reviews and approvals anticipated by December 2023.



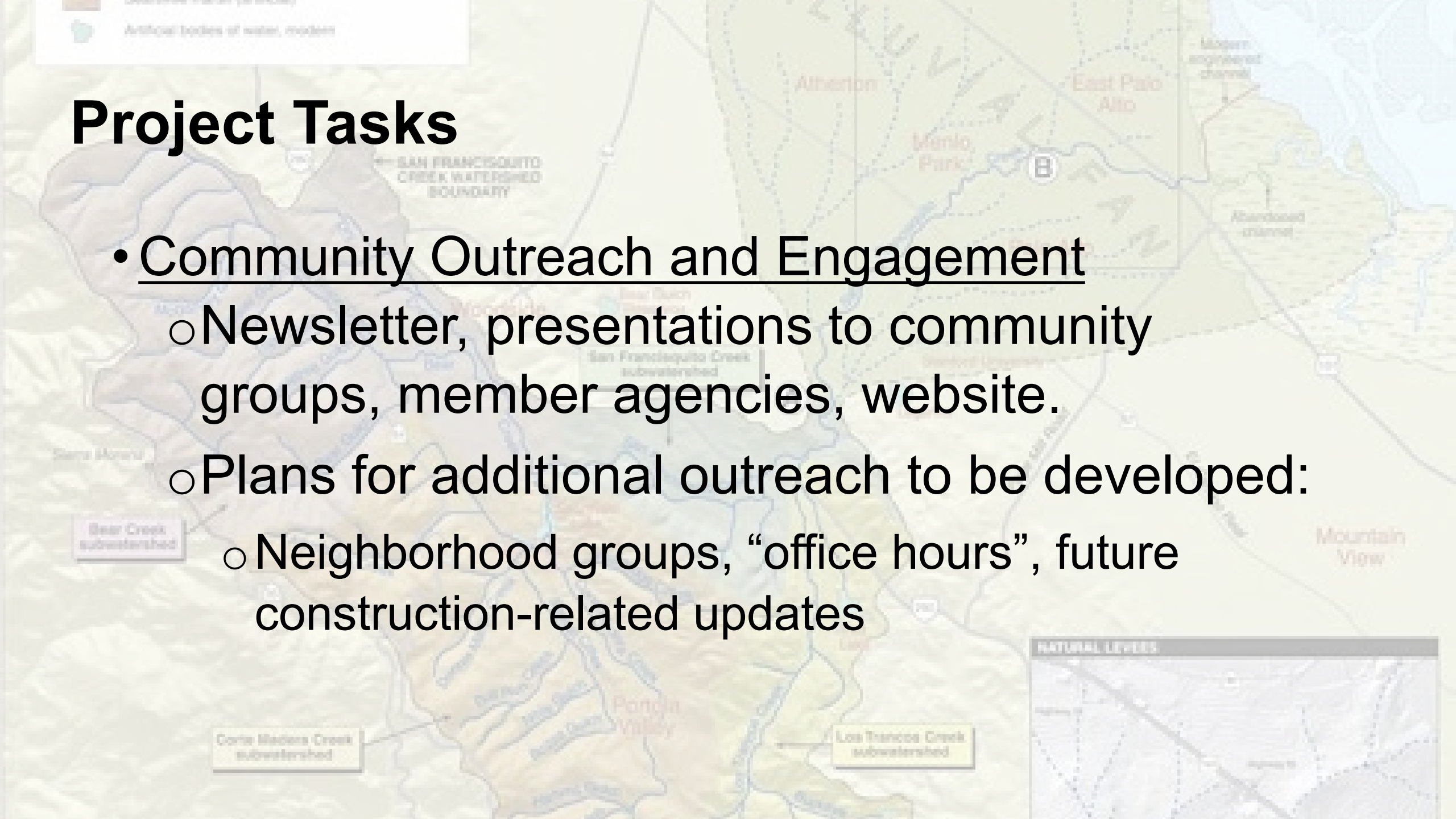
Project Tasks

- Right of Way for Channel Widening and Top-of-Bank (survey and construction access and easement agreements)



Project Tasks

- Community Outreach and Engagement
 - Newsletter, presentations to community groups, member agencies, website.
 - Plans for additional outreach to be developed:
 - Neighborhood groups, “office hours”, future construction-related updates





Lessons from the New Year's Eve storm

Hydraulic Model vs. Observed Creek Behavior

- Actual breakout locations different than predicted in model
- Channel erosion and scour occurred

Changes in creek behavior will require validating our designs for channel and top-of-bank project elements

Surveys, Hydraulic model confirmation, and design evaluation will be done over the next 2 – 5 months.

Components of the Reach 2 Project – in order of implementation

1. Newell Bridge – Palo Alto

- Status
- Funding
- Schedule
- Anticipated Completion



<https://www.cityofpaloalto.org/Departments/Public-Works/Engineering-Services/Engineering-Projects/Newell-Road>



Components of the Reach 2 Project - Continued

2. Channel Widening – U.S. Army Corps

- Status
- Funding
- Schedule
- Anticipated Completion



Components of the Reach 2 Project - Continued

3. Top-of-Bank Features – SFCJPA and Valley Water

- Status
- Funding
- Schedule
- Anticipated Completion



Components of the Reach 2 Project - Continued

4. Pope-Chaucer Bridge – SFCJPA and Valley Water

- Status
- Funding
- Schedule
- Anticipated Completion



Current Project Costs, Funding, and Funding Gap

PROJECT ELEMENT	ESTIMATED COST*	IDENTIFIED FUNDING	CURRENT GAP
Newell Bridge	\$15.5 M	\$9 M	\$6.5 M
Channel Widening	\$16.06 M****	\$16.06 M	\$ - 0 -
Top-of-Bank	\$15 M	\$4.5 M	\$10.5 M
Pope-Chaucer Bridge	\$11.3 M	\$11.3 M	\$ - 0 -
Totals	\$57.86 M ***	\$40.86 M	\$17 M**

* Valley Water total contribution for all projects is set at \$25.7M (includes design, construction and all other costs)

** Current gap will likely increase if the design or any other costs increases beyond what is planned

*** Uninflated costs

**** This does not include 30% contingency. This funding is also contingent upon feasibility study resulting in a finding of federal Interest. Feasibility study will be complete in about 9 months.

A topographic map of the San Francisco area, showing various watersheds and infrastructure. The map includes labels for 'SAN FRANCISCO CREEK WATERSHED BOUNDARY', 'Alhambra', 'East Palo Alto', 'Mountain View', 'Los Francisco Creek subwatershed', 'Corte Madera Creek subwatershed', 'Bear Creek subwatershed', 'Serra Marina', 'Park', 'Alhambra', 'East Palo Alto', 'Mountain View', 'Los Francisco Creek subwatershed', and 'Corte Madera Creek subwatershed'. There are also labels for 'Modern engineered channel' and 'Abandoned channel'. A legend in the top left corner indicates 'Artificial bodies of water, modern'. A small inset map in the bottom right corner is titled 'NATURAL LEVELS'.

Costs and Funding Caveats

- The funding gap is not a firm, fixed number.
- Project costs remain uncertain and will change as designs progress and once construction bids are received.
- Some grant funding is ‘in the pipeline’ but not shown here, one grant is uncertain and will be clarified in the coming months, and new grant funding may be obtained.

A topographic map of the San Francisco Quilto Creek Watershed. The map shows various subwatersheds: Bear Creek, San Francisco Quilto Creek, Cortis Mederos Creek, and Los Francisco Creek. It also identifies geographical features like the Bear Gulch Reservoir, San Francisco Quilto Creek Watershed Boundary, and the Portola Valley. A legend in the top left corner indicates 'Artificial bodies of water, modern' with a blue icon. A legend in the bottom right corner is titled 'NATURAL LEVELS'. The map includes labels for 'Modern engineered channel' and 'Abandoned channel'. A legend in the top left corner also includes 'Artificial bodies of water, modern'.

Project Information Link

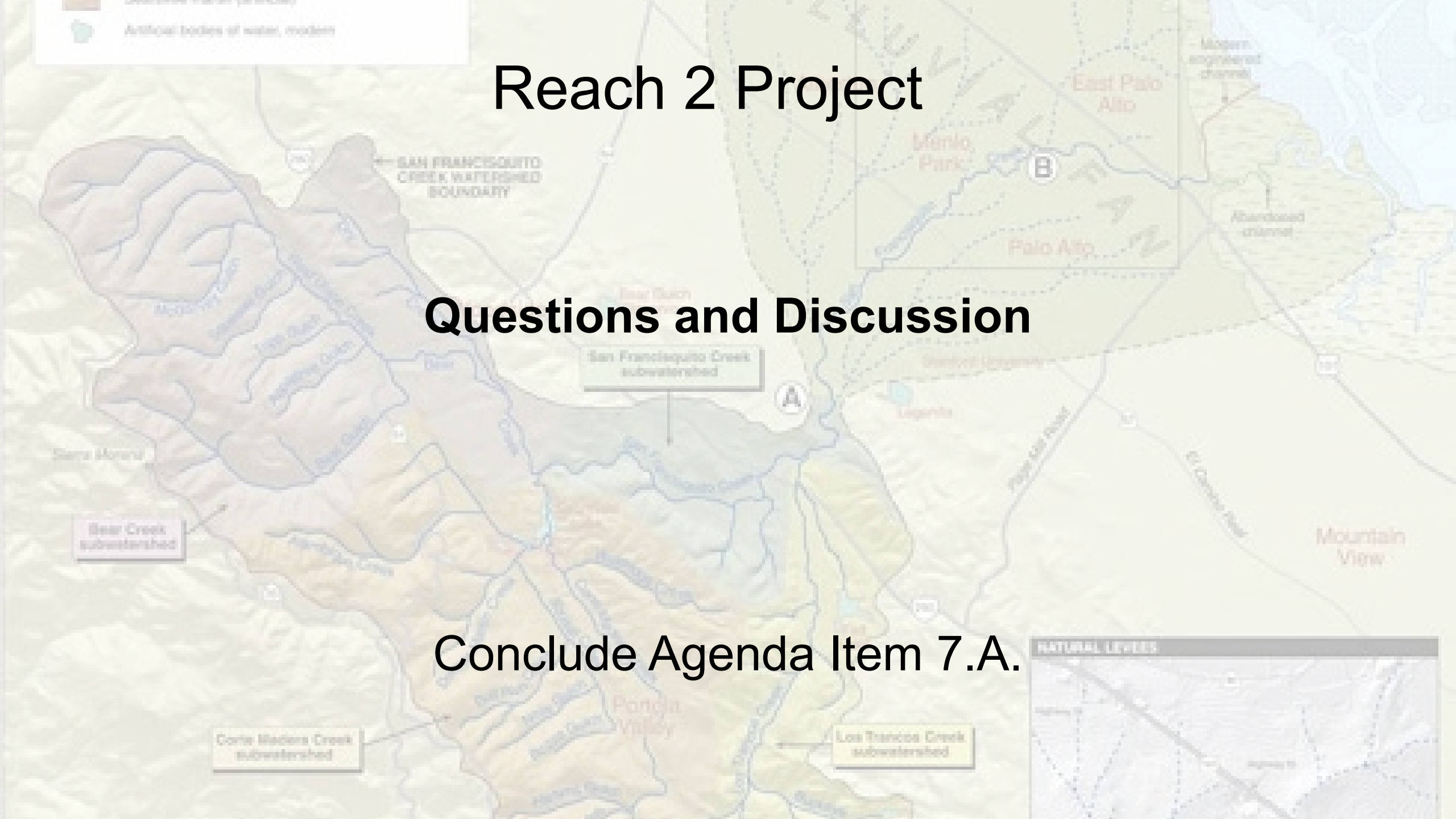
Reach 2 project information can be found on the SFCJPA's website at:

<https://www.sfcjpa.org/reach-2-upstream-project>

Reach 2 Project

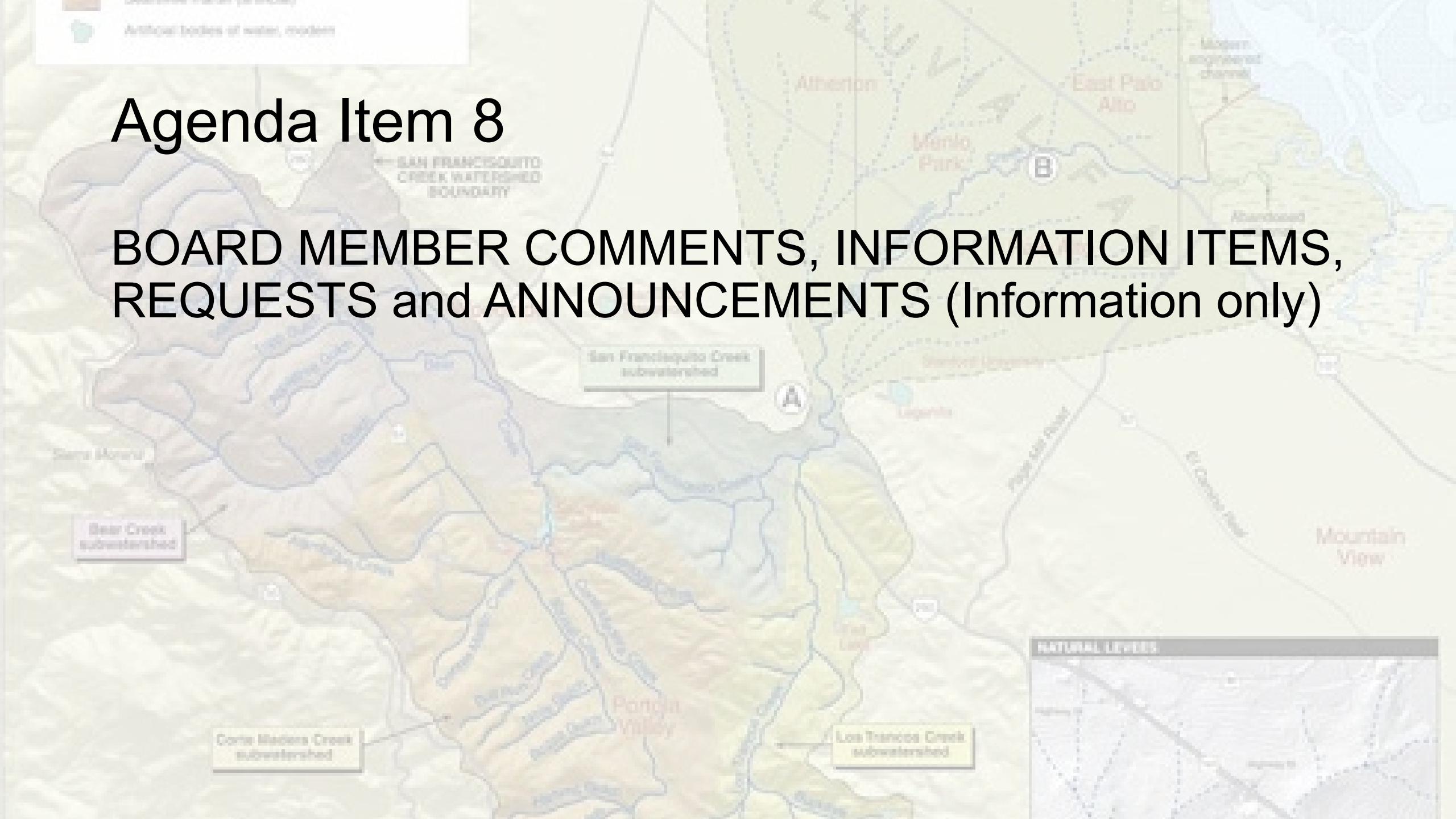
Questions and Discussion

Conclude Agenda Item 7.A.



Agenda Item 8

**BOARD MEMBER COMMENTS, INFORMATION ITEMS,
REQUESTS and ANNOUNCEMENTS (Information only)**



Agenda Item 9

ADJOURNMENT

