



Preliminary Arborist Report

**San Francisquito Creek Multi-benefit Project
Menlo Park, Palo Alto, & East Palo Alto, CA**

**PREPARED FOR:
San Francisquito Creek Joint Powers Authority
615 B Menlo Avenue
Menlo Park, CA 94025**

**PREPARED BY:
HortScience | Bartlett Consulting
325 Ray Street
Pleasanton, CA 94566**

June 15, 2020



**Preliminary Arborist Report
San Francisquito Creek Multi-benefit Project
Menlo Park, Palo Alto, & East Palo Alto, CA**

Table of Contents

	Page
Introduction and Overview	1
Assessment Methods	1
Description of Trees	2
Municipal Protected Tree Designations	6
Suitability for Preservation	7
Recommendations for Preservation	8
Preliminary Tree Preservation Guidelines	9

List of Tables

Table 1. Condition ratings and frequency of occurrence of trees	2
Table 2. Tree suitability for preservation	8

Exhibits

***Tree Assessment Plan
Tree Assessment
Preliminary Tree Disposition***

Preliminary Arborist Report

San Francisquito Creek Joint Powers Authority

Menlo Park, Palo Alto, & East Palo Alto, CA

Introduction and Overview

San Francisquito Creek Joint Powers Authority (SFCJPA) is proposing a multi-benefit project that would widen the channel, construct flood reduction features, as well as enhance the environment and recreational opportunities along the reach of San Francisquito Creek (Creek) from the upstream side of West Bayshore Road to the area immediately upstream of the Pope-Chaucer Bridge. The project spans three municipalities: Menlo Park, Palo Alto, and East Palo Alto.

HortScience | Bartlett Consulting (Divisions of the F.A. Bartlett Tree Expert Company) was retained to prepare the **Arborist Report** as a part of the submissions to the governing municipalities. This report is a preliminary assessment of potential impacts to trees to provide design guidance for tree protection. When plans are finalized, a more comprehensive assessment of impacts to trees and designation of tree protection measures will be prepared.

This report provides the following information:

1. An assessment of each tree's health, structure, suitability for preservation and protected status within and adjacent to the proposed project area.
2. A preliminary evaluation of impacts to trees based on current plans.
3. Preliminary guidelines for tree preservation throughout the planned demolition and construction phases of the project.

Assessment Methods

Trees were assessed in mid-April 2020. Trees within the San Francisquito Creek boundaries (from Laurel Ave. and Hale St. to the 101 freeway) were included in the visual assessment. Boundaries were defined on field maps received from the SFCJPA and were generally delineated by fences marking private property. Off-site trees with canopies extending into the subject site were viewed from standing on the subject property. All trees measuring 4 inches and greater in diameter were included in the assessment, as required by the Cities of Palo Alto and East Palo Alto. The assessment procedure consisted of the following steps:

1. Identifying the tree species.
2. Tagging each tree with an identifying number and recording its location on a map. Off-site trees were numbered but not tagged.
3. Measuring the trunk diameter at 54 inches above grade for trees in Palo Alto and Menlo Park, and at 24 inches in East Palo Alto. For off-site trees, trunk diameter was estimated.
4. Evaluating the health and structural condition from a visual inspection using a scale of 1 – 5:
 - 5** - A healthy, vigorous tree, reasonably free of signs and symptoms of disease, with good structure and form typical of the species.
 - 4** - Tree with slight decline in vigor, small amount of twig dieback, minor structural defects that could be corrected.
 - 3** - Tree with moderate vigor, moderate twig and small branch dieback, thinning of crown, poor leaf color, moderate structural defects that might be mitigated with regular care.
 - 2** - Tree in decline, epicormic growth, extensive dieback of medium to large branches, significant structural defects that cannot be abated.
 - 1** - Tree in severe decline, dieback of scaffold branches and/or trunk; most of foliage from epicormics; extensive structural defects that cannot be abated.
5. Rating the suitability for preservation as “high”, “moderate” or “low”. Suitability for preservation considers the health, age and structural condition of the tree, and its potential to remain an asset to the site for years to come.

- High:** Trees with good health and structural stability that have the potential for longevity at the site.
- Moderate:** Trees with somewhat declining health and/or structural defects than can be abated with treatment. The tree will require more intense management and monitoring and may have shorter life span than those in 'high' category.
- Low:** Trees in poor health or with significant structural defects that cannot be mitigated. Tree is expected to continue to decline, regardless of treatment. The species or individual may have characteristics that are undesirable for landscapes, and generally are unsuited for use areas.

Description of Trees

Fifty-two (52) species comprised the 535 trees evaluated, 12 of which were off-site (Table 1). Most trees growing on the slopes and in the creek-bed were naturally occurring and likely indigenous to the site. Many of the trees assessed along the top of the bank were either planted or naturally seeded. Species native to California included boxelder, California buckeye, California bay, California black walnut, coast live oak, and valley oak. Non-native invasive species included blackwood acacia, blue gum, and olive.

Among all trees, 261 (49%) were in fair condition; 112 (21%) in good condition, 160 (30%) in poor condition, and one tree was dead. Descriptions of each tree can be found in the **Tree Assessment** and approximate locations are shown on the **Tree Assessment Plan** (see Exhibits).

**Table 1: Condition ratings and frequency of occurrence of trees.
San Francisquito Creek Multi-benefit Project
Menlo Park, Palo Alto, & East Palo Alto, CA**

Common Name	Scientific Name	Condition				Total
		Dead (0)	Poor (1-2)	Fair (3)	Good (4-5)	
Bailey acacia	<i>Acacia baileyana</i>	-	26	6	-	32
Blackwood acacia	<i>Acacia melanoxylo</i>	-	5	9	-	14
Bigleaf maple*	<i>Acer macrophyllum</i>	-	1	2	1	4
Boxelder*	<i>Acer negundo</i>	-	2	-	-	2
California buckeye*	<i>Aesculus californica</i>	-	7	21	7	35
Tree of heaven	<i>Ailanthus altissima</i>	-	1	-	-	1
	<i>Allocauarina</i>					
River she-oak	<i>cunninghamiana</i>	-	-	1	-	1
Incense cedar	<i>Calocedrus decurrens</i>	-	-	-	1	1
Blue atlas cedar	<i>Cedrus atlantica</i> 'Glauca'	-	1	-	-	1
Deodar cedar	<i>Cedrus deodara</i>	-	-	2	1	3
Camphor	<i>Cinnamomum camphora</i>	-	1	-	-	1
Red flowering gum	<i>Corymbia ficifolia</i>	-	-	1	-	1
Loquat	<i>Eriobotrya japonica</i>	-	-	2	1	3
Blue gum	<i>Eucalyptus globulus</i>	-	8	21	11	40
White ash	<i>Fraxinus americana</i>	-	7	5	-	12
Toyon*	<i>Heteromeles arbutifolia</i>	-	1	-	-	1
English holly	<i>Ilex aquifolium</i>	-	-	1	-	1
California black walnut*	<i>Juglans hindsii</i>	-	16	6	-	22

Common Name	Scientific Name	Condition				Total
		Dead (0)	Poor (1-2)	Fair (3)	Good (4-5)	
Japanese privet	<i>Ligustrum japonicum</i>	-	1	9	-	10
Glossy privet	<i>Ligustrum lucidum</i>	-	1	-	-	1
Southern magnolia	<i>Magnolia grandiflora</i>	-	-	-	4	4
Saucer magnolia	<i>Magnolia x soulangiana</i>	-	-	1	-	1
Myoporum	<i>Myoporum laetum</i>	-	3	-	-	3
Unknown	Nothing Found	1	-	-	-	1
Olive	<i>Olea europaea</i>	-	-	1	1	2
Canary Island date palm	<i>Phoenix canariensis</i>	-	-	-	2	2
Italian stone pine	<i>Pinus pinea</i>	-	-	1	-	1
Monterey pine	<i>Pinus radiata</i>	-	1	4	-	5
Tobira	<i>Pittosporum tobira</i>	-	-	-	1	1
Victorian box	<i>Pittosporus undulatum</i>	-	3	2	1	6
London plane	<i>Platanus x hispanica</i>	-	-	1	-	1
Fremont cottonwood*	<i>Populus fremontii</i>	-	6	6	1	13
Carolina cherry laurel	<i>Prunus caroliniana</i>	-	-	3	-	3
Purpleleaf plum	<i>Prunus cerasifera</i>	-	1	-	-	1
Plum	<i>Prunus domestica</i>	-	-	2	-	2
Portugal laurel	<i>Prunus lusitanica</i>	-	2	-	-	2
Coast live oak*	<i>Quercus agrifolia</i>	-	30	117	71	218
Valley oak*	<i>Quercus lobata</i>	-	-	-	1	1
Southern live oak	<i>Quercus virginiana</i>	-	1	-	-	1
Italian buckthorn	<i>Rhamnus alaternus</i>	-	1	-	-	1
Majestic Beauty Indian hawthorn	<i>Rhaphiolepis 'Majestic Beauty'</i>	-	-	1	-	1
Yellow willow	<i>Salix lasiandra</i>	-	13	8	-	21
Arroyo willow*	<i>Salix lasiolepis</i>	-	-	1	-	1
Elderberry*	<i>Sambucus sp.</i>	-	9	6	-	15
California pepper	<i>Schinus molle</i>	-	2	-	-	2
Brazilian pepper	<i>Schinus terebinthifolius</i>	-	1	-	-	1
Coast redwood*	<i>Sequoia sempervirens</i>	-	-	1	1	2
Australian bush cherry	<i>Syzygium paniculatum</i>	-	-	1	-	1
Little leaf linden	<i>Tilia cordata</i>	-	1	-	-	1
Chinese elm	<i>Ulmus parvifolia</i>	-	-	1	2	3
California bay*	<i>Umbellularia californica</i>	-	8	17	6	31
Sawleaf zelkova	<i>Zelkova serrata</i>	-	-	1	-	1
Total		1	160	261	112	535

*Species native to California

Trees were growing along the top of the bank, lining the bank into the Creek, and in the Creek channel. At the toe of the bank adjacent to the active channel, soil had eroded leaving the trees with exposed roots (Photo 1, next page).

By far the most common tree species was coast live oak with almost half the population (218 trees). One hundred seventeen (117) live oaks were in fair condition, 71 were in good condition,



Photo 1. Black acacia #482 had roots exposed by water scouring.

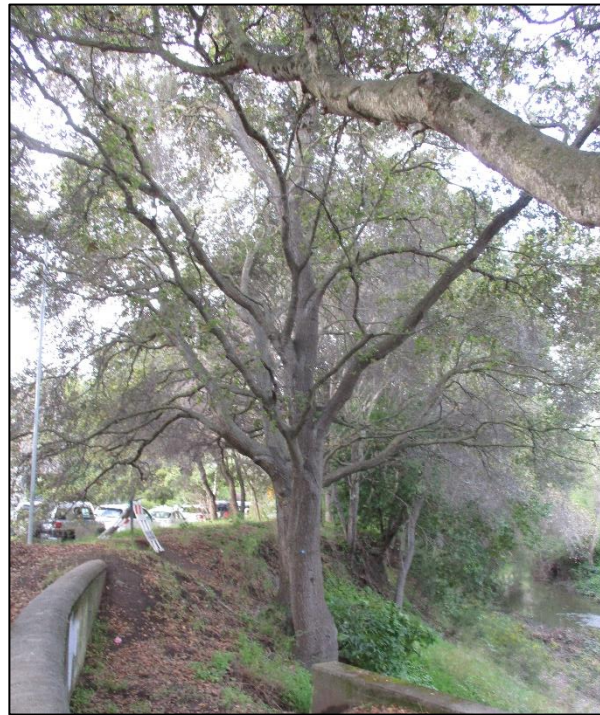


Photo 2. Coast live oak #2 was growing at the top of the slope, close to the southwest corner of the Pope Chaucer Bridge.

and 30 were in poor condition. The live oaks were semi-mature to mature in development with trunk diameters ranging in size from 4 to 56 inches. The average trunk diameter was 15 inches. Coast live oaks were prevalent at the top of the slopes, often lining roadways or planted in park like settings (Photo 2).

Forty (40) blue gums were assessed. The blue gums were some of the largest trees evaluated with trunk diameters ranging from 12 to 84 inches. The blue gums were in relatively good condition for the size and species. Twenty-one (21) trees were in fair condition, 11 trees were in good condition, and eight were in poor condition. The most notable blue gum was #264 which had a trunk diameter of 84 inches and was in excellent condition. Blue gums were the dominate tree in several areas. A large group was growing north of the Newell Street bridge (Photo 3).



Photo 3. The group of blue gums north of the Newell St. bridge was typical of the blue gums assessed, with tall narrow crowns and ivy engulfing the base, trunk and in some cases, crowns.

Photo 4. California buckeye (tree #167) was in good condition with excellent form.

Photo 5 (below). California buckeye #295 had a history of branch failure, decay, and cavities. Despite the condition the tree contributed to the character of the neighborhood.



Thirty-five (35) California buckeyes were assessed. Twenty-one (21) were in good condition, seven were in fair condition, and seven were in poor condition. Thirty-one (31) buckeyes had multiple stems. Trunk diameters ranged from 4 to 37 inches. Two buckeye trees were notable: tree #167 and #295. Tree #167 was growing in the pocket park along Woodland Ave. and #295 was growing on the south west corner of the Newell St bridge (Photos 4 and 5).

Tree #167 had excellent form and structure, although the crown was slightly thin, with a full wide-spreading crown. Tree #295 was riddled with decay throughout the base and trunk. Given the

location, I recommend an advance inspection to evaluate extent of decay and assess structural stability. The form, size, and locations of the tree made it a beloved landmark in the neighborhood.

Thirty-two (32) Bailey acacias were assessed. Twenty-six (26) trees were in poor condition and six were in fair condition. The Bailey acacia ranged in trunk diameter from 5 to 12 inches.

Thirty-one (31) California bay trees were evaluated. Seventeen (17) were in fair condition, eight were in poor condition and six were in good condition. The bays ranged in size from 5 to 42 inches in diameter. The most notable was California bay #13 growing at the northwestern corner of the Pope Chaucer bridge. The bay had five trunks ranging in size from 4 to 36 inches in diameter. The tree was in fair condition with decay in the basal cavity.

Twenty-two (22) California black walnuts were evaluated. Sixteen (16) were in poor condition and six were in fair condition. Twelve (12) had single trunks and 10 had multiple trunks ranging in diameter from 5 to 36 inches. The black walnuts had a history of branch failure, poor structure, extensive dieback, leans, bows, and cavities with decay.

Twenty-one (21) yellow willows were evaluated. Thirteen (13) were in poor condition and eight were in fair condition. The yellow willows were small trees with diameters ranging from 5 to 20 inches in diameter. The willows were growing in the creek, as such, their forms had been altered by the water flow, with leans, undermined roots, failures, and partial failures.

The remaining 45 species were represented by fewer than 15 trees. The most notable of which were:

- Valley oak #406 which was in good condition with trunk diameters of 18 and 15 inches and a nice crown (Photo 6).
- Four Southern magnolia street trees were growing in the area of the Pope Chaucer bridge. All four were in good condition with full healthy crowns.
- Fremont cottonwood # 442 was a large specimen for the species with 36, 24, 20-inch diameters. The cottonwood was in fair condition with multiple attachments arising from the base; the 20-inch leaned heavy over creek growing at the bottom of the creek.



Photo 6. Valley oak #406 was growing at the top of the slope and was in good condition.

Municipal Protected Tree Designations

Designations for what trees are protected based on their size and species, varies by municipality. Terminology for protected trees also varies, e.g. heritage tree and regulated tree. All tree protection designations according to the municipal designation in which they are growing are provided in the **Tree Assessment** (see *Exhibits*).

City of Menlo Park

The City of Menlo Park Municipal Code Ch. 13.24 protects Heritage trees, which are defined as:

1. Any tree having a trunk diameter of 15 inches or more.
2. Any oak tree native to California with a trunk diameter of 10 inches or more.
3. Any tree or group of trees specifically designated by the City Council for protection because of its historical significance, special character or community benefit.
4. Any tree with more than one trunk measured at the highest point where the trunks divide, with a diameter of 15 inches or more, with the exception of trees that are under 12 feet in height.

Of the 80 trees assessed in Menlo Park, 36 trees were protected. Heritage trees are required to be preserved and maintained in a state of good health. A permit from the City is required to remove a Heritage tree or prune more than one fourth of the canopy and/or roots.

City of Palo Alto

The Palo Alto Municipal Code (8.10.020) defines *regulated trees* in three categories:

- **Category 1 – Protected trees**

Protected trees are, “any tree of the species *Quercus agrifolia* (coast live oak) or *Quercus lobata* (valley oak) which is 11.5 inches in diameter (36 inches in circumference) or more when measured 54 inches above natural grade; and any

redwood tree (*Sequoia sempervirens*) that is 18 inches in diameter (57 inches in circumference) or more when measured 54 inches above natural grade.”

Seventy (70) trees met these criteria.

- **Category 2 – Street trees**

Street trees are all trees growing within street right-of-way. A permit from the Public Works Department is required prior to any work on or within the dripline of any tree growing within the street right-of-way (publicly owned).

No street trees were included in the assessment.

- **Category 3 – Designated trees**

Designated trees are trees associated with development project that are specifically designated by City to be saved and protected.

Designated trees have yet to be identified for this project.

In summary of the 231 trees assessed in Palo Alto 70 are Protected

City of East Palo Alto Tree Protection Requirements

The City of East Palo Alto Municipal Code (Article 4. Section 6420) defines a Protected tree as having a circumference of 40 inches (13-inch diameter) measured at 24 inches above the ground. All street trees are considered Protected. A permit is required for any planned removal of a protected tree.

Of the 211 trees assessed in East Palo Alto 110 trees are Protected.

Suitability for Preservation

When evaluating tree health, a factor that is considered is the trees' suitability for preservation. Our goal is to identify trees that have the potential for long-term health, structural stability and longevity. In this case, the trees assessed were growing in areas far from human intervention. Many trees would likely not have the potential to fail into an area where the tree would damage people or property. However, where property would not be damaged by failure, I recommend allowing the normal life cycles of decline, structural failure and death should be allowed to continue. Where development will occur, or where persons or property could be damaged now or in the future, we must consider the structural stability as well as the trees potential to grow and thrive in a new environment.

Evaluation of suitability for preservation considers several factors:

- **Structural integrity**

Trees with significant amounts of wood decay and other structural defects that cannot be corrected are likely to fail. Such trees should not be preserved in areas where damage to people or property is likely. Coast live oak #38 had dieback and boring insect activity in the upper crown and was planted adjacent to the street right-of-way. If removal is not possible, pruning to reduce laterals over the street should be considered.

- **Species response**

There is a wide variation in the response of individual species to construction impacts and changes in the environment. Coast live oak have good tolerance to construction impacts. However, California buckeye, bailey acacia, California bay, California black walnut, and yellow willow are less tolerant of construction impacts.

▪ **Invasiveness**

Species which spread across a site and displace desired vegetation are not always appropriate for retention. This is particularly true when indigenous species are displaced. The California Invasive Plant Inventory Database (<http://www.cal-ipc.org/paf/>) lists species identified as being invasive. Menlo Park, Palo Alto, & East Palo Alto is part of the Central West Floristic Province. Glossy privet, blackwood acacia, blue gum, and olive are listed as having limited invasiveness potential.

Each tree was rated for suitability for preservation based upon its age, health, structural condition and ability to safely coexist within a development environment (Table 2). We consider trees with high suitability for preservation to be the best candidates for preservation. We do not recommend retention of trees with low suitability for preservation in areas where people or property will be present. Retention of trees with moderate suitability for preservation depends upon the intensity of proposed site changes.

**Table 2: Tree suitability for preservation
San Francisquito Creek Joint Powers Authority
Menlo Park, Palo Alto, & East Palo Alto, CA**

High	Trees in this category had good health and structural stability that have the potential for longevity at the site. Fifty-one (51) trees had high suitability for preservation.
Moderate	Trees in this category have fair health and/or structural defects that may be abated with treatment. Trees in this category require more intense management and monitoring, and may have shorter life-spans than those in the “high” category. One hundred eight-nine (189) had moderate suitability for preservation.
Low	Trees in this category are in poor health or have significant defects in structure that cannot be abated with treatment. These trees can be expected to decline regardless of management. The species or individual tree may possess either characteristics that are undesirable in landscape settings or be unsuited for use areas. Two hundred ninety-three (293) had low suitability for preservation.

Recommendations for Preservation

Appropriate tree retention is a practical match between the location and intensity of construction activities with the quality and health of trees. The tree assessment was the reference point for tree condition and quality. Construction plans had not yet been developed for this project. When construction plans are prepared, a comprehensive assessment of impacts to trees and designation of tree protection measures can be prepared.

Preliminary planning documents and plans lacked crucial information to correctly identify disposition, like accurate trunk locations of all trees assessed, access paths, details on the work will be completed. I used the 95% plan set prepared by the Santa Clara Valley Water District dated May 25, 2020 to assess preliminary impacts. Based on these plans 180 trees appear to be within an area that will require removal. Two-hundred seventy-two (272) appear to be in areas

that will remain undisturbed. Eighty-three (83) trees do not have a disposition because the plans did not articulate what work would be taking place in these areas.

While developing plans I recommend acquiring a survey with accurate trunk locations, developing project level plans for the project that specify excavation requirements, soil retention requirements, and exact location of work to be completed.

Additionally, as the project proceeds, attention could be given to preservation trees near the edges of the rights-of-way that could provide screening, wildlife habitat, and preserve value to the adjacent neighborhoods. Trees that I suggest preserving trees in good condition that had high or moderate suitability for preservation. I suggest preserving native tree where possible particularly coast live oaks, California buckeyes #167, 409, and 497 and valley oak #406. Preservation of these trees would benefit the project.

Tree preservation is predicted on adherences to the **Preliminary Tree Preservation Guidelines** below. The preliminary disposition of trees is shown in the **Preliminary Tree Disposition Table** (see Exhibits).

Tree Preservation Guidelines

The goal of tree preservation is not merely tree survival during development but maintenance of tree health and beauty for many years. Trees retained on sites that are either subject to extensive injury during construction or are inadequately maintained become a liability rather than an asset. The response of individual trees will depend on the amount of excavation and grading, the care with which demolition is undertaken, and the construction methods. Coordinating any construction activity inside the **TREE PROTECTION ZONE** can minimize these impacts.

The following recommendations will help reduce impacts to off-site trees from development and maintain and improve their health and vitality through the clearing, grading and construction phases.

Design recommendations

1. Plan for tree preservation by designing adequate space around trees to be preserved. This area is called the **TREE PROTECTION ZONE**: No grading, excavation, construction or storage of materials should occur within that zone. Route underground services including utilities, sub-drains, water or sewer around the **TREE PROTECTION ZONE**. Work along the slopes may cut into the driplines of trees. The uphill roots tend to be the stabilizing roots are therefore more important to work to preserve than the downhill roots.
2. Plot accurate locations of all trees to be preserved on all project plans. Identify the **TREE PROTECTION ZONE** for each tree on the plans.
3. Consider the vertical clearance requirements near trees during design. Avoid designs that would require pruning more than 20% of a tree's canopy.
4. All plans affecting trees shall be reviewed by the Consulting Arborist with regard to tree impacts. These include, but are not limited to, demolition plans, grading plans, drainage plans, utility plans, and landscape and irrigation plans.
5. Any changes to the plans affecting the trees should be reviewed by the Project Arborist with regard to tree impacts.
6. Tree Preservation Guidelines prepared by the Project Arborist, which include specifications for tree protection during demolition and construction, should be included on all plans.

7. Any herbicides placed under paving materials must be safe for use around trees and labeled for that use.
8. Do not lime the subsoil within 50 feet of any tree. Lime is toxic to tree roots.

Pre-demolition and pre-construction treatments and recommendations

1. The demolition and construction superintendents shall meet with the Project Arborist before beginning work to review all work procedures, access routes, storage areas, and tree protection measures.
2. Where demolition must occur close to trees, such as removing curb and pavement, install temporary trunk protection devices such as winding silt sock wattle or wood planks around trunks or stacking hay bales around tree trunks to a height of approximately 5'. Any low branches that are within the work zone should also be protected. Remove trunk protection after demolition is completed and install protective fence at the limits of the tree protection zone. **Do not retain wattling around tree trunks for more than 2-3 weeks to avoid damaging trunks from excess moisture.**
3. Trees may require pruning to provide construction clearance. All pruning shall be done by a State of California Licensed Tree Contractor (C61/D49). All pruning shall be done by Certified Arborist or Certified Tree Worker in accordance with the Best Management Practices for Pruning (International Society of Arboriculture, 2002) and adhere to the most recent editions of the American National Standard for Tree Care Operations (Z133.1) and Pruning (A300).
4. All tree work shall comply with the Migratory Bird Treaty Act as well as California Fish and Wildlife code 3503-3513 to not disturb nesting birds. To the extent feasible tree pruning and removal should be scheduled outside of the breeding season. Breeding bird surveys should be conducted prior to tree work. Qualified biologists should be involved in establishing work buffers for active nests.

Recommendations for tree protection during construction

1. Any approved grading, construction, demolition or other work within the **TREE PROTECTION ZONE** should be monitored by the Project Arborist.
2. All contractors shall conduct operations in a manner that will prevent damage to trees to be preserved.
3. Tree protection devices are to remain until all site work has been completed within the work area. Fences or other protection devices may not be relocated or removed without permission of the Project Arborist.
4. Construction trailers, traffic and storage areas must remain outside **TREE PROTECTION ZONE** at all times.
5. All grading within the dripline of trees shall be done using the smallest equipment possible. The equipment shall operate perpendicular to the tree and operate from outside the **TREE PROTECTION ZONE**. Any modifications must be approved and monitored by the Project Arborist.
6. If injury should occur to any tree during construction, it should be evaluated as soon as possible by the Project Arborist so that appropriate treatments can be applied.
7. No excess soil, chemicals, debris, equipment or other materials shall be dumped or stored within the **TREE PROTECTION ZONE**.

8. Any additional tree pruning needed for clearance during construction must be performed by a Certified Arborist and not by construction personnel.

Maintenance of impacted trees

Preserved trees will experience a physical environment different from that pre-development. As a result, tree health and structural stability should be monitored. Occasional pruning, fertilization, mulch, pest management, replanting and irrigation may be required. In addition, provisions for monitoring both tree health and structural stability following construction must be made a priority. Our procedures included assessing trees for observable defects in structure. This is not to say that trees without significant defects will not fail. Failure of apparently defect-free trees does occur, especially during storm events. Wind forces, for example, can exceed the strength of defect-free wood causing branches and trunks to break. Wind forces coupled with rain can saturate soils, reducing their ability to hold roots, and blow over defect-free trees. Although we cannot predict all failures, identifying those trees with observable defects is a critical component of enhancing public safety.

Furthermore, trees change over time. Our inspections represent the condition of the tree at the time of inspection. As trees age, the likelihood of failure of branches or entire trees increases. Annual tree inspections are recommended to identify changes to tree health and structure. In addition, trees should be inspected after storms of unusual severity to evaluate damage and structural changes. Initiating these inspections is the responsibility of the client and/or tree owner.

If you have any questions regarding my observations or recommendations, please contact me.

HortScience | Bartlett Consulting



Darya Barar, Consulting Urban Forester & H|BC Manager
Registered Consulting Arborist #693
ISA Certified Arborist No. WE-6757A
ISA Tree Risk Assessment Qualified



Exhibits

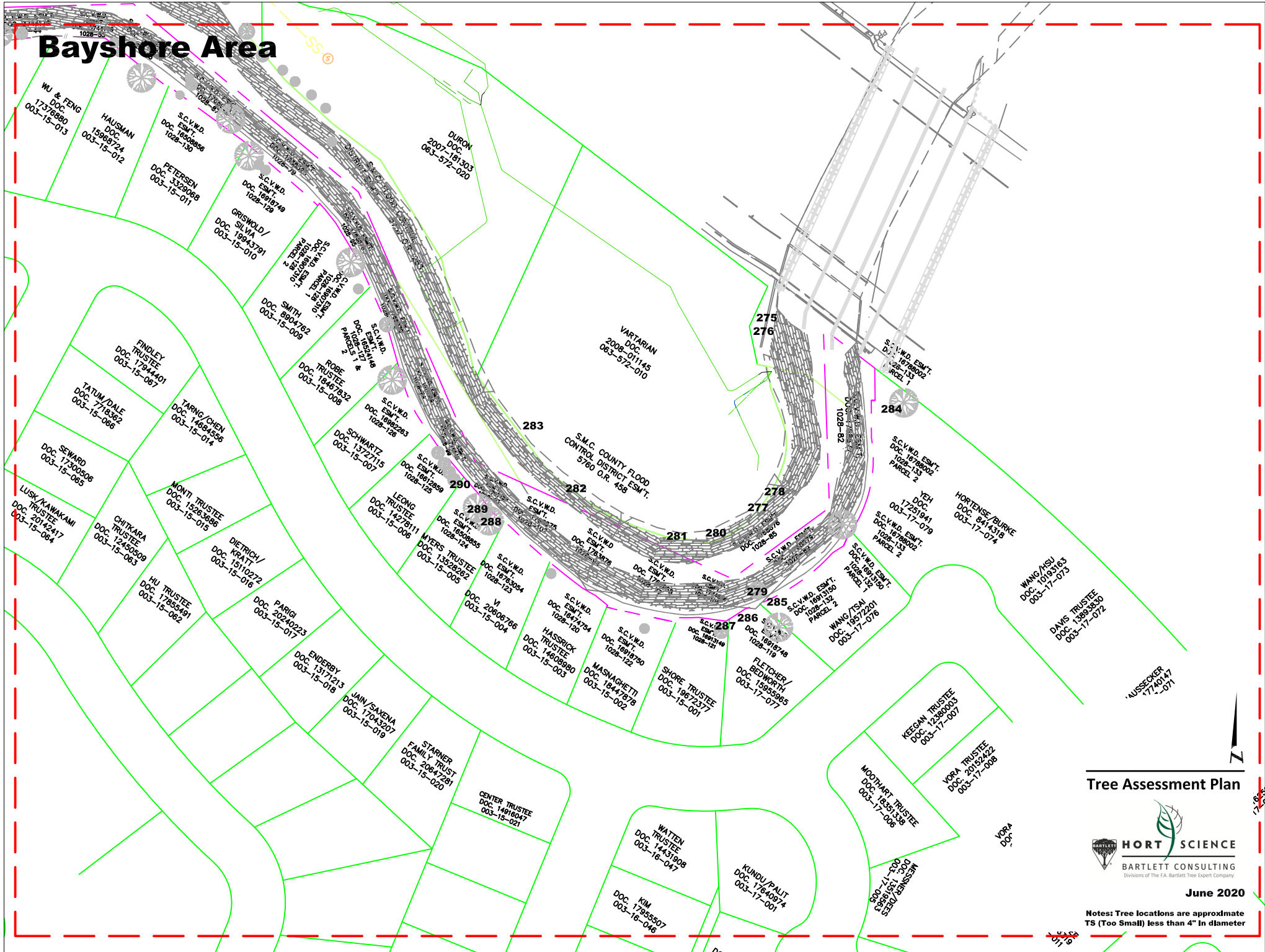
Tree Assessment Plan

Tree Assessment

Preliminary Tree Disposition Table



Bayshore Area



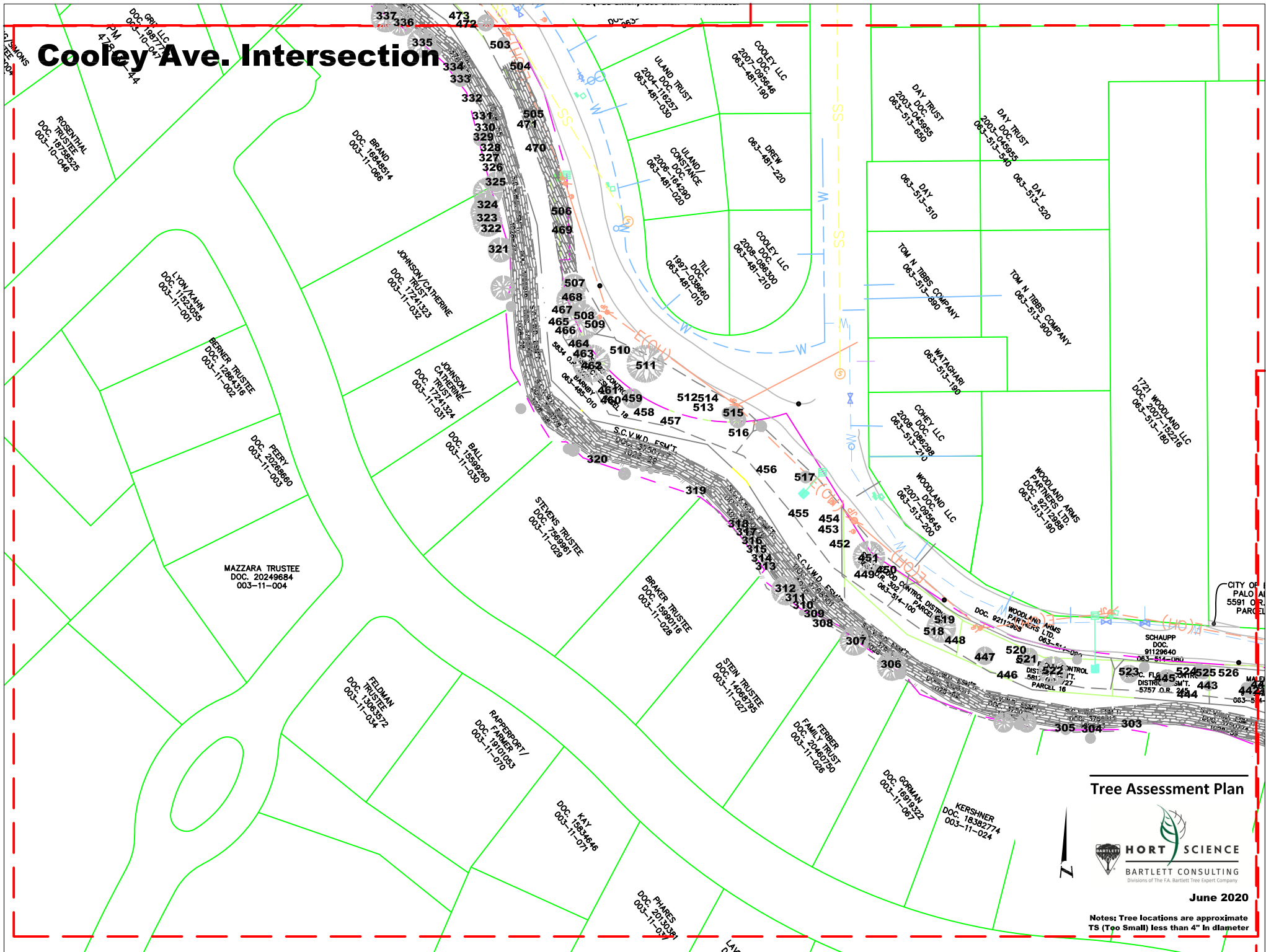
Tree Assessment Plan



June 2020

Notes: Tree locations are approximate
TS (Too Small) less than 4" in diameter

Coolley Ave. Intersection



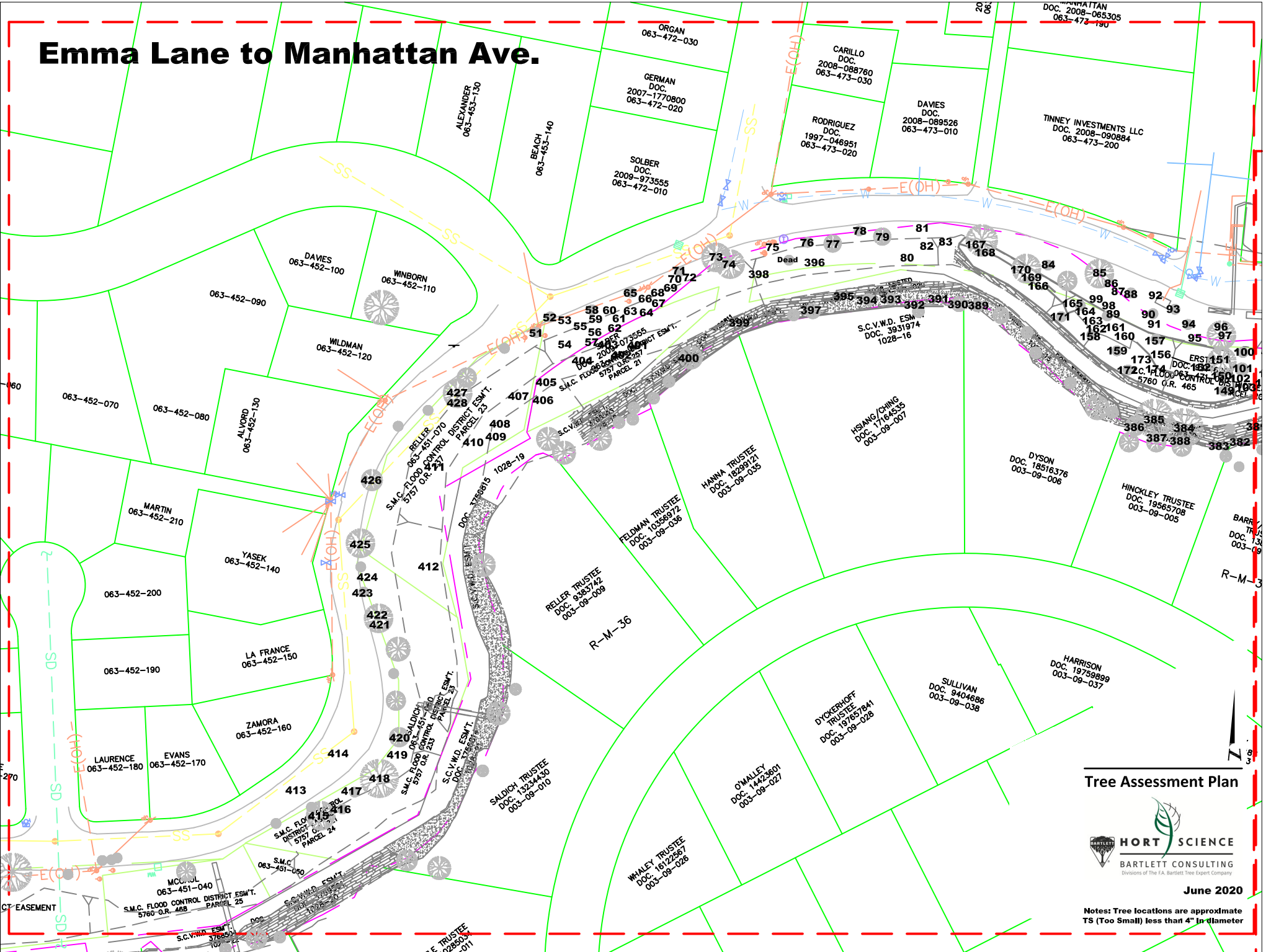
Tree Assessment Plan



June 2020

Notes: Tree locations are approximate TS (Too Small) less than 4" in diameter

Emma Lane to Manhattan Ave.



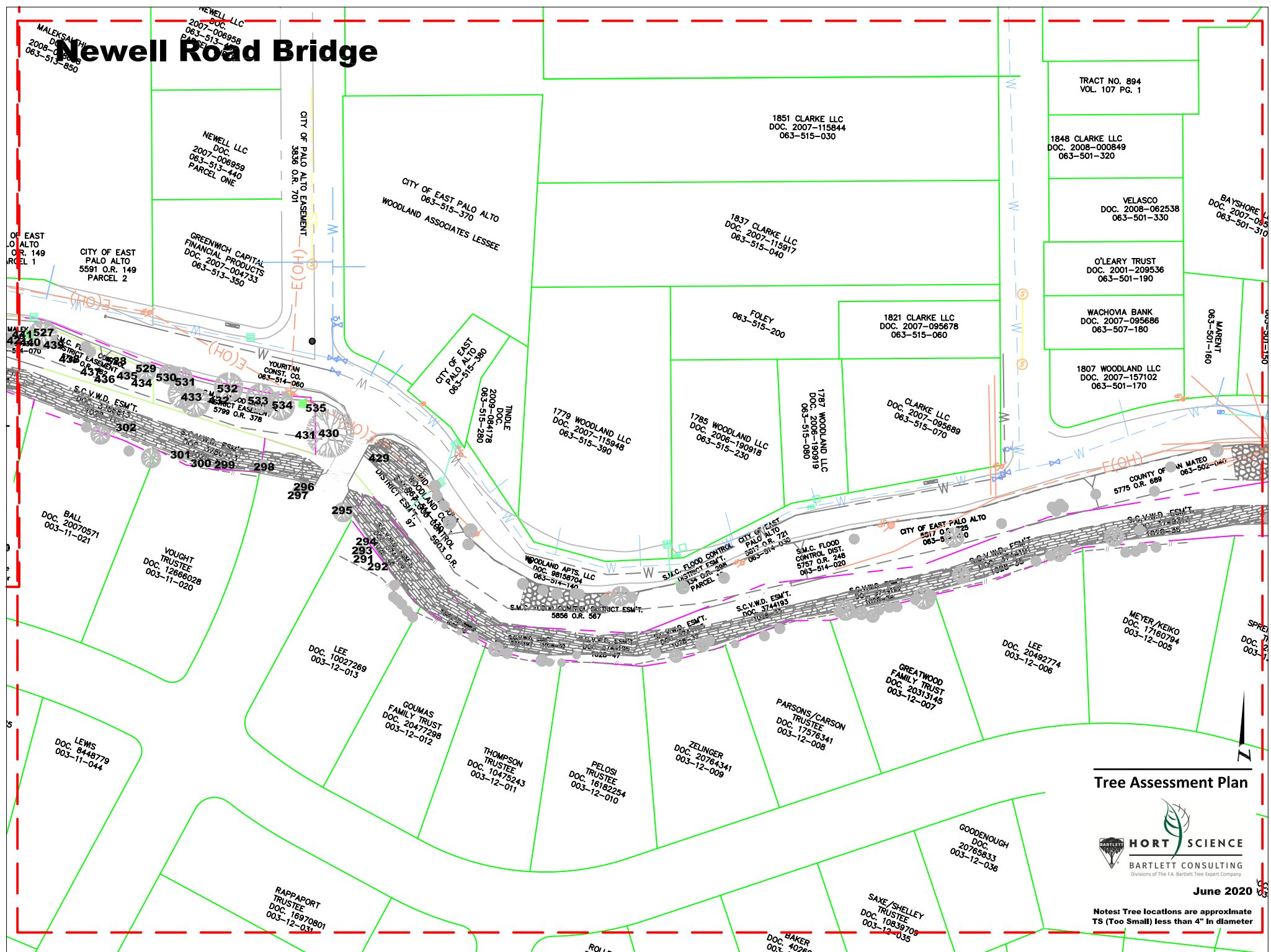
Tree Assessment Plan



June 2020

Notes: Tree locations are approximate
TS (Too Small) less than 4" in diameter

Newell Road Bridge



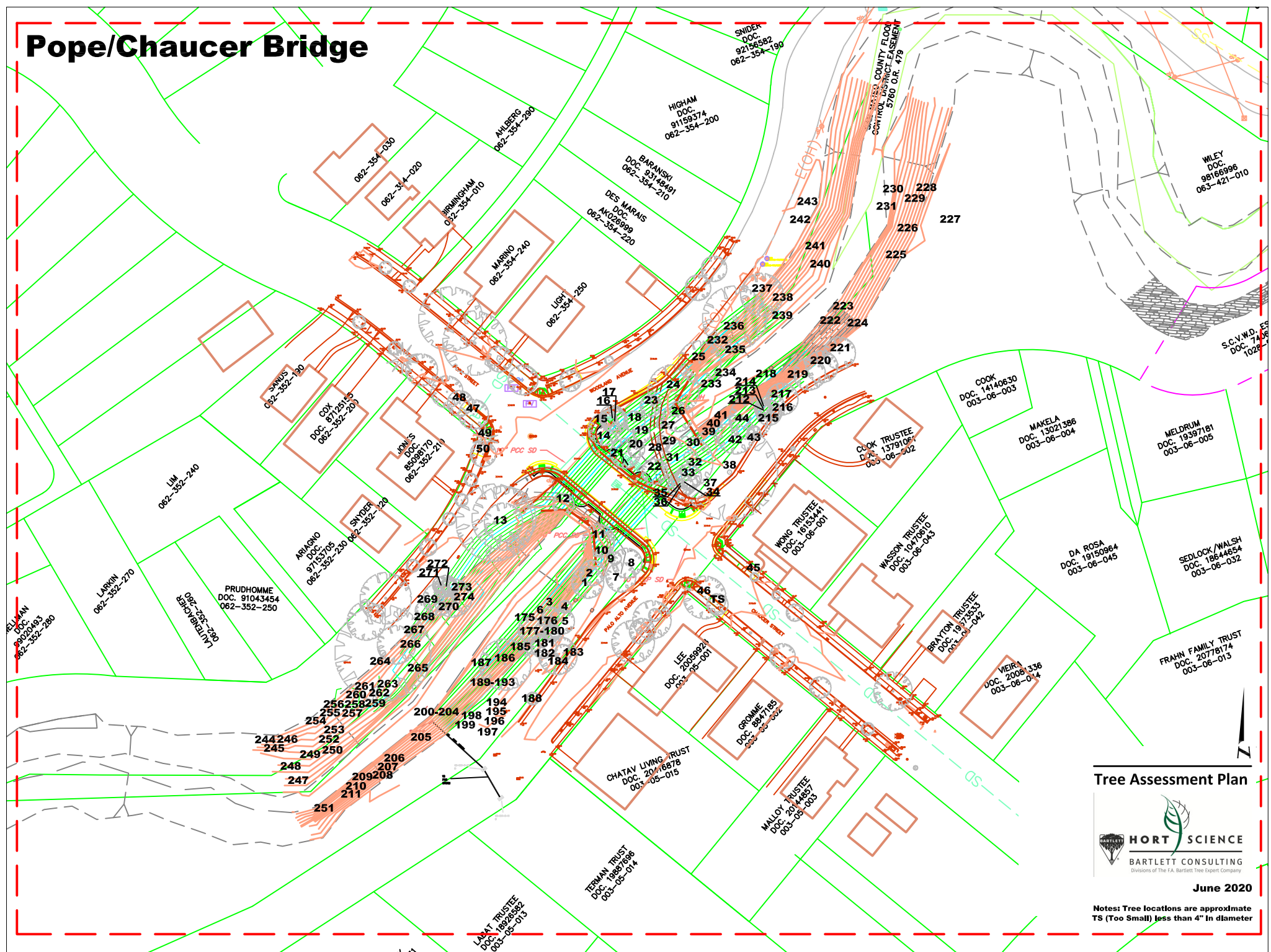
Tree Assessment Plan



June 2020

Notes: Tree locations are approximate
TS (Too Small) less than 4" in diameter

Pope/Chaucer Bridge



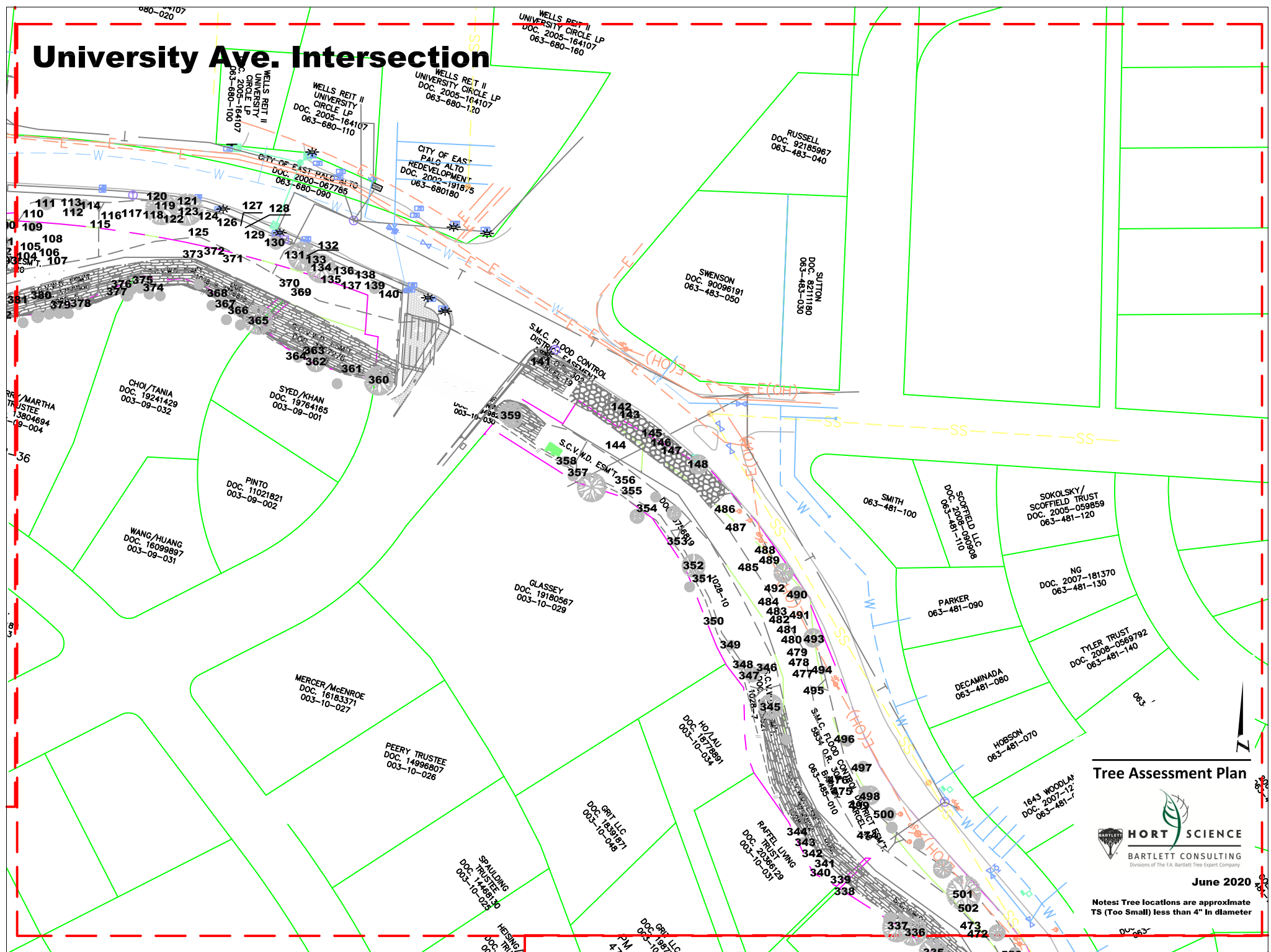
Tree Assessment Plan



June 2020

Notes: Tree locations are approximate
TS (Too Small) less than 4" in diameter

University Ave. Intersection



Tree Assessment Plan



June 2020

Notes: Tree locations are approximate
TS (Too Small) less than 4" in diameter

Tree Assessment

San Francisquito Creek Multi-Benefit Project
Menlo Park, Palo Alto, & East Palo Alto, CA
April 2020



Tree No.	Species	Trunk Diameter (in.)	Protected Tree?	Condition 1=poor 5=excellent	Suitability for Preservation	Comments
1	Coast live oak	19	Yes	4	Moderate	Suppressed south; multiple trunks arise from 10'; healthy growth.
2	Coast live oak	20	Yes	4	Moderate	Straight upright trunk; sweep at base; full healthy crown.
3	Coast live oak	10	No	2	Low	Sinuous upright trunk; thin suppressed crown.
4	Coast live oak	10,5	Yes	3	Low	Multiple trunks arise from base; thin suppressed crown.
5	Coast live oak	19,10	Yes	4	Moderate	One sided south; thin crown; suppressed on north side; green growth at top.
6	California bay	8	No	3	Low	Growing out of the side of a steep slope; healthy growth; suppressed.
7	Coast live oak	17	Yes	4	Moderate	Multiple trunks arise from 5'; one sided suppressed; good growth at top; including bark.
8	Coast live oak	14,10	Yes	4	Moderate	Codominant trunks arise from base; included bark; health suppressed crown.
9	Majestic Beauty Indian hawthorn	5;4;4	No	3	Low	Multiple trunks arise from base; trunk and base engulfed in ivy; suppressed; dieback.
10	Coast live oak	13	Yes	4	Moderate	Buried root crown; suppressed; growing as a pair with tree #1; one sided south.
11	Coast live oak	22	Yes	4	Moderate	Buried root crown; suppressed; growing as a pair with tree #9; one sided north.
12	White ash	13,9,4	No	1	Low	Codominant stems arise from base; little live foliage.
13	California bay	36,34,22, 15,4	Yes	3	Moderate	Multiple trunks arise from base; extensive cavities with decay at base; full healthy crown.
14	Coast live oak	10	Yes	5	High	Multiple trunks arise from 5'; healthy full crown; under power lines.
15	Coast live oak	11	Yes	4	Moderate	Healthy full crown; under power lines; suppressed west.
16	Coast live oak	11,10,8	Yes	3	Moderate	Multiple trunks arise from base; crossing trunks fused in places; healthy full crown; under power lines; suppressed west.
17	Coast live oak	9,5,5	Yes	4	Moderate	Healthy full crown; under power lines; suppressed.

Tree Assessment

San Francisquito Creek Multi-Benefit Project
Menlo Park, Palo Alto, & East Palo Alto, CA
April 2020



Tree No.	Species	Trunk Diameter (in.)	Protected Tree?	Condition 1=poor 5=excellent	Suitability for Preservation	Comments
18	Coast live oak	11	Yes	5	High	Full healthy crown; good form and structure; included bark in attachment.
19	Coast live oak	9	Yes	4	Moderate	Full healthy crown; good form and structure; two foot cavity almost completely healed; buried root crown.
20	Coast live oak	7	Yes	3	Low	Suppressed; buried root crown; live foliage only at top.
21	Coast live oak	12,12,9	Yes	3	Low	Multiple trunks arise from base; suppressed; buried root crown; live foliage only at top; boring activity.
22	Coast live oak	11	No	4	Moderate	Suppressed; health crown; boring activity; wounds not healing well.
23	Coast live oak	12	Yes	3	Low	Codominant trunks arise from 4'; included bark in attachment; heavily suppressed; under power lines.
24	Coast live oak	21,17,17	Yes	5	High	Multiple trunks arise from 3'; full healthy crown; spreading crown.
25	California bay	20	Yes	3	Moderate	Growing out of the side of a steep vertical; multiple trunks; some dieback.
26	Coast live oak	14,9	Yes	4	Moderate	Multiple trunks arise from 3'; full healthy crown; spreading crown; suppressed.
27	Coast live oak	14,9	Yes	3	Moderate	Multiple trunks arise from base; suppressed.
28	Coast live oak	7,6,5,4	Yes	3	Low	Multiple trunks arise from base; heavily suppressed; included bark.
29	Coast live oak	5		2	Low	Straight upright trunk; heavily suppressed; growth only at top.
30	Coast live oak	14,10	Yes	4	Moderate	Multiple trunks arise from base; heavily suppressed south; healthy growth only at top; history of branch failure.
31	Coast live oak	8,7	No	3	Low	Codominant trunks arise from 3'; heavily suppressed; growing west.
32	Coast live oak	31	Yes	3	Moderate	Multiple trunks arise from 4'; boring activity; thin crown; history of branch failure; healthy growth only at top; good structure.
33	Coast live oak	12	Yes	3	Moderate	Multiple trunks arise from 5'; one sided; suppressed.

Tree Assessment

San Francisquito Creek Multi-Benefit Project
Menlo Park, Palo Alto, & East Palo Alto, CA
April 2020



Tree No.	Species	Trunk Diameter (in.)	Protected Tree?	Condition 1=poor 5=excellent	Suitability for Preservation	Comments
34	Coast live oak	11,6	Yes	3	Moderate	Codominant trunks arise from base; one sided suppressed.
35	Coast live oak	5	No	2	Low	One sided suppressed; little live foliage.
36	Coast live oak	13	Yes	3	Moderate	Codominant trunks arise from base; one sided suppressed.
37	Coast live oak	5,4	No	3	Low	Codominant trunks arise from 2'; one sided suppressed.
38	Coast live oak	53	Yes	3	Low	Good structure; healthy growth only at top; boring activity; decay; wounds; history of branch failure.
39	Coast live oak	11,7	Yes	3	Low	Straight upright trunk heavily suppressed.
40	Coast live oak	7	No	3	Low	Straight upright trunk heavily suppressed.
41	Coast live oak	16	Yes	3	Low	Codominant trunks; suppressed west; growth only at top.
42	Italian stone pine	26	No	3	Low	Trunk bows west; leaning west; history of branch failure; dieback.
43	Coast live oak	9	No	3	Low	Heavily suppressed south; crown bows south at 9'.
44	Coast live oak	34	Yes	3	Low	Codominant trunks; dieback; suppressed.
45	Saucer magnolia	6	No	3	Low	Sinuuous poor form; healthy growth.
46	Coast live oak	46	Yes	3	Moderate	Street tree 5' wide; replaced sidewalk; growing in power lines; healthy epicormic growth.
47	Southern magnolia	14	Yes	4	Moderate	Street tree; low lateral; straight upright trunk; full healthy crown.
48	Southern magnolia	14	Yes	4	Moderate	Street tree; multiple trunks arise from 7'; included bark; full healthy crown.
49	Southern magnolia	14	Yes	4	Moderate	Street tree; straight upright trunk; minor dieback.
50	Southern magnolia	10	Yes	4	Moderate	Street tree; codominant trunks arise from 6'; straight upright trunk; healthy crown.
51	Coast live oak	28	Yes	4	Moderate	Top of bank; codominant at 5'; leans over bank to south; full crown.
52	Coast live oak	17	Yes	4	Moderate	Codominant at 15'; leans north; under utility lines.
53	Bailey acacia	7,7,5,5,5	No	2	Low	Top of bank; multiple attachments at base; extensive dieback.
54	Bailey acacia	6,5	No	2	Low	No tag; mid-slope; failing at base.

Tree Assessment

San Francisquito Creek Multi-Benefit Project
Menlo Park, Palo Alto, & East Palo Alto, CA
April 2020



Tree No.	Species	Trunk Diameter (in.)	Protected Tree?	Condition 1=poor 5=excellent	Suitability for Preservation	Comments
55	Bailey acacia	5	No	1	Low	All bud dead; failing over utility lines.
56	Bailey acacia	9,7,6	No	2	Low	Top of bank; multiple attachments at base; extensive dieback.
57	Bailey acacia	8	No	3	Low	No tag; mid-slope; leans over creek.
58	Coast live oak	5	No	3	Moderate	Suppressed form.
59	Bailey acacia	6,6,5,5,5, 4,4,4	No	2	Low	Top of bank; multiple attachments at base; failing base.
60	Bailey acacia	10,7	Yes	2	Low	Top of bank; multiple attachments at base; failing base.
61	Bailey acacia	6	No	2	Low	Mid slope; single stem leans south.
62	Bailey acacia	6,5,5	No	2	Low	No tag; mid-slope; leans over creek; multiple attachments at base.
63	Bailey acacia	6,5,5	No	2	Low	Top of bank; multiple attachments at base; failing base.
64	Bailey acacia	9,8,7,6,6	No	2	Low	Mid slope; multiple attachments at base; leans over creek.
65	Coast live oak	18,7	Yes	4	High	Good form and structure; crown grows through utility lines; leaf spot.
66	Bailey acacia	12,12,9,6	Yes	2	Low	Mid slope; multiple attachments at base; leans over creek.
67	Bailey acacia	7	No	2	Low	No tag; mid-slope; leans over creek to horizontal.
68	Bailey acacia	9,9,8,7	No	2	Low	Top of bank; multiple attachments at base; poor structure.
69	Bailey acacia	9,4,4	No	2	Low	Top of bank; multiple attachments at base; poor structure.
70	Bailey acacia	6,5,5,5,4	No	2	Low	Just below top of bank; multiple attachments at base; poor structure.
71	Coast live oak	18	Yes	4	High	Good form and structure; crown grows through utility lines; full crown.
72	Bailey acacia	5,5,5,4,4, 4	No	2	Low	Top of bank; multiple attachments at base; poor structure.
73	Coast live oak	45	Yes	2	Low	Codominant at 5'; thin upper crown with twig dieback; boring damage at base; utility lines grow through crown.
74	Coast live oak	24,21	Yes	3	Moderate	Top of bank; suppressed to southeast; codominant at 3'.

Tree Assessment

San Francisquito Creek Multi-Benefit Project
Menlo Park, Palo Alto, & East Palo Alto, CA
April 2020



Tree No.	Species	Trunk Diameter (in.)	Protected Tree?	Condition 1=poor 5=excellent	Suitability for Preservation	Comments
75	Coast live oak	9,9	Yes	4	High	Codominant at 2'; good young tree.
76	Glossy privet	8,7		2	Low	Codominant at base; extensive dieback.
77	Coast live oak	18,17	Yes	4	High	Codominant at 1'; full crown.
78	Olive	7,7	No	3	Moderate	Suppressed to north; crown reduced over road.
79	Coast live oak	36	Yes	4	High	Top of bank; roots exposed on creek edge; codominant at 10'; full, dense crown.
80	Arroyo willow	10,9,8,6	Yes	3	Low	No tag; base in creek; multiple attachments at base; poor structure.
81	Coast live oak	3,3,3	No	3	Moderate	Codominant at 1'; leaf spot.
82	California bay	5,5,5,4,4, 4,3,3,	No	3	Low	Mid-slope; multiple attachments at base; suppressed to south.
83	Toyon	4,4,2	No	1	Low	Mid-slope; multiple attachments at base; failing out of bank.
84	Portugal laurel	8,3,3,2,2	No	1	Low	Multiple attachments at 1'; extensive dieback.
85	Coast live oak	29,18	Yes	4	High	Engulfed in ivy; codominant at 2'; full, dense crown.
86	Coast live oak	12,12	Yes	4	High	Engulfed in ivy; codominant at 1'; small crown.
87	Coast live oak	18	Yes	2	Low	Failing at base to south; hung up in tree #88.
88	Coast live oak	5,5	No	1	Low	Poor form; codominant at 1'; all but dead.
89	Coast live oak	26	Yes	3	Moderate	Good form and structure; very thin crown.
90	Coast live oak	16	Yes	3	Moderate	Small, high, thin crown.
91	Coast live oak	16	Yes	3	Moderate	Leans north; codominant at 7'.
92	Coast live oak	17	Yes	3	Moderate	Engulfed in ivy; codominant at 6'; thin crown.
93	Coast live oak	6	No	1	Low	Engulfed in ivy; all but dead.
94	Coast live oak	16	Yes	3	Moderate	Engulfed in ivy; codominant at 6'; thin crown; one-sided and leaning to south.
95	Coast live oak	6	No	2	Low	Engulfed in ivy; thin crown; poor structure.
96	Coast live oak	20	Yes	2	Low	Suppressed to north; thin crown.

Tree Assessment

San Francisquito Creek Multi-Benefit Project
Menlo Park, Palo Alto, & East Palo Alto, CA
April 2020



Tree No.	Species	Trunk Diameter (in.)	Protected Tree?	Condition 1=poor 5=excellent	Suitability for Preservation	Comments
97	Coast live oak	20	Yes	3	Moderate	Codominant at 7'; thin crown beginning to separate; up against wall.
98	Coast live oak	9	No	3	Moderate	Engulfed in ivy; small crown.
99	Coast live oak	6,6	No	3	Moderate	Engulfed in ivy; small crown; codominant at base.
100	Coast live oak	8,7,6	No	3	Moderate	Engulfed in ivy; multiple attachments at base; thin crown.
101	Coast live oak	18	Yes	4	High	Multiple attachments at 3'; slightly thin.
102	Coast live oak	6	No	3	Low	Small crown; narrow form.
103	Coast live oak	5	No	2	Low	Small crown; narrow form; very thin crown.
104	Coast live oak	10	No	4	Moderate	Small crown; multiple attachments at 20'.
105	Coast live oak	12,6	Yes	3	Moderate	Small, thin crown; codominant at 15'.
106	Coast live oak	6	No	3	Moderate	Small, thin crown; codominant at 6'.
107	Coast live oak	7	No	4	Moderate	Small crown; narrow form.
108	Coast live oak	12,4	Yes	3	Moderate	Small, thin crown; codominant at 7'..
109	Coast live oak	11	No	3	Moderate	Top of bank; small crown; multiple attachments at 15'.
110	Elderberry	9,7	No	2	Low	Top of bank; dieback; engulfed in ivy.
111	Coast live oak	14,12,10	Yes	4	High	Codominant at 1' and 3'; full, wide spreading crown.
112	Coast live oak	18	Yes	4	Moderate	One-sided to south; slightly thin.
113	Coast live oak	17	Yes	4	High	Good form and structure.
114	Coast live oak	7	No	3	Low	Very suppressed to east; poor form.
115	California buckeye	4,2,2,2	No	3	Low	Mid slope; multiple attachments at base; shrub form.
116	California buckeye	4,4,3	No	3	Low	Weighted down by ivy; multiple attachments at 2'.
117	California buckeye	4,4,4	No	4	Moderate	Codominant at base; shrub like.
118	Coast live oak	13,8	Yes	3	Moderate	Codominant at base; growing out of side of bank; full crown.
119	California bay	22,18,6	Yes	1	Low	Top of bank; 22" stem dead; little live foliage on 18" stem.
120	Bigleaf maple	5	No	2	Low	Central leader dead.

Tree Assessment

San Francisquito Creek Multi-Benefit Project
Menlo Park, Palo Alto, & East Palo Alto, CA
April 2020



Tree No.	Species	Trunk Diameter (in.)	Protected Tree?	Condition 1=poor 5=excellent	Suitability for Preservation	Comments
121	California bay	5,4	No	3	Low	Top of bank; codominant at base; branch dieback.
122	California bay	5	No	1	Low	Top of bank; little live foliage; engulfed in ivy.
123	California bay	18,18	Yes	1	Low	Top dead; engulfed in ivy; codominant at base.
124	Coast live oak	10,8	Yes	3	Low	Mid slope; codominant at 5'.
125	White ash	10,8,6	No	3	Low	Growing in creek bottom; excessive sprouts; bows to east.
126	Bigleaf maple	4	No	4	Moderate	Cage damaging low limbs; otherwise good young tree.
127	Coast live oak	7,7	No	3	Moderate	Top of bank; codominant at 4'.
128	Bigleaf maple	5	No	3	Moderate	Top of bank; multiple attachments at 7'; otherwise good.
129	Coast live oak	4,1	No	4	Moderate	Top of bank; suppressed form.
130	Coast live oak	21	Yes	4	Moderate	Top of bank; multiple attachments at 6'; crown within utility pole.
131	Coast live oak	33	Yes	4	Moderate	Top of bank; multiple attachments at 2'.
132	Coast live oak	20	Yes	3	Moderate	Top of bank; multiple attachments at 3'; suppressed form.
133	California buckeye	17,3,2,2	Yes	3	Moderate	Top of bank; multiple attachments at 3'; small trunk wound; suppressed form.
134	Coast live oak	36	Yes	4	High	Below top of bank; multiple attachments at 3'; full, dense crown.
135	White ash	14,12,12, 10	Yes	3	Moderate	No tag; multiple attachments at base; narrow, high crown.
136	Bigleaf maple	4	No	3	Moderate	Damaged by cage; high, small crown.
137	Coast live oak	6	No	3	Moderate	Top of bank; narrow form.
138	Coast live oak	7	No	3	Low	Top of bank; narrow form; suppressed.
139	Coast live oak	20	Yes	3	Moderate	Top of bank; heavy lean to north; full, crown dense crown.
140	Coast live oak	18,8	Yes	3	Moderate	Top of bank; heavy lean to south; full, crown dense crown; codominant at base.
141	Coast live oak	5	No	3	Moderate	At guard rail; small crown.
142	Coast live oak	11,11,10	Yes	4	High	Top of bank; full, crown dense crown; multiple attachments at 2'.

Tree Assessment

San Francisquito Creek Multi-Benefit Project
Menlo Park, Palo Alto, & East Palo Alto, CA
April 2020



Tree No.	Species	Trunk Diameter (in.)	Protected Tree?	Condition 1=poor 5=excellent	Suitability for Preservation	Comments
143	Coast live oak	7,7,6	No	3	Moderate	Top of bank; one-sided and suppressed to east; codominant at 1' with included bark.
144	White ash	10,6,6	No	1	Low	In creek bed; failing at base.
145	Elderberry	15,15,10	Yes	3	Moderate	Below top of bank; multiple attachments at 1'; poor structure.
146	California buckeye	6,5,4,4,4, 2	No	4	Moderate	Top of bank; multiple attachments at base; full crown.
147	Coast live oak	7,7	No	3	Moderate	Codominant at base.
148	Coast live oak	28	Yes	5	High	Top of bank; full, dense crown; excellent form and structure.
149	Loquat	4,2	No	3	Low	Codominant at base; suppressed.
150	Japanese privet	8,8,8	No	2	Low	Multiple attachments at base; thin upper crown with dieback.
151	Sawleaf zelkova	11	No	3	Moderate	Grows at wall; good form and structure; engulfed in ivy.
152	Brazilian pepper	7,6,6	No	2	Low	Multiple attachments at base; suppressed to north; poor form.
153	Japanese privet	9,4	No	3	Low	Codominant at base; suppressed.
154	Japanese privet	7	No	3	Low	One-sided to west; thin crown.
155	Japanese privet	4,4,4	No	3	Low	Multiple attachments at base; thin crown.
156	Olive	17	No	4	Moderate	1' from wall; thin crown; shaded; otherwise good form.
157	Coast live oak	30	Yes	4	High	1' from wall; excellent form and structure; slightly thin.
158	Coast live oak	21	Yes	4	High	Multiple attachments at 12'; slightly thin.
159	Coast live oak	17	Yes	3	Moderate	Codominant at 18' with wide attachment; asymmetrical crown.
160	Japanese privet	6,4,3,3	No	3	Low	Multiple attachments at base; suppressed.
161	Japanese privet	8	No	3	Moderate	Single upright stem; minor dieback.
162	Coast live oak	10,8	Yes	3	Low	Top of retaining wall; codominant at base; leans south.
163	Coast live oak	9	No	2	Low	Top of retaining wall; leans south; extensive dieback.
164	Japanese privet	7,5,4,4	No	3	Low	Top of retaining wall; multiple attachments at base; suppressed to south.

Tree Assessment

San Francisquito Creek Multi-Benefit Project
Menlo Park, Palo Alto, & East Palo Alto, CA
April 2020



Tree No.	Species	Trunk Diameter (in.)	Protected Tree?	Condition 1=poor 5=excellent	Suitability for Preservation	Comments
165	Coast live oak	27	Yes	4	High	1' from wall; excellent form and structure; slightly thin; multiple attachments at 8'.
166	Camphor	14	No	2	Low	Little live foliage.
167	California buckeye	35,27,18	Yes	4	High	1' from wall; excellent form and structure; slightly thin; multiple at 2'; full widespread crown.
168	Japanese privet	7,7	No	3	Low	1' from wall; multiple attachments at base; suppressed under tree #167.
169	Australian bush cherry	17	Yes	3	Moderate	Codominant at 4' with narrow attachment; narrow form.
170	California bay	36,13,13	Yes	1	Low	Growing in concrete bench well; extensive dieback; multiple trunks arise from base.
171	Red flowering gum	16	Yes	3	Low	Top of retaining wall; codominant at 5'; suppressed to southwest.
172	Blue atlas cedar	22	Yes	2	Low	Top of retaining wall; extremely thin crown; base uplifting concrete surround.
173	Coast live oak	4	No	2	Low	Growing out of wall; thin crown.
174	Portugal laurel	7	No	2	Low	Extensive dieback; thin crown.
175	Coast live oak	8	No	3	Low	Just below top of bank; bows north.
176	Coast live oak	11	No	3	Low	Poor form and structure; narrow form.
177	Coast live oak	12	Yes	3	Low	One-sided to south+ thin crown.
178	Coast live oak	12	Yes	3	Moderate	Upright form; high crown.
179	Coast live oak	9	No	2	Low	Mid slope; thin crown; suppressed; roots undermined.
180	Coast live oak	16	Yes	4	Moderate	Bottom of slope; codominant high in crown.
181	Coast live oak	18	Yes	4	High	Good form and structure; slightly one-sided to south.
182	Coast live oak	4	No	3	Low	Suppressed to south; spindly form.
183	Coast live oak	12	Yes	3	Moderate	Suppressed to south; full, dense crown.
184	Coast live oak	11,11,11	Yes	3	Moderate	Multiple attachments at 1'; suppressed to south.

Tree Assessment

San Francisquito Creek Multi-Benefit Project
Menlo Park, Palo Alto, & East Palo Alto, CA
April 2020



Tree No.	Species	Trunk Diameter (in.)	Protected Tree?	Condition 1=poor 5=excellent	Suitability for Preservation	Comments
185	Coast live oak	11	No	3	Moderate	Top of bank; suppressed and one-sided to west.
186	Coast live oak	25	Yes	4	High	Excellent form and structure; exposed roots in bank.
187	California bay	13,10,5,5	No	3	Moderate	No tag; bottom of slope; multiple attachments at base.
188	Tree of heaven	11	No	2	Low	Bark girdled at 3'; codominant at 4'.
189	Coast live oak	15,10	Yes	3	Moderate	Codominant at base with included bark; full crown.
190	Coast live oak	12	Yes	3	Moderate	Codominant at 7'; suppressed to west.
191	Coast live oak	9	No	3	Moderate	Growing out of bank; sinuous form.
192	California bay	6,4,2	No	3	Low	Growing out of bank; 6" resting on bank.
193	Coast live oak	6	No	2	Low	No tag; rowing out of bank; poor form.
194	Coast live oak	11	No	4	Moderate	Codominant at 5'; upright form.
195	Coast live oak	11	No	3	Moderate	Interior tree; narrow and upright.
196	Coast live oak	11	No	3	Low	Interior tree; narrow and upright; thin crown.
197	Coast live oak	15	Yes	4	Moderate	Codominant at 6'; good vigor.
198	Coast live oak	5	No	1	Low	Little live foliage; basal wound.
199	Coast live oak	6,3	No	3	Moderate	Interior tree; narrow and upright; thin crown.
200	Coast live oak	12	Yes	3	Low	Grows at base of tree #201; engulfed in ivy; high crown.
201	River she-oak	12	No	3	Low	Great base of tree #200; high codominant attachment.
202	Coast live oak	8	No	2	Low	Poor form; suppressed.
203	Coast live oak	7	No	3	Low	No tag; growing out of bank; poor form; thin crown.
204	Coast live oak	19	Yes	2	Low	No tag; bottom of bank; thin crown; stems fuse together above codominant attachment.
205	Coast live oak	10,6	Yes	2	Low	No tag; growing out of bank; poor form; thin crown.
206	Coast live oak	8	No	3	Moderate	Interior tree; narrow and upright.
207	California bay	6,5	No	2	Low	Failing at base.
208	Coast live oak	11	No	3	Moderate	Suppressed to south.

Tree Assessment

San Francisquito Creek Multi-Benefit Project
Menlo Park, Palo Alto, & East Palo Alto, CA
April 2020



Tree No.	Species	Trunk Diameter (in.)	Protected Tree?	Condition 1=poor 5=excellent	Suitability for Preservation	Comments
209	Coast live oak	11,10	Yes	3	Moderate	Codominant at 3'; full crown.
210	Coast live oak	6,6	No	3	Low	Codominant at base; narrow form.
211	Coast live oak	7	No	3	Low	Suppressed to south.
212	Coast live oak	10	No	3	Low	Narrow form; thin crown.
213	Coast live oak	13	Yes	3	Moderate	Suppressed to north; high crown.
214	Coast live oak	6	No	1	Low	All but dead.
215	Coast live oak	15	Yes	3	Moderate	Codominant at 10' with wide attachment; upright form.
216	Coast live oak	15	Yes	3	Low	Suppressed to south.
217	Coast live oak	17	Yes	2	Low	One-sided to south; poor form; thin crown.
218	Elderberry	18	No	2	Low	Bottom of creek; bows heavily over creek; twig dieback.
219	Coast live oak	18	Yes	3	Low	Top of bank; failing at base over creek.
220	Coast live oak	23	Yes	4	High	Trunk sweeps at 6'; full, dense crown.
221	Coast live oak	16	Yes	4	High	Codominant at 8'; full, dense crown.
222	California buckeye	7,6,5,4	No	2	Low	Multiple attachments at base; very crown with dieback.
223	Coast live oak	14,12,12	Yes	3	Low	Multiple attachments at 3' with included bark; canopy bows to north.
224	Coast live oak	14	Yes	3	Low	Top bows west.
225	Coast live oak	22	Yes	4	Moderate	Excellent form; pruned for line clearance.
226	Coast live oak	25	Yes	3	Low	Side pruned for line clearance; epicormic growth.
227	Coast live oak	23	Yes	3	Low	Side pruned for line clearance; epicormic growth; bows south.
228	Coast live oak	27	Yes	3	Low	Codominant at base with included bark; beginning to crack apart; lightly one-sided to east; slightly thin.
229	California bay	6,4	No	3	Low	Suppressed; poor form.
230	California buckeye	7	No	3	Low	Partially failed to north; twig dieback.
231	Boxelder	11	No	1	Low	All but dead; extensive decay.

Tree Assessment

San Francisquito Creek Multi-Benefit Project
Menlo Park, Palo Alto, & East Palo Alto, CA
April 2020



Tree No.	Species	Trunk Diameter (in.)	Protected Tree?	Condition 1=poor 5=excellent	Suitability for Preservation	Comments
232	Elderberry	10,4	No	1	Low	No tag; extensive decay.
233	Elderberry	6	No	1	Low	No tag; in creek bottom; failing at base.
234	Elderberry	7,7	No	1	Low	No tag; in creek bottom; failing at base.
235	California pepper	12,6	No	1	Low	Smashed under weight of eucalyptus branches.
236	Blue gum	42	Yes	4	Moderate	Excellent form and structure; history of branch failures.
237	Coast live oak	24	Yes	4	Moderate	Top of bank; exposed roots; codominant at 3'; good bigger.
238	Bailey acacia	14	No	3	Moderate	Mid slope; upright form; codominant at 25'.
239	Fremont cottonwood	9	No	3	Low	Dieback throughout.
240	White ash	5	No	2	Low	Bottom of creek; poor form; sprouts at base.
241	Blackwood acacia	8	No	2	Low	Growing out of bank; partially failed; corrected form.
242	Coast live oak	6	No	4	Moderate	Codominant at 6' with included bark; otherwise good.
243	Blue gum	72,30,28, 22	Yes	4	Moderate	Old stump sprouts; crown reduced over utility lines; good vigor.
244	Bailey acacia	16	Yes	1	Low	Half of tree failed leaving large wound.
245	Bailey acacia	6,5,4,4,3	No	1	Low	All but dead.
246	Bailey acacia	11,5	Yes	3	Low	Top of bank; twig dieback; decay at base.
247	Blue gum	6,4	No	3	Low	No tag; bottom of creek; codominant at base; good vigor.
248	Bailey acacia	7,6,5,5,4, 4	No	3	Low	Mid slope; multiple attachments at base; leans south.
249	Fremont cottonwood	5	No	4	Moderate	Mid slope; good upright form.
250	Yellow willow	5,4,4,3	No	3	Moderate	Mid slope; multiple attachments at base.
251	Bailey acacia	15	Yes	2	Low	No tag; south side of creek; failing out of bank to north; roots undermined.
252	Fremont cottonwood	7	No	3	Moderate	Mid slope; good upright form; surrounded by small sprouts.

Tree Assessment

San Francisquito Creek Multi-Benefit Project
Menlo Park, Palo Alto, & East Palo Alto, CA
April 2020



Tree No.	Species	Trunk Diameter (in.)	Protected Tree?	Condition 1=poor 5=excellent	Suitability for Preservation	Comments
253	Bailey acacia	6,5	No	2	Low	Codominant at base; failing at base.
254	Bailey acacia	11	No	2	Low	Growing at base of tree #255; leans to south.
255	Bailey acacia	20	Yes	1	Low	Stems fused together with gap between attachments; upright leader failed.
256	Bailey acacia	11	No	2	Low	Poor form and structure; gap in canopy; leans to north.
257	Bailey acacia	6,5	No	2	Low	Poor form and structure; leans to north.
258	Bailey acacia	15,9	Yes	1	Low	15" stem has extensive crack from base to 18'; 9" stem failed.
259	Yellow willow	7	No	3	Moderate	No tag; bottom of creek; good vigor.
260	White ash	7,7,6,6,5, 5	No	3	Moderate	Bottom of creek; multiple attachments at base; good vigor.
261	California pepper	9,7	No	1	Low	All but dead.
262	Italian buckthorn	6,5	No	2	Low	Codominant at 1'; poor form.
263	Bailey acacia	13	No	1	Low	Failing to west; poor form; all but dead.
264	Blue gum	84	Yes	5	High	Excellent health and structure; upright; full, dense crown.
265	Fremont cottonwood	14,12	No	3	Moderate	Codominant at base; just upslope from creek; good vigor.
266	Coast live oak	7	No	3	Moderate	Upright narrow form.
267	Coast live oak	13	Yes	3	Moderate	Codominant at 8'; upright, narrow form.
268	Coast live oak	8	No	2	Low	Poor form.
269	Coast live oak	15	Yes	4	Moderate	Multiple attachments at 7'; high crown; good vigor.
270	Canary Island date palm	36	Yes	4	Moderate	Fronks to base; full crown.
271	Coast live oak	14	Yes	3	Moderate	Sinuuous form; leans over road; codominant at 15'.
272	Coast live oak	8	No	3	Low	Thin, narrow form.
273	Coast live oak	12	Yes	3	Low	Sinuuous form; poor form; small crown.
274	Coast live oak	13	Yes	3	Low	Leans to south.

Tree Assessment

San Francisquito Creek Multi-Benefit Project
Menlo Park, Palo Alto, & East Palo Alto, CA
April 2020



Tree No.	Species	Trunk Diameter (in.)	Protected Tree?	Condition 1=poor 5=excellent	Suitability for Preservation	Comments
275	Coast live oak	9	No	4	High	Good young tree; multiple attachments at 6'.
276	Coast live oak	15	Yes	5	High	Excellent health and structure; good vigor.
277	Myoporum	12,7,6,6	Yes	2	Low	Multiple attachments at base; top of bank; failing at base.
278	Myoporum	8,7,6	No	2	Low	Engulfed in ivy; multiple attachments at base.
279	Coast live oak	15,12	Yes	4	High	No tag; mid-slope; codominant at 2'; good health and structure.
280	Elderberry	13,12,10, 8,8,6,6	Yes	3	Low	Top of bank; one-sided to east; multiple attachments at base.
281	Myoporum	9,6	No	2	Low	Codominant at base; extensive dieback; 6" dead.
282	Elderberry	15,12,12, 12,8,8,8,8, ,6,6,6	Yes	2	Low	Multiple attachments at base; thin crown with dieback; engulfed in ivy.
283	Coast redwood	16	Yes	5	High	Off-site; excellent health and structure; branch overhang 10'.
284	Coast live oak	30,24,18, 18	Yes	4	High	Off-site; tag on fence; can't see base; multiple attachments; full, dense crown; crown extends 13' over project.
285	Coast live oak	36,20,12	Yes	4	High	Off-site; tag on fence; can't see base; multiple attachments; full, dense crown; crown extends 4' over project.
286	Chinese elm	17	No	4	Moderate	Off-site; tag on fence; can't see base; thin upper crown; crown extends 12' over project.
287	Chinese elm	12	No	4	High	Off-site; tag on fence; can't see base; full crown; crown extends 10' over project.
288	Incense cedar	18	No	4	High	Off-site; tag on fence; can't see base; full crown; crown extends 8' over project.
289	London plane	28	No	3	Low	Off-site; tag on fence; can't see base; thin crown with anthracnose; heavy low lateral extends 20'.
290	Victorian box	9,8,5	No	3	Low	Off-site; tag on fence; can't see base; thin crown; extensive decay in 8" stem; crown extends 8' over project.
291	Canary Island date palm	36	No	4	Moderate	Close to base of tree #293; 6' brown trunk.

Tree Assessment

San Francisquito Creek Multi-Benefit Project
 Menlo Park, Palo Alto, & East Palo Alto, CA
 April 2020



Tree No.	Species	Trunk Diameter (in.)	Protected Tree?	Condition 1=poor 5=excellent	Suitability for Preservation	Comments
292	Coast live oak	23	Yes	4	Moderate	Leans south; crown lifted; full, dense crown.
293	Deodar cedar	29	No	4	Moderate	Slightly thin crown; lost central leader; good upright form.
294	Deodar cedar	17	No	3	Moderate	Good upright form; one-sided to south; thin crown.
295	California buckeye	24,22,22	No	3	Moderate	History of branch failures; poor structure; crossing branches; huge cavity at base; prune for structure.
296	Blue gum	31	No	4	Moderate	Good vigor; crown reduced over road.
297	Blue gum	43	No	3	Moderate	Good upright form; thin upper crown with dieback.
298	Plum	6,6,6,5,54,4	No	3	Low	Top of bank; engulfed in ivy; multiple attachments at base; twig dieback.
299	California bay	9	No	4	Moderate	Growing between fence and stacked concrete wall; full, dense crown.
300	California bay	7,6	No	3	Moderate	Growing between fence and stacked concrete wall; codominant at base.
301	Elderberry	12,11	No	2	Low	Top of bank at base of concrete stacked wall; codominant at base with decay.
302	Blue gum	14	No	1	Low	Top bows heavy to east; suppressed.
303	Coast live oak	11,9	Yes	3	Moderate	Growing between fence and stacked concrete wall; codominant at 3'; grows over top of stacked wall; full, dense crown.
304	Elderberry	13,10	No	3	Moderate	Growing between fence and stacked concrete wall; codominant at 4'; twig dieback.
305	Plum	4,3,3,3,2,2,1,1	No	3	Low	Mid slope; multiple attachments at base.
306	Coast live oak	4	No	4	High	Top of slope; good young tree.
307	Southern live oak	4	No	2	Low	Top dead; poor color.
308	Victorian box	9,6	No	3	Moderate	Growing between fence and stacked concrete wall; multiple attachments at base; twig dieback.
309	Victorian box	6,5	No	1	Low	Growing between fence and stacked concrete wall; codominant at base; extensive twig dieback.

Tree Assessment

San Francisquito Creek Multi-Benefit Project
 Menlo Park, Palo Alto, & East Palo Alto, CA
 April 2020



Tree No.	Species	Trunk Diameter (in.)	Protected Tree?	Condition 1=poor 5=excellent	Suitability for Preservation	Comments
310	Victorian box	9,7	No	2	Low	Growing between fence and stacked concrete wall; codominant at base; twig dieback.
311	Victorian box	9,6	No	2	Low	Growing between fence and stacked concrete wall; codominant at base; twig dieback.
312	California bay	56,47	No	3	Low	Massive tree with extensive basal decay; previously topped.
313	California bay	5	No	3	Moderate	Growing between fence and stacked concrete wall; suppressed form.
314	California bay	12	No	2	Low	Little live foliage; engulfed in ivy.
315	California bay	8	No	4	Moderate	Growing between fence and stacked concrete wall; sinuous form.
316	California bay	8	No	4	Moderate	Growing between fence and stacked concrete wall; codominant at 5'.
317	California bay	7	No	4	Moderate	Growing between fence and stacked concrete wall; slightly thin.
318	California bay	7	No	4	Moderate	Growing between fence and stacked concrete wall; codominant at 5'.
319	Blackwood acacia	21	No	3	Low	Poor form and structure; heavy lateral to west.
320	Elderberry	10,10	No	3	Moderate	No tag; top of bank; codominant at base; engulfed in poison oak.
321	Coast live oak	12	Yes	1	Low	Failed at base; laying on bank; live upright stems from main trunk.
322	Blue gum	24,15	No	2	Low	Only live sprouts from topped stump.
323	California bay	6	No	3	Moderate	Branching to ground; dense crown.
324	California bay	8	No	4	Moderate	Slight bow to west.
325	Blue gum	39	No	3	Moderate	One-sided and suppressed to west; codominant at 18'.
326	California bay	6	No	2	Low	Corrected form to east; poor form.
327	Victorian box	16,9,8,6	No	4	Moderate	Top of bank; 9" stem failed; 16" stem has good form and structure.

Tree Assessment

San Francisquito Creek Multi-Benefit Project
Menlo Park, Palo Alto, & East Palo Alto, CA
April 2020



Tree No.	Species	Trunk Diameter (in.)	Protected Tree?	Condition 1=poor 5=excellent	Suitability for Preservation	Comments
328	California bay	8	No	3	Low	Mid slope; suppressed to north.
329	English holly	8	No	3	Moderate	Growing between fence and stacked concrete wall; codominant at 4'.
330	Blackwood acacia	13,9	No	3	Low	Codominant at base; full, dense crown.
331	Elderberry	32	No	3	Low	Very thin upper crown; twig dieback.
332	California black walnut	13	No	2	Low	Poor form; growing through concrete wall; heavy bow to west.
333	Coast live oak	15	Yes	3	Moderate	Growing between fence and stacked concrete wall; codominant at 7'; slightly crowded.
334	Coast live oak	15	Yes	3	Moderate	Growing at top of concrete wall; heavy lean over creek.
335	California black walnut	15,13,12, 8,8,6	No	1	Low	Extensive decay at base; little live foliage.
336	Blue gum	51,14	No	3	Low	Growing between fence and stacked concrete wall; multiple attachments at 15'; severely topped with resprouts.
337	Blue gum	48	No	2	Low	Off-site; severely topped; decay in topping wounds.
338	California black walnut	13,12	No	1	Low	Growing at top of concrete stacked wall; all but dead.
339	Coast live oak	9	No	4	High	Growing between fence and stacked concrete wall; good young tree; slightly crooked.
340	Coast live oak	7	No	3	Low	Growing out of concrete stacked wall; base sweeps.
341	California buckeye	6	No	2	Low	Partially failed downhill.
342	Purpleleaf plum	12	No	1	Low	History of branch failures; poor structure.
343	California black walnut	9,7,6	No	2	Low	Top of bank; multiple attachments at base; engulfed in ivy.
344	Fremont cottonwood	21	No	2	Low	Heavy lean to east; full, dense crown.
345	California black walnut	33,31	No	1	Low	Mid slope; codominant at 5'; extensive dieback.

Tree Assessment

San Francisquito Creek Multi-Benefit Project
 Menlo Park, Palo Alto, & East Palo Alto, CA
 April 2020



Tree No.	Species	Trunk Diameter (in.)	Protected Tree?	Condition 1=poor 5=excellent	Suitability for Preservation	Comments
346	California buckeye	15,15,14	No	3	Low	Top of bank; multiple attachments at base; twig and branch dieback.
347	Coast redwood	36	Yes	3	Moderate	Top of bank; upright form; slightly thin; engulfed in ivy.
348	California black walnut	21	No	3	Low	Top of bank; history of branch failures.
349	California bay	13,4	No	3	Moderate	Top of bank; suppressed to west.
350	California buckeye	6,6,6,4	No	3	Low	Multiple attachments at base; one 6" stem dead; engulfed in ivy.
351	California buckeye	12,9	No	4	High	Top of bank; codominant at 2'; good form and structure.
352	California black walnut	32,17	No	1	Low	Top of bank; extensive trunk cavity; little live foliage.
353	Loquat	8	No	4	High	Top of bank; good young tree.
354	Loquat	5,3	No	3	Moderate	Top of bank; exposed surface roots.
355	Blackwood acacia	33	No	3	Low	Mid slope; corrected form and leaning east; full, dense crown; roots exposed in creek bed.
356	Blackwood acacia	15	No	3	Low	Mid slope; codominant high in crown; roots exposed in creek bed.
357	Carolina cherry laurel	5	No	3	Low	Top of bank; heavy lean to north.
358	Carolina cherry laurel	10	No	3	Moderate	Top of bank; codominant at 6'.
359	California bay	19,16,9,9,5	No	1	Low	Mid slope; extensive basal decay and dieback; one upright stem dead.
360	Chinese elm	13,10,8	No	3	Low	Top of slope; poor form; history of branch failures.
361	Blue gum	25	No	4	High	Top of slope; good form; hanger; minor dieback.
362	California bay	24,13,12,5	No	3	Low	Multiple attachments at base; poor form.
363	California buckeye	4,3,3	No	3	Low	Growing out of side of bank; all branches extend to east.

Tree Assessment

San Francisquito Creek Multi-Benefit Project
Menlo Park, Palo Alto, & East Palo Alto, CA
April 2020



Tree No.	Species	Trunk Diameter (in.)	Protected Tree?	Condition 1=poor 5=excellent	Suitability for Preservation	Comments
364	Monterey pine	30	No	3	Low	Top of bank; codominant high in crown; engulfed in ivy.
365	Monterey pine	18	No	3	Low	Top of bank; engulfed in ivy; leans north.
366	California buckeye	7,5	No	3	Moderate	Top of bank; shaded; suppressed.
367	Deodar cedar	14	No	3	Moderate	Good upright form; engulfed in ivy.
368	California buckeye	18,15,15, 14	No	3	Low	Top of bank; history of branch failures.
369	Yellow willow	6,6,5,5,4, 4,2,2	No	3	Low	In creek bottom; all branches bow east.
370	White ash	4,2	No	3	Low	Edge of bank; small sprouts.
371	Yellow willow	9,7,6,5,5, 4	No	3	Low	In creek bottom; all branches bow east; multiple attachments at base.
372	Yellow willow	11,6,5	No	3	Low	In creek bottom; all branches bow east; multiple attachments at base.
373	Coast live oak	8,4	No	3	Moderate	Edge of bank; engulfed in ivy.
374	Monterey pine	13	No	3	Moderate	Top of bank; engulfed in ivy.
375	Monterey pine	20	No	3	Moderate	Top of bank; engulfed in ivy; minor dieback.
376	Monterey pine	13	No	2	Low	Top of bank; engulfed in ivy; poor form; lost central leader.
377	White ash	5,4	No	3	Low	Edge of bank; multiple attachments at base; poor form.
378	California buckeye	7	No	3	Moderate	Top of bank; crook at 1'; leans to north.
379	Unknown	9	No	0		Top of bank; dead.
380	Carolina cherry laurel	7,6,6,5,4	No	3	Low	Mid slope; multiple attachments at base; dieback in upper crown.
381	White ash	4,4,4	No	2	Low	Sprouts from decayed stump; all branches bow east.
382	Coast live oak	28	Yes	3	Moderate	Tagged on ivy below tree; top of bank; engulfed in ivy; codominant at 7'; full crown.
383	Blue gum	36,24	No	1	Low	In rapid decline; extensive foliage loss; dieback.
384	Blue gum	48	No	3	Low	Mid slope; engulfed in ivy; upper crown bows to east.

Tree Assessment

San Francisquito Creek Multi-Benefit Project
Menlo Park, Palo Alto, & East Palo Alto, CA
April 2020



Tree No.	Species	Trunk Diameter (in.)	Protected Tree?	Condition 1=poor 5=excellent	Suitability for Preservation	Comments
385	Blue gum	50	No	3	Moderate	Mid slope; engulfed in ivy; multiple attachments at 25' with narrow attachments; interior tree.
386	Blue gum	35	No	3	Moderate	Mid slope; engulfed in ivy; multiple attachments at 20' with narrow attachments.
387	Blue gum	38	No	3	Low	At property line; multiple attachments at 8'; previously topped.
388	Coast live oak	12	Yes	3	Low	Top of bank; tag on barbed wire fence; poor form.
389	Japanese privet	7,5,5,4,4	No	3	Low	At property line; multiple attachments at base; twig dieback.
390	Coast live oak	15	Yes	4	Moderate	Tagged on wall; top of bank; trunk bows to east; full, dense crown.
391	Tobira	10,9,5,4,4	No	4	Moderate	Tagged on wall; top of bank; multiple attachments at base; full, dense crown.
392	White ash	5,4,4,3,3	No	2	Low	Tagged on wall; grows out of bank; poor form.
393	Little leaf linden	11,10	No	2	Low	Tagged on fence; codominant at base; engulfed in ivy; extensive dieback.
394	Coast live oak	36	Yes	2	Low	Tagged on fence; failed at base; crown is very vigorous still.
395	Japanese privet	4,3,2	No	3	Low	Tagged on slope below tree; mid slope; multiple attachments at base; thin crown.
396	Yellow willow	8,6,5,4,4	No	3	Moderate	North edge of creek; bottom of creek bed; multiple attachments at base; full, dense crown.
397	Blackwood acacia	25,11	No	2	Low	Tagged on shrub below tree; engulfed in ivy; extensive dieback; half of crown is dead.
398	California buckeye	9,6,6,4,3,3	No	2	Low	North side of creek; growing out of bank; exposed roots; crown failing to east.
399	Yellow willow	20	No	2	Low	Roots undermined; half of tree failed into creek; engulfed in ivy.
400	Coast live oak	20,18	Yes	4	High	Top of bank; codominant at base with included bark; full, dense crown.
401	Coast live oak	5	No	3	Moderate	Top of bank; suppressed to north; engulfed in ivy.
402	Coast live oak	14	Yes	3	Moderate	Top of bank; upright form; engulfed in ivy.

Tree Assessment

San Francisquito Creek Multi-Benefit Project
Menlo Park, Palo Alto, & East Palo Alto, CA
April 2020



Tree No.	Species	Trunk Diameter (in.)	Protected Tree?	Condition 1=poor 5=excellent	Suitability for Preservation	Comments
403	Yellow willow	5,4,3,3	No	2	Low	Bottom of creek; failed to east.
404	Yellow willow	12	No	2	Low	Bottom of creek; failed to east.
405	Yellow willow	11,10,9,7, 7,7,6,5	No	2	Low	Bottom of creek; stems from failed trunk; dieback.
406	Valley oak	18,15	Yes	4	High	No tag; codominant at 2'; base engulfed in ivy; nice crown.
407	California black walnut	15	No	3	Low	North side of creek; leans and suppressed south; exposed roots.
408	Yellow willow	5,4,4	No	1	Low	North side of creek; failed at base.
409	California buckeye	27,15	No	4	High	At property line; displacing old wall; beautiful crown.
410	California buckeye	9,9,8 8,7,7,6,6, 5	No	3	Moderate	Just below property line; displacing concrete bank; suppressed to north.
411	Fremont cottonwood	13,12,10	No	3	Low	North side of creek; bank undermined below tree; multiple attachments at base; full crown.
412	Yellow willow	5,5,4,4	No	2	Low	North side of creek; failed at base in creek.
413	Coast live oak	13	Yes	4	High	In island; good form; slightly one-sided to west.
414	Coast live oak	10	No	3	Moderate	In island; codominant at 6' with wide attachment.
415	Coast live oak	48	Yes	4	Moderate	Off-site; tagged on fence; multiple attachments at 7'; stems on north beginning to separate from crown; full, dense crown.
416	Coast live oak	8	No	2	Low	Base outside dripline; poor form.
417	Coast live oak	9	No	2	Low	Narrow, suppressed form; heavy lean to north.
418	Coast live oak	32	Yes	3	Moderate	Off-site; multiple attachments at 15'; failure on north left wound; full, dense crown.
419	Coast live oak	19,8	Yes	3	Moderate	Codominant at base; suppressed and one-sided to north; trunk wound.
420	Coast live oak	14	Yes	3	Moderate	Off-site; tagged on fence; multiple attachments at 5' with included bark; low lateral limbs over road.

Tree Assessment

San Francisquito Creek Multi-Benefit Project
Menlo Park, Palo Alto, & East Palo Alto, CA
April 2020



Tree No.	Species	Trunk Diameter (in.)	Protected Tree?	Condition 1=poor 5=excellent	Suitability for Preservation	Comments
421	California buckeye	6,5	No	2	Low	Codominant at 1'; trunk wound; stems bow to west.
422	Coast live oak	19,17,16	Yes	3	Moderate	Multiple attachments at 4' with included bark; heavy laterals over road; trunk wound; full, dense crown.
423	Coast live oak	20,17,12	Yes	3	Moderate	Codominant at 1'; old fence wire embedded in base; suppressed to east.
424	Coast live oak	15	Yes	2	Low	Poor form and structure; suppressed.
425	Coast live oak	50	Yes	4	High	Multiple attachments at 5'; crown reduced for utility clearance.
426	Coast live oak	36	Yes	3	Moderate	Extensive trunk wound with decay; heavy low lateral limb to south touches ground; history of branch failures.
427	California buckeye	13,12,10, 8,6,6	No	3	Moderate	Top of bank; exposed roots in bank; multiple attachments at base.
428	Coast live oak	10	No	3	Low	Top of bank; horizontal to bank.
429	Fremont cottonwood	13,7	Yes	3	Low	Mid slope; codominant at base; upright form.
430	Blue gum	36,25,24, 14	Yes	3	Moderate	Mid slope; multiple attachments at base; two upright stems dead; stem to east leans over bridge; otherwise upright.
431	Yellow willow	10	No	3	Low	Bottom of creek bed; poor form and structure.
432	Coast live oak	10	No	3	Moderate	Suppressed to east.
433	Blue gum	24,16,5	Yes	3	Low	Mid slope; multiple attachments at base engulfed in ivy; twig dieback.
434	Blue gum	20	Yes	2	Low	No tag; yellow jackets near base; completely engulfed in ivy; top bows to east.
435	Blue gum	36	Yes	3	Moderate	No tag; yellow jackets near base; completely engulfed in ivy; good form.
436	Yellow willow	6,4,4		2	Low	Bottom of creek; failed to east.
437	Yellow willow	6,4,4		1	Low	Edge of creek; stems from failed trunk.
438	Blackwood acacia	5	No	3	Moderate	Codominant attachment failed at 4'; otherwise upright.

Tree Assessment

San Francisquito Creek Multi-Benefit Project
Menlo Park, Palo Alto, & East Palo Alto, CA
April 2020



Tree No.	Species	Trunk Diameter (in.)	Protected Tree?	Condition 1=poor 5=excellent	Suitability for Preservation	Comments
439	Fremont cottonwood	16	Yes	1	Low	Little live foliage; branch dieback.
440	Fremont cottonwood	18	Yes	2	Low	Dieback in upper crown; engulfed in ivy.
441	Fremont cottonwood	13	Yes	2	Low	High crown; history of branch failures.
442	Fremont cottonwood	36,24,20	Yes	3	Low	Bottom of creek bed; multiple attachments at base; 20" leans heavy over creek; twig dieback; engulfed in ivy.
443	Fremont cottonwood	20	Yes	1	Low	All but dead; extensive dieback.
444	Boxelder	10,10,9,7, 6,5,2	Yes	2	Low	Multiple attachments at base; poor structure; failed at base.
445	Yellow willow	9,6,5,4	No	1	Low	Multiple attachments at base; poor structure; failed at base; excessive debris hung up in tree.
446	Yellow willow	5,5,5,5,4	No	2	Low	Multiple attachments at base; poor structure; failed at base.
447	Yellow willow	4,4,4		2	Low	Bottom of creek bed; multiple attachments base; excessive debris at base.
448	California black walnut	14	Yes	2	Low	Leans to west; decay in upright leader; history of branch failures.
449	California black walnut	4,4,4	No	2	Low	Multiple attachments at base; suppressed; base engulfed in ivy.
450	California black walnut	16,12	Yes	2	Low	Mid slope; engulfed in ivy; twig and branch dieback.
451	Coast live oak	42	Yes	4	High	Multiple attachments at 8; good form and structure; full, dense crown.
452	California black walnut	12	No	2	Low	Trunk bows heavy to south over creek; suppressed by tree #453.
453	Blue gum	26	Yes	3	Low	Bows heavy to east; small crown.
454	Blue gum	16	Yes	2	Low	Completely engulfed in ivy; small crown.

Tree Assessment

San Francisquito Creek Multi-Benefit Project
Menlo Park, Palo Alto, & East Palo Alto, CA
April 2020



Tree No.	Species	Trunk Diameter (in.)	Protected Tree?	Condition 1=poor 5=excellent	Suitability for Preservation	Comments
455	Blue gum	60	Yes	3	Moderate	Multiple attachments at 8'; twig dieback.
456	Blue gum	20	Yes	2	Low	Upright form; high lateral limb extends over road; twig dieback.
457	California black walnut	5	No	1	Low	Poor form and structure; extensive dieback.
458	Blackwood acacia	11,8,8	Yes	2	Low	Sprouts from failed stem.
459	Blackwood acacia	14,12	Yes	2	Low	Partially failed; leans to south; codominant at 5'.
460	White ash	6,4	No	2	Low	Growing out of bank; crook at 1'.
461	Blue gum	36	Yes	4	High	Excellent upright growth; slightly thin.
462	Blue gum	35,28,19, 18,12	Yes	4	High	At creek edge; multiple attachments at 4'; upright form.
463	Yellow willow	5	No	2	Low	Growing in creek bottom.
464	Blue gum	36	Yes	4	High	At creek edge; upright form.
465	Blue gum	48	Yes	3	Moderate	At creek edge; codominant at 7' with narrow attachment; exposed roots.
466	Coast live oak	8	No	3	Moderate	Ok form; slightly one-sided to east.
467	Blue gum	13	Yes	3	Low	At creek edge narrow form; exposed roots in eroded bank.
468	Blue gum	40	Yes	3	Low	At creek edge; codominant at 12' with narrow attachment; exposed roots in eroded bank.
469	Blue gum	12		3	Low	Growing out of bank; poor structure.
470	Coast live oak	7	No	3	Low	Growing out of bank; poor structure.
471	Coast live oak	17	Yes	3	Low	Growing out of bank; poor structure; full, dense crown.
472	Yellow willow	4,3,2,2	No	3	Low	Multiple attachments at base; shrub-like; low branching.
473	California black walnut	6	No	1	Low	Very poor structure.
474	Yellow willow	11,7	No	2	Low	Codominant at base; 7" dead; little live foliage on 11" stem.
475	Coast live oak	13	Yes	2	Low	Heavy lean over creek; engulfed in ivy.

Tree Assessment

San Francisquito Creek Multi-Benefit Project
Menlo Park, Palo Alto, & East Palo Alto, CA
April 2020



Tree No.	Species	Trunk Diameter (in.)	Protected Tree?	Condition 1=poor 5=excellent	Suitability for Preservation	Comments
476	White ash	17	No	2	Low	Heavy lean over creek; engulfed in poison oak; poor form and structure.
477	Bailey acacia	13	Yes	3	Low	Leans over creek; full, dense crown.
478	Bailey acacia	7	No	3	Moderate	Mid slope; upright form; full, dense crown.
479	California buckeye	5,4	No	4	High	Mid slope; codominant at base; good young tree.
480	Blackwood acacia	10,4	Yes	3	Low	Edge of bank; codominant at base; upright.
481	Blackwood acacia	7 and smaller	No	3	Low	Edge of bank; 20 stems 7" and smaller form grove.
482	Blackwood acacia	17,14,11	Yes	3	Low	Edge of bank; multiple attachments at base; upright; exposed roots in undermined bank.
483	Blackwood acacia	9	No	1	Low	Failing out of bank.
484	Blackwood acacia	19,18	Yes	3	Low	Codominant at base; at creek edge; narrow and upright; exposed roots in bank.
485	California bay	17,8	Yes	3	Low	At creek edge; codominant at base; exposed roots being undermined.
486	Coast live oak	9	No	1	Low	All but dead.
487	Elderberry	7,6,5,4,4	No	2	Low	In creek bottom; multiple attachments at base.
488	Coast live oak	8	No	4	High	Top of bank; full crown; engulfed in poison oak.
489	California buckeye	8,6,6,6,5,5,4,4,4	No	3	Moderate	Mid slope; multiple attachments at base; exposed roots being undermined.
490	California black walnut	34	Yes	3	Moderate	Engulfed in ivy; topped for line clearance.
491	California buckeye	9,9,8,8,7,3	Yes	3	Low	Mid slope; multiple attachments at base; exposed roots being undermined; twig dieback.
492	California black walnut	9,8,8	No	3	Low	No tag; west of tree #491; mid slope; multiple attachments at 5'; exposed roots being undermined; twig dieback.
493	California buckeye	22,16	Yes	3	Low	Suppressed form; codominant at 3'; 22" stem bows at 8'; 16" stem extends over creek.

Tree Assessment

San Francisquito Creek Multi-Benefit Project
Menlo Park, Palo Alto, & East Palo Alto, CA
April 2020



Tree No.	Species	Trunk Diameter (in.)	Protected Tree?	Condition 1=poor 5=excellent	Suitability for Preservation	Comments
494	California black walnut	36	Yes	2	Low	Top of bank; very thin crown.
495	California buckeye	7,6,6	No	2	Low	Top of bank; very thin crown; suppressed to east.
496	California buckeye	5,4	No	3	Low	Top of bank; engulfed in ivy.
497	California buckeye	7,5,5	No	3	Low	Top of bank; engulfed in ivy; multiple attachments at 2'.
498	Coast live oak	17	Yes	3	Low	Top of bank; engulfed in ivy; heavy lean over road.
499	California black walnut	24	Yes	2	Low	One-sided to west; thin crown.
500	California black walnut	18,12	Yes	1	Low	Upper crown dead; engulfed in ivy.
501	Coast live oak	56	Yes	4	Moderate	Top of bank; codominant at 6; engulfed in ivy; under utility lines.
502	California black walnut	18	Yes	3	Low	Top of bank; topped for line clearance; leans to east.
503	California black walnut	8,4	No	2	Low	Completely engulfed in ivy; small crown.
504	California bay	42	Yes	3	Low	Top of bank; side pruned for utility clearance; codominant stem at 8' extends over creek.
505	Coast live oak	5,5,5,5	No	3	Moderate	Top of bank; multiple attachments at base; under utility lines; full, dense crown to ground.
506	Blue gum	12	No	2	Low	Tagged on privet; mid slope; heavy lean to east.
507	Coast live oak	14,12,8	Yes	3	Low	Top of bank; exposed roots in undermined slope; engulfed in ivy; multiple attachments at base; full crown suppressed to north.
508	California buckeye	8	No	2	Low	Edge of bank; poor structure; thin crown.
509	Coast live oak	8,5,4,4	No	4	High	Multiple attachments at base; full crown; good young tree.
510	Coast live oak	12,4	Yes	4	Moderate	Suppressed to north; engulfed in ivy.
511	California buckeye	36,26	Yes	3	Moderate	Codominant at 1' with extensive decay below attachment; engulfed in ivy; branch dieback.

Tree Assessment

San Francisquito Creek Multi-Benefit Project
Menlo Park, Palo Alto, & East Palo Alto, CA
April 2020



Tree No.	Species	Trunk Diameter (in.)	Protected Tree?	Condition 1=poor 5=excellent	Suitability for Preservation	Comments
512	Coast live oak	18,12,4	Yes	2	Low	Poor structure; 18" stem resting on ground.
513	California buckeye	14,11,8	Yes	2	Low	Multiple attachments at base; basal decay; suppressed to west.
514	California buckeye	17,15,15, 15	Yes	3	Moderate	Multiple attachments at base; suppressed to east; crown within utility line.
515	Coast live oak	18	Yes	3	Low	Heavy lean to north over road; slightly corrected form.
516	Blue gum	36	Yes	4	Moderate	Mid slope; upright form; engulfed in poison oak; could be pruned.
517	California black walnut	30	Yes	3	Low	Multiple attachments at 8'; thin crown with dieback.
518	Coast live oak	6,4	No	3	Moderate	Leans to east; full crown.
519	Elderberry	9,8	No	3	Moderate	Top of bank; codominant at base; engulfed in ivy.
520	Elderberry	12	No	1	Low	Completely suppressed to east; engulfed in ivy.
521	California buckeye	6,5	No	3	Low	Codominant at base; engulfed in ivy; thin crown; being crushed by neighboring tree.
522	Coast live oak	18	Yes	4	High	Excellent form and structure; engulfed in ivy; full, dense crown.
523	Fremont cottonwood	7	No	2	Low	Partially failed; twig dieback.
524	Coast live oak	4	No	3	Moderate	Suppressed to west; narrow form.
525	Coast live oak	5	No	3	Moderate	Suppressed to north; narrow form.
526	Coast live oak	8	No	3	Moderate	Suppressed to north; full, dense crown.
527	Blue gum	56	Yes	3	Moderate	Codominant at 10' with narrow attachment; thin crown with minor dieback.
528	Coast live oak	4	No	2	Low	Suppressed by ivy.
529	Blue gum	31	Yes	3	Moderate	Base engulfed in ivy; upright form; thin crown.
530	Blue gum	36	Yes	4	Moderate	Base engulfed in ivy; upright form; slightly thin crown.
531	Blue gum	46	Yes	3	Low	Base engulfed in ivy; leans west; thin crown.

Tree Assessment

San Francisquito Creek Multi-Benefit Project
Menlo Park, Palo Alto, & East Palo Alto, CA
April 2020



Tree No.	Species	Trunk Diameter (in.)	Protected Tree?	Condition 1=poor 5=excellent	Suitability for Preservation	Comments
532	Blue gum	27,24,24, 20	Yes	4	Moderate	Multiple attachments at base with narrow attachments; high crown; slightly thin crown.
533	Blue gum	26,24	Yes	3	Moderate	Codominant at base; leans south over creek.
534	Coast live oak	13	Yes	4	Moderate	Good young tree; under utility lines.
535	California buckeye	6,4,3,3	No	4	Moderate	Multiple attachments at base; full crown.

Preliminary Tree Disposition

San Francisquito Creek Multi-Benefit Project
Menlo Park, Palo Alto, & East Palo Alto, CA
April 2020



Tree No.	Species	Trunk Diameter (in.)	Protected Tree?	Condition 1=poor 5=excellent	Suitability for Preservation	Comments
1	Coast live oak	19	Yes	4	Moderate	Remove
2	Coast live oak	20	Yes	4	Moderate	Remove
3	Coast live oak	10	No	2	Low	Remove
4	Coast live oak	10,5	Yes	3	Low	Remove
5	Coast live oak	19,10	Yes	4	Moderate	Remove
6	California bay	8	No	3	Low	Remove
7	Coast live oak	17	Yes	4	Moderate	Remove
8	Coast live oak	14,10	Yes	4	Moderate	Remove
9	Majestic Beauty Indian hawthorn	5;4;4	No	3	Low	Remove
10	Coast live oak	13	Yes	4	Moderate	Remove
11	Coast live oak	22	Yes	4	Moderate	Remove
12	White ash	13,9,4	No	1	Low	Remove
13	California bay	36,34,22,1 5,4	Yes	3	Moderate	Remove
14	Coast live oak	10	Yes	5	High	Remove
15	Coast live oak	11	Yes	4	Moderate	Remove
16	Coast live oak	11,10,8	Yes	3	Moderate	Remove
17	Coast live oak	9,5,5	Yes	4	Moderate	Remove
18	Coast live oak	11	Yes	5	High	Remove
19	Coast live oak	9	Yes	4	Moderate	Remove
20	Coast live oak	7	Yes	3	Low	Remove
21	Coast live oak	12,12,9	Yes	3	Low	Remove
22	Coast live oak	11	No	4	Moderate	Remove
23	Coast live oak	12	Yes	3	Low	Remove
24	Coast live oak	21,17,17	Yes	5	High	Remove
25	California bay	20	Yes	3	Moderate	Remove
26	Coast live oak	14,9	Yes	4	Moderate	Remove
27	Coast live oak	14,9	Yes	3	Moderate	Remove
28	Coast live oak	7,6,5,4	Yes	3	Low	Remove
29	Coast live oak	5		2	Low	Remove
30	Coast live oak	14,10	Yes	4	Moderate	Remove
31	Coast live oak	8,7	No	3	Low	Remove
32	Coast live oak	31	Yes	3	Moderate	Remove
33	Coast live oak	12	Yes	3	Moderate	Remove
34	Coast live oak	11,6	Yes	3	Moderate	Remove
35	Coast live oak	5	No	2	Low	Remove
36	Coast live oak	13	Yes	3	Moderate	Remove
37	Coast live oak	5,4	No	3	Low	Remove

Preliminary Tree Disposition

San Francisquito Creek Multi-Benefit Project
Menlo Park, Palo Alto, & East Palo Alto, CA
April 2020



Tree No.	Species	Trunk Diameter (in.)	Protected Tree?	Condition 1=poor 5=excellent	Suitability for Preservation	Comments
38	Coast live oak	53	Yes	3	Low	Remove
39	Coast live oak	11,7	Yes	3	Low	Preserve
40	Coast live oak	7	No	3	Low	Preserve
41	Coast live oak	16	Yes	3	Low	Preserve
42	Italian stone pine	26	No	3	Low	Preserve
43	Coast live oak	9	No	3	Low	Preserve
44	Coast live oak	34	Yes	3	Low	Preserve
45	Saucer magnolia	6	No	3	Low	Remove
46	Coast live oak	46	Yes	3	Moderate	Remove
47	Southern magnolia	14	Yes	4	Moderate	Remove
48	Southern magnolia	14	Yes	4	Moderate	Remove
49	Southern magnolia	14	Yes	4	Moderate	Remove
50	Southern magnolia	10	Yes	4	Moderate	Remove
51	Coast live oak	28	Yes	4	Moderate	Preserve
52	Coast live oak	17	Yes	4	Moderate	Preserve
53	Bailey acacia	7,7,5,5,5	No	2	Low	Preserve
54	Bailey acacia	6,5	No	2	Low	Preserve
55	Bailey acacia	5	No	1	Low	Preserve
56	Bailey acacia	9,7,6	No	2	Low	Preserve
57	Bailey acacia	8	No	3	Low	Preserve
58	Coast live oak	5	No	3	Moderate	Preserve
59	Bailey acacia	6,6,5,5,5,4,4,4	No	2	Low	Preserve
60	Bailey acacia	10,7	Yes	2	Low	Preserve
61	Bailey acacia	6	No	2	Low	Preserve
62	Bailey acacia	6,5,5	No	2	Low	Preserve
63	Bailey acacia	6,5,5	No	2	Low	Preserve
64	Bailey acacia	9,8,7,6,6	No	2	Low	Preserve
65	Coast live oak	18,7	Yes	4	High	Preserve
66	Bailey acacia	12,12,9,6	Yes	2	Low	Preserve
67	Bailey acacia	7	No	2	Low	Preserve
68	Bailey acacia	9,9,8,7	No	2	Low	Preserve
69	Bailey acacia	9,4,4	No	2	Low	Preserve
70	Bailey acacia	6,5,5,5,4	No	2	Low	Preserve
71	Coast live oak	18	Yes	4	High	Preserve
72	Bailey acacia	5,5,5,4,4,4	No	2	Low	Preserve
73	Coast live oak	45	Yes	2	Low	Preserve
74	Coast live oak	24,21	Yes	3	Moderate	Preserve

Preliminary Tree Disposition

San Francisquito Creek Multi-Benefit Project
Menlo Park, Palo Alto, & East Palo Alto, CA
April 2020



Tree No.	Species	Trunk Diameter (in.)	Protected Tree?	Condition 1=poor 5=excellent	Suitability for Preservation	Comments
75	Coast live oak	9,9	Yes	4	High	Remove
76	Glossy privet	8,7		2	Low	Remove
77	Coast live oak	18,17	Yes	4	High	Remove
78	Olive	7,7	No	3	Moderate	Remove
79	Coast live oak	36	Yes	4	High	Remove
80	Arroyo willow	10,9,8,6	Yes	3	Low	Remove
81	Coast live oak	3,3,3	No	3	Moderate	Remove
82	California bay	5,5,5,4,4,4, ,3,3,	No	3	Low	Remove
83	Toyon	4,4,2	No	1	Low	Remove
84	Portugal laurel	8,3,3,2,2	No	1	Low	Remove
85	Coast live oak	29,18	Yes	4	High	Remove
86	Coast live oak	12,12	Yes	4	High	Remove
87	Coast live oak	18	Yes	2	Low	Remove
88	Coast live oak	5,5	No	1	Low	Remove
89	Coast live oak	26	Yes	3	Moderate	Remove
90	Coast live oak	16	Yes	3	Moderate	Remove
91	Coast live oak	16	Yes	3	Moderate	Remove
92	Coast live oak	17	Yes	3	Moderate	Remove
93	Coast live oak	6	No	1	Low	Remove
94	Coast live oak	16	Yes	3	Moderate	Remove
95	Coast live oak	6	No	2	Low	Remove
96	Coast live oak	20	Yes	2	Low	Remove
97	Coast live oak	20	Yes	3	Moderate	Remove
98	Coast live oak	9	No	3	Moderate	Remove
99	Coast live oak	6,6	No	3	Moderate	Remove
100	Coast live oak	8,7,6	No	3	Moderate	Remove
101	Coast live oak	18	Yes	4	High	Remove
102	Coast live oak	6	No	3	Low	Remove
103	Coast live oak	5	No	2	Low	Remove
104	Coast live oak	10	No	4	Moderate	Remove
105	Coast live oak	12,6	Yes	3	Moderate	Remove
106	Coast live oak	6	No	3	Moderate	Remove
107	Coast live oak	7	No	4	Moderate	Remove
108	Coast live oak	12,4	Yes	3	Moderate	Remove
109	Coast live oak	11	No	3	Moderate	Remove
110	Elderberry	9,7	No	2	Low	Preserve
111	Coast live oak	14,12,10	Yes	4	High	Preserve
112	Coast live oak	18	Yes	4	Moderate	Preserve

Preliminary Tree Disposition

San Francisquito Creek Multi-Benefit Project
Menlo Park, Palo Alto, & East Palo Alto, CA
April 2020



Tree No.	Species	Trunk Diameter (in.)	Protected Tree?	Condition 1=poor 5=excellent	Suitability for Preservation	Comments
113	Coast live oak	17	Yes	4	High	Preserve
114	Coast live oak	7	No	3	Low	Preserve
115	California buckeye	4,2,2,2	No	3	Low	Preserve
116	California buckeye	4,4,3	No	3	Low	Preserve
117	California buckeye	4,4,4	No	4	Moderate	Preserve
118	Coast live oak	13,8	Yes	3	Moderate	Preserve
119	California bay	22,18,6	Yes	1	Low	Preserve
120	Bigleaf maple	5	No	2	Low	Preserve
121	California bay	5,4	No	3	Low	Preserve
122	California bay	5	No	1	Low	Preserve
123	California bay	18,18	Yes	1	Low	Preserve
124	Coast live oak	10,8	Yes	3	Low	Preserve
125	White ash	10,8,6	No	3	Low	Preserve
126	Bigleaf maple	4	No	4	Moderate	Preserve
127	Coast live oak	7,7	No	3	Moderate	Preserve
128	Bigleaf maple	5	No	3	Moderate	Preserve
129	Coast live oak	4,1	No	4	Moderate	Preserve
130	Coast live oak	21	Yes	4	Moderate	Preserve
131	Coast live oak	33	Yes	4	Moderate	Preserve
132	Coast live oak	20	Yes	3	Moderate	Preserve
133	California buckeye	17,3,2,2	Yes	3	Moderate	Preserve
134	Coast live oak	36	Yes	4	High	Preserve
135	White ash	14,12,12,10	Yes	3	Moderate	Preserve
136	Bigleaf maple	4	No	3	Moderate	Preserve
137	Coast live oak	6	No	3	Moderate	Preserve
138	Coast live oak	7	No	3	Low	Preserve
139	Coast live oak	20	Yes	3	Moderate	Preserve
140	Coast live oak	18,8	Yes	3	Moderate	Preserve
141	Coast live oak	5	No	3	Moderate	Preserve
142	Coast live oak	11,11,10	Yes	4	High	Preserve
143	Coast live oak	7,7,6	No	3	Moderate	Preserve
144	White ash	10,6,6	No	1	Low	Remove
145	Elderberry	15,15,10	Yes	3	Moderate	Preserve
146	California buckeye	6,5,4,4,4,2	No	4	Moderate	Preserve
147	Coast live oak	7,7	No	3	Moderate	Preserve
148	Coast live oak	28	Yes	5	High	Preserve
149	Loquat	4,2	No	3	Low	Remove

Preliminary Tree Disposition

San Francisquito Creek Multi-Benefit Project
Menlo Park, Palo Alto, & East Palo Alto, CA
April 2020



Tree No.	Species	Trunk Diameter (in.)	Protected Tree?	Condition 1=poor 5=excellent	Suitability for Preservation	Comments
150	Japanese privet	8,8,8	No	2	Low	Remove
151	Sawleaf zelkova	11	No	3	Moderate	Remove
152	Brazilian pepper	7,6,6	No	2	Low	Remove
153	Japanese privet	9,4	No	3	Low	Remove
154	Japanese privet	7	No	3	Low	Remove
155	Japanese privet	4,4,4	No	3	Low	Remove
156	Olive	17	No	4	Moderate	Remove
157	Coast live oak	30	Yes	4	High	Remove
158	Coast live oak	21	Yes	4	High	Remove
159	Coast live oak	17	Yes	3	Moderate	Remove
160	Japanese privet	6,4,3,3	No	3	Low	Remove
161	Japanese privet	8	No	3	Moderate	Remove
162	Coast live oak	10,8	Yes	3	Low	Remove
163	Coast live oak	9	No	2	Low	Remove
164	Japanese privet	7,5,4,4	No	3	Low	Remove
165	Coast live oak	27	Yes	4	High	
166	Camphor	14	No	2	Low	
167	California buckeye	35,27,18	Yes	4	High	
168	Japanese privet	7,7	No	3	Low	
169	Australian bush cherry	17	Yes	3	Moderate	
170	California bay	36,13,13	Yes	1	Low	
171	Red flowering gum	16	Yes	3	Low	
172	Blue atlas cedar	22	Yes	2	Low	
173	Coast live oak	4	No	2	Low	
174	Portugal laurel	7	No	2	Low	
175	Coast live oak	8	No	3	Low	Preserve
176	Coast live oak	11	No	3	Low	Preserve
177	Coast live oak	12	Yes	3	Low	Preserve
178	Coast live oak	12	Yes	3	Moderate	Preserve
179	Coast live oak	9	No	2	Low	Preserve
180	Coast live oak	16	Yes	4	Moderate	Preserve
181	Coast live oak	18	Yes	4	High	Preserve
182	Coast live oak	4	No	3	Low	Preserve
183	Coast live oak	12	Yes	3	Moderate	Preserve
184	Coast live oak	11,11,11	Yes	3	Moderate	Preserve
185	Coast live oak	11	No	3	Moderate	Preserve
186	Coast live oak	25	Yes	4	High	Preserve
187	California bay	13,10,5,5	No	3	Moderate	Preserve

Preliminary Tree Disposition

San Francisquito Creek Multi-Benefit Project
Menlo Park, Palo Alto, & East Palo Alto, CA
April 2020



Tree No.	Species	Trunk Diameter (in.)	Protected Tree?	Condition 1=poor 5=excellent	Suitability for Preservation	Comments
188	Tree of heaven	11	No	2	Low	Preserve
189	Coast live oak	15,10	Yes	3	Moderate	Preserve
190	Coast live oak	12	Yes	3	Moderate	Preserve
191	Coast live oak	9	No	3	Moderate	Preserve
192	California bay	6,4,2	No	3	Low	Preserve
193	Coast live oak	6	No	2	Low	Preserve
194	Coast live oak	11	No	4	Moderate	Preserve
195	Coast live oak	11	No	3	Moderate	Preserve
196	Coast live oak	11	No	3	Low	Preserve
197	Coast live oak	15	Yes	4	Moderate	Preserve
198	Coast live oak	5	No	1	Low	Preserve
199	Coast live oak	6,3	No	3	Moderate	Preserve
200	Coast live oak	12	Yes	3	Low	Preserve
201	River she-oak	12	No	3	Low	Preserve
202	Coast live oak	8	No	2	Low	Preserve
203	Coast live oak	7	No	3	Low	Preserve
204	Coast live oak	19	Yes	2	Low	Preserve
205	Coast live oak	10,6	Yes	2	Low	Preserve
206	Coast live oak	8	No	3	Moderate	Preserve
207	California bay	6,5	No	2	Low	Preserve
208	Coast live oak	11	No	3	Moderate	Preserve
209	Coast live oak	11,10	Yes	3	Moderate	Preserve
210	Coast live oak	6,6	No	3	Low	Preserve
211	Coast live oak	7	No	3	Low	Preserve
212	Coast live oak	10	No	3	Low	Preserve
213	Coast live oak	13	Yes	3	Moderate	Preserve
214	Coast live oak	6	No	1	Low	Preserve
215	Coast live oak	15	Yes	3	Moderate	Preserve
216	Coast live oak	15	Yes	3	Low	Preserve
217	Coast live oak	17	Yes	2	Low	Preserve
218	Elderberry	18	No	2	Low	Preserve
219	Coast live oak	18	Yes	3	Low	Preserve
220	Coast live oak	23	Yes	4	High	Preserve
221	Coast live oak	16	Yes	4	High	Preserve
222	California buckeye	7,6,5,4	No	2	Low	Preserve
223	Coast live oak	14,12,12	Yes	3	Low	Preserve
224	Coast live oak	14	Yes	3	Low	Preserve
225	Coast live oak	22	Yes	4	Moderate	Preserve
226	Coast live oak	25	Yes	3	Low	Preserve

Preliminary Tree Disposition

San Francisquito Creek Multi-Benefit Project
Menlo Park, Palo Alto, & East Palo Alto, CA
April 2020



Tree No.	Species	Trunk Diameter (in.)	Protected Tree?	Condition 1=poor 5=excellent	Suitability for Preservation	Comments
227	Coast live oak	23	Yes	3	Low	Preserve
228	Coast live oak	27	Yes	3	Low	Preserve
229	California bay	6,4	No	3	Low	Preserve
230	California buckeye	7	No	3	Low	Preserve
231	Boxelder	11	No	1	Low	Preserve
232	Elderberry	10,4	No	1	Low	Preserve
233	Elderberry	6	No	1	Low	Preserve
234	Elderberry	7,7	No	1	Low	Preserve
235	California pepper	12,6	No	1	Low	Preserve
236	Blue gum	42	Yes	4	Moderate	Preserve
237	Coast live oak	24	Yes	4	Moderate	Preserve
238	Bailey acacia	14	No	3	Moderate	Preserve
239	Fremont cottonwood	9	No	3	Low	Preserve
240	White ash	5	No	2	Low	Preserve
241	Blackwood acacia	8	No	2	Low	Preserve
242	Coast live oak	6	No	4	Moderate	Preserve
243	Blue gum	72,30,28,2 2	Yes	4	Moderate	Preserve
244	Bailey acacia	16	Yes	1	Low	Remove
245	Bailey acacia	6,5,4,4,3	No	1	Low	Remove
246	Bailey acacia	11,5	Yes	3	Low	Remove
247	Blue gum	6,4	No	3	Low	Remove
248	Bailey acacia	7,6,5,5,4,4	No	3	Low	Remove
249	Fremont cottonwood	5	No	4	Moderate	Remove
250	Yellow willow	5,4,4,3	No	3	Moderate	Remove
251	Bailey acacia	15	Yes	2	Low	Preserve
252	Fremont cottonwood	7	No	3	Moderate	Remove
253	Bailey acacia	6,5	No	2	Low	Remove
254	Bailey acacia	11	No	2	Low	Remove
255	Bailey acacia	20	Yes	1	Low	Remove
256	Bailey acacia	11	No	2	Low	Remove
257	Bailey acacia	6,5	No	2	Low	Remove
258	Bailey acacia	15,9	Yes	1	Low	Remove
259	Yellow willow	7	No	3	Moderate	Remove
260	White ash	7,7,6,6,5,5	No	3	Moderate	Remove

Preliminary Tree Disposition

San Francisquito Creek Multi-Benefit Project
Menlo Park, Palo Alto, & East Palo Alto, CA
April 2020



Tree No.	Species	Trunk Diameter (in.)	Protected Tree?	Condition 1=poor 5=excellent	Suitability for Preservation	Comments
261	California pepper	9,7	No	1	Low	Remove
262	Italian buckthorn	6,5	No	2	Low	Remove
263	Bailey acacia	13	No	1	Low	Remove
264	Blue gum	84	Yes	5	High	Remove
265	Fremont cottonwood	14,12	No	3	Moderate	Remove
266	Coast live oak	7	No	3	Moderate	Remove
267	Coast live oak	13	Yes	3	Moderate	Remove
268	Coast live oak	8	No	2	Low	Remove
269	Coast live oak	15	Yes	4	Moderate	Remove
270	Canary Island date palm	36	Yes	4	Moderate	Remove
271	Coast live oak	14	Yes	3	Moderate	Remove
272	Coast live oak	8	No	3	Low	Remove
273	Coast live oak	12	Yes	3	Low	
274	Coast live oak	13	Yes	3	Low	
275	Coast live oak	9	No	4	High	Preserve
276	Coast live oak	15	Yes	5	High	Preserve
277	Myoporum	12,7,6,6	Yes	2	Low	Preserve
278	Myoporum	8,7,6	No	2	Low	Preserve
279	Coast live oak	15,12	Yes	4	High	Remove
280	Elderberry	13,12,10,8, ,8,6,6	Yes	3	Low	Preserve
281	Myoporum	9,6	No	2	Low	Preserve
282	Elderberry	15,12,12,1 2,8,8,8,8,6, ,6,6	Yes	2	Low	Preserve
283	Coast redwood	16	Yes	5	High	Preserve
284	Coast live oak	30,24,18,1 8	Yes	4	High	Preserve
285	Coast live oak	36,20,12	Yes	4	High	
286	Chinese elm	17	No	4	Moderate	
287	Chinese elm	12	No	4	High	
288	Incense cedar	18	No	4	High	
289	London plane	28	No	3	Low	
290	Victorian box	9,8,5	No	3	Low	
291	Canary Island date palm	36	No	4	Moderate	
292	Coast live oak	23	Yes	4	Moderate	Preserve
293	Deodar cedar	29	No	4	Moderate	Preserve
294	Deodar cedar	17	No	3	Moderate	Preserve

Preliminary Tree Disposition

San Francisquito Creek Multi-Benefit Project
Menlo Park, Palo Alto, & East Palo Alto, CA
April 2020



Tree No.	Species	Trunk Diameter (in.)	Protected Tree?	Condition 1=poor 5=excellent	Suitability for Preservation	Comments
295	California buckeye	24,22,22	No	3	Moderate	Preserve
296	Blue gum	31	No	4	Moderate	Preserve
297	Blue gum	43	No	3	Moderate	Preserve
298	Plum	6,6,6,5,54, 4	No	3	Low	Preserve
299	California bay	9	No	4	Moderate	Preserve
300	California bay	7,6	No	3	Moderate	Preserve
301	Elderberry	12,11	No	2	Low	Preserve
302	Blue gum	14	No	1	Low	Preserve
303	Coast live oak	11,9	Yes	3	Moderate	
304	Elderberry	13,10	No	3	Moderate	
305	Plum	4,3,3,3,2,2 ,1,1	No	3	Low	
306	Coast live oak	4	No	4	High	
307	Southern live oak	4	No	2	Low	
308	Victorian box	9,6	No	3	Moderate	
309	Victorian box	6,5	No	1	Low	
310	Victorian box	9,7	No	2	Low	
311	Victorian box	9,6	No	2	Low	
312	California bay	56,47	No	3	Low	
313	California bay	5	No	3	Moderate	
314	California bay	12	No	2	Low	Preserve
315	California bay	8	No	4	Moderate	Preserve
316	California bay	8	No	4	Moderate	Preserve
317	California bay	7	No	4	Moderate	Preserve
318	California bay	7	No	4	Moderate	Preserve
319	Blackwood acacia	21	No	3	Low	Preserve
320	Elderberry	10,10	No	3	Moderate	Preserve
321	Coast live oak	12	Yes	1	Low	Preserve
322	Blue gum	24,15	No	2	Low	Preserve
323	California bay	6	No	3	Moderate	Preserve
324	California bay	8	No	4	Moderate	Preserve
325	Blue gum	39	No	3	Moderate	Preserve
326	California bay	6	No	2	Low	Preserve
327	Victorian box	16,9,8,6	No	4	Moderate	Preserve
328	California bay	8	No	3	Low	Preserve
329	English holly	8	No	3	Moderate	Preserve
330	Blackwood acacia	13,9	No	3	Low	Preserve
331	Elderberry	32	No	3	Low	Preserve

Preliminary Tree Disposition

San Francisquito Creek Multi-Benefit Project
Menlo Park, Palo Alto, & East Palo Alto, CA
April 2020



Tree No.	Species	Trunk Diameter (in.)	Protected Tree?	Condition 1=poor 5=excellent	Suitability for Preservation	Comments
332	California black walnut	13	No	2	Low	Preserve
333	Coast live oak	15	Yes	3	Moderate	Preserve
334	Coast live oak	15	Yes	3	Moderate	Preserve
335	California black walnut	15,13,12,8,8,6	No	1	Low	Preserve
336	Blue gum	51,14	No	3	Low	Preserve
337	Blue gum	48	No	2	Low	Preserve
338	California black walnut	13,12	No	1	Low	Preserve
339	Coast live oak	9	No	4	High	Preserve
340	Coast live oak	7	No	3	Low	Preserve
341	California buckeye	6	No	2	Low	Preserve
342	Purpleleaf plum	12	No	1	Low	Preserve
343	California black walnut	9,7,6	No	2	Low	Preserve
344	Fremont cottonwood	21	No	2	Low	Preserve
345	California black walnut	33,31	No	1	Low	Preserve
346	California buckeye	15,15,14	No	3	Low	Preserve
347	Coast redwood	36	Yes	3	Moderate	Preserve
348	California black walnut	21	No	3	Low	Preserve
349	California bay	13,4	No	3	Moderate	Preserve
350	California buckeye	6,6,6,4	No	3	Low	Preserve
351	California buckeye	12,9	No	4	High	Preserve
352	California black walnut	32,17	No	1	Low	Preserve
353	Loquat	8	No	4	High	Preserve
354	Loquat	5,3	No	3	Moderate	Preserve
355	Blackwood acacia	33	No	3	Low	Preserve
356	Blackwood acacia	15	No	3	Low	Preserve
357	Carolina cherry laurel	5	No	3	Low	Preserve
358	Carolina cherry laurel	10	No	3	Moderate	Preserve
359	California bay	19,16,9,9,5	No	1	Low	Preserve
360	Chinese elm	13,10,8	No	3	Low	Preserve
361	Blue gum	25	No	4	High	Preserve

Preliminary Tree Disposition

San Francisquito Creek Multi-Benefit Project
Menlo Park, Palo Alto, & East Palo Alto, CA
April 2020



Tree No.	Species	Trunk Diameter (in.)	Protected Tree?	Condition 1=poor 5=excellent	Suitability for Preservation	Comments
362	California bay	24,13,12,5	No	3	Low	Preserve
363	California buckeye	4,3,3	No	3	Low	Preserve
364	Monterey pine	30	No	3	Low	Preserve
365	Monterey pine	18	No	3	Low	Preserve
366	California buckeye	7,5	No	3	Moderate	Preserve
367	Deodar cedar	14	No	3	Moderate	Preserve
368	California buckeye	18,15,15,1 4	No	3	Low	Preserve
369	Yellow willow	6,6,5,5,4,4 ,2,2	No	3	Low	Preserve
370	White ash	4,2	No	3	Low	Preserve
371	Yellow willow	9,7,6,5,5,4	No	3	Low	Preserve
372	Yellow willow	11,6,5	No	3	Low	Preserve
373	Coast live oak	8,4	No	3	Moderate	Preserve
374	Monterey pine	13	No	3	Moderate	Preserve
375	Monterey pine	20	No	3	Moderate	Preserve
376	Monterey pine	13	No	2	Low	Preserve
377	White ash	5,4	No	3	Low	Preserve
378	California buckeye	7	No	3	Moderate	Preserve
379	Unknown	9	No	0		Preserve
380	Carolina cherry laurel	7,6,6,5,4	No	3	Low	Preserve
381	White ash	4,4,4	No	2	Low	Preserve
382	Coast live oak	28	Yes	3	Moderate	Preserve
383	Blue gum	36,24	No	1	Low	Preserve
384	Blue gum	48	No	3	Low	Preserve
385	Blue gum	50	No	3	Moderate	Preserve
386	Blue gum	35	No	3	Moderate	Preserve
387	Blue gum	38	No	3	Low	Preserve
388	Coast live oak	12	Yes	3	Low	Preserve
389	Japanese privet	7,5,5,4,4	No	3	Low	Preserve
390	Coast live oak	15	Yes	4	Moderate	Preserve
391	Tobira	10,9,5,4,4	No	4	Moderate	Preserve
392	White ash	5,4,4,3,3	No	2	Low	Preserve
393	Little leaf linden	11,10	No	2	Low	Preserve
394	Coast live oak	36	Yes	2	Low	Preserve
395	Japanese privet	4,3,2	No	3	Low	Preserve
396	Yellow willow	8,6,5,4,4	No	3	Moderate	Remove

Preliminary Tree Disposition

San Francisquito Creek Multi-Benefit Project
Menlo Park, Palo Alto, & East Palo Alto, CA
April 2020



Tree No.	Species	Trunk Diameter (in.)	Protected Tree?	Condition 1=poor 5=excellent	Suitability for Preservation	Comments
397	Blackwood acacia	25,11	No	2	Low	Preserve
398	California buckeye	9,6,6,4,3,3	No	2	Low	Remove
399	Yellow willow	20	No	2	Low	Preserve
400	Coast live oak	20,18	Yes	4	High	Preserve
401	Coast live oak	5	No	3	Moderate	Preserve
402	Coast live oak	14	Yes	3	Moderate	Preserve
403	Yellow willow	5,4,3,3	No	2	Low	Preserve
404	Yellow willow	12	No	2	Low	Preserve
405	Yellow willow	11,10,9,7, 7,7,6,5	No	2	Low	Preserve
406	Valley oak	18,15	Yes	4	High	Preserve
407	California black walnut	15	No	3	Low	Preserve
408	Yellow willow	5,4,4	No	1	Low	Preserve
409	California buckeye	27,15	No	4	High	Preserve
410	California buckeye	9,9,8 8,7,7,6,6,5	No	3	Moderate	Preserve
411	Fremont cottonwood	13,12,10	No	3	Low	Preserve
412	Yellow willow	5,5,4,4	No	2	Low	Preserve
413	Coast live oak	13	Yes	4	High	Preserve
414	Coast live oak	10	No	3	Moderate	Preserve
415	Coast live oak	48	Yes	4	Moderate	Preserve
416	Coast live oak	8	No	2	Low	Preserve
417	Coast live oak	9	No	2	Low	Preserve
418	Coast live oak	32	Yes	3	Moderate	Preserve
419	Coast live oak	19,8	Yes	3	Moderate	Preserve
420	Coast live oak	14	Yes	3	Moderate	Preserve
421	California buckeye	6,5	No	2	Low	Preserve
422	Coast live oak	19,17,16	Yes	3	Moderate	Preserve
423	Coast live oak	20,17,12	Yes	3	Moderate	Preserve
424	Coast live oak	15	Yes	2	Low	Preserve
425	Coast live oak	50	Yes	4	High	Preserve
426	Coast live oak	36	Yes	3	Moderate	Preserve
427	California buckeye	13,12,10,8 ,6,6	No	3	Moderate	Preserve
428	Coast live oak	10	No	3	Low	Preserve
429	Fremont cottonwood	13,7	Yes	3	Low	Preserve

Preliminary Tree Disposition

San Francisquito Creek Multi-Benefit Project
Menlo Park, Palo Alto, & East Palo Alto, CA
April 2020



Tree No.	Species	Trunk Diameter (in.)	Protected Tree?	Condition 1=poor 5=excellent	Suitability for Preservation	Comments
430	Blue gum	36,25,24,14	Yes	3	Moderate	Remove
431	Yellow willow	10	No	3	Low	Remove
432	Coast live oak	10	No	3	Moderate	Remove
433	Blue gum	24,16,5	Yes	3	Low	Remove
434	Blue gum	20	Yes	2	Low	Remove
435	Blue gum	36	Yes	3	Moderate	Remove
436	Yellow willow	6,4,4		2	Low	Remove
437	Yellow willow	6,4,4		1	Low	Remove
438	Blackwood acacia	5	No	3	Moderate	Remove
439	Fremont cottonwood	16	Yes	1	Low	Remove
440	Fremont cottonwood	18	Yes	2	Low	Remove
441	Fremont cottonwood	13	Yes	2	Low	Remove
442	Fremont cottonwood	36,24,20	Yes	3	Low	Remove
443	Fremont cottonwood	20	Yes	1	Low	
444	Boxelder	10,10,9,7,6,5,2	Yes	2	Low	
445	Yellow willow	9,6,5,4	No	1	Low	
446	Yellow willow	5,5,5,5,4	No	2	Low	
447	Yellow willow	4,4,4		2	Low	
448	California black walnut	14	Yes	2	Low	
449	California black walnut	4,4,4	No	2	Low	
450	California black walnut	16,12	Yes	2	Low	Remove
451	Coast live oak	42	Yes	4	High	Remove
452	California black walnut	12	No	2	Low	Remove
453	Blue gum	26	Yes	3	Low	Remove
454	Blue gum	16	Yes	2	Low	Remove
455	Blue gum	60	Yes	3	Moderate	
456	Blue gum	20	Yes	2	Low	
457	California black walnut	5	No	1	Low	
458	Blackwood acacia	11,8,8	Yes	2	Low	
459	Blackwood acacia	14,12	Yes	2	Low	

Preliminary Tree Disposition

San Francisquito Creek Multi-Benefit Project
Menlo Park, Palo Alto, & East Palo Alto, CA
April 2020



Tree No.	Species	Trunk Diameter (in.)	Protected Tree?	Condition 1=poor 5=excellent	Suitability for Preservation	Comments
460	White ash	6,4	No	2	Low	
461	Blue gum	36	Yes	4	High	
462	Blue gum	35,28,19,1 8,12	Yes	4	High	Remove
463	Yellow willow	5	No	2	Low	Remove
464	Blue gum	36	Yes	4	High	Remove
465	Blue gum	48	Yes	3	Moderate	Remove
466	Coast live oak	8	No	3	Moderate	Remove
467	Blue gum	13	Yes	3	Low	Remove
468	Blue gum	40	Yes	3	Low	Remove
469	Blue gum	12		3	Low	Remove
470	Coast live oak	7	No	3	Low	Remove
471	Coast live oak	17	Yes	3	Low	Remove
472	Yellow willow	4,3,2,2	No	3	Low	Remove
473	California black walnut	6	No	1	Low	Remove
474	Yellow willow	11,7	No	2	Low	Remove
475	Coast live oak	13	Yes	2	Low	Remove
476	White ash	17	No	2	Low	Remove
477	Bailey acacia	13	Yes	3	Low	
478	Bailey acacia	7	No	3	Moderate	
479	California buckeye	5,4	No	4	High	
480	Blackwood acacia	10,4	Yes	3	Low	
481	Blackwood acacia	7 and smaller	No	3	Low	
482	Blackwood acacia	17,14,11	Yes	3	Low	
483	Blackwood acacia	9	No	1	Low	Remove
484	Blackwood acacia	19,18	Yes	3	Low	
485	California bay	17,8	Yes	3	Low	
486	Coast live oak	9	No	1	Low	
487	Elderberry	7,6,5,4,4	No	2	Low	
488	Coast live oak	8	No	4	High	Remove
489	California buckeye	8,6,6,6,5,5 ,4,4,4	No	3	Moderate	
490	California black walnut	34	Yes	3	Moderate	
491	California buckeye	9,9,8,8,7,3	Yes	3	Low	
492	California black walnut	9,8,8	No	3	Low	
493	California buckeye	22,16	Yes	3	Low	

Preliminary Tree Disposition

San Francisquito Creek Multi-Benefit Project
Menlo Park, Palo Alto, & East Palo Alto, CA
April 2020



Tree No.	Species	Trunk Diameter (in.)	Protected Tree?	Condition 1=poor 5=excellent	Suitability for Preservation	Comments
494	California black walnut	36	Yes	2	Low	
495	California buckeye	7,6,6	No	2	Low	
496	California buckeye	5,4	No	3	Low	
497	California buckeye	7,5,5	No	3	Low	
498	Coast live oak	17	Yes	3	Low	
499	California black walnut	24	Yes	2	Low	
500	California black walnut	18,12	Yes	1	Low	
501	Coast live oak	56	Yes	4	Moderate	
502	California black walnut	18	Yes	3	Low	
503	California black walnut	8,4	No	2	Low	Remove
504	California bay	42	Yes	3	Low	Remove
505	Coast live oak	5,5,5,5	No	3	Moderate	Remove
506	Blue gum	12	No	2	Low	Remove
507	Coast live oak	14,12,8	Yes	3	Low	Remove
508	California buckeye	8	No	2	Low	Remove
509	Coast live oak	8,5,4,4	No	4	High	Remove
510	Coast live oak	12,4	Yes	4	Moderate	Remove
511	California buckeye	36,26	Yes	3	Moderate	Remove
512	Coast live oak	18,12,4	Yes	2	Low	
513	California buckeye	14,11,8	Yes	2	Low	
514	California buckeye	17,15,15,15	Yes	3	Moderate	
515	Coast live oak	18	Yes	3	Low	
516	Blue gum	36	Yes	4	Moderate	
517	California black walnut	30	Yes	3	Low	
518	Coast live oak	6,4	No	3	Moderate	
519	Elderberry	9,8	No	3	Moderate	
520	Elderberry	12	No	1	Low	
521	California buckeye	6,5	No	3	Low	
522	Coast live oak	18	Yes	4	High	
523	Fremont cottonwood	7	No	2	Low	
524	Coast live oak	4	No	3	Moderate	
525	Coast live oak	5	No	3	Moderate	
526	Coast live oak	8	No	3	Moderate	

Preliminary Tree Disposition

San Francisquito Creek Multi-Benefit Project
Menlo Park, Palo Alto, & East Palo Alto, CA
April 2020



Tree No.	Species	Trunk Diameter (in.)	Protected Tree?	Condition 1=poor 5=excellent	Suitability for Preservation	Comments
527	Blue gum	56	Yes	3	Moderate	Remove
528	Coast live oak	4	No	2	Low	Remove
529	Blue gum	31	Yes	3	Moderate	Remove
530	Blue gum	36	Yes	4	Moderate	Remove
531	Blue gum	46	Yes	3	Low	Remove
532	Blue gum	27,24,24,20	Yes	4	Moderate	Remove
533	Blue gum	26,24	Yes	3	Moderate	Remove
534	Coast live oak	13	Yes	4	Moderate	Remove
535	California buckeye	6,4,3,3	No	4	Moderate	Remove