

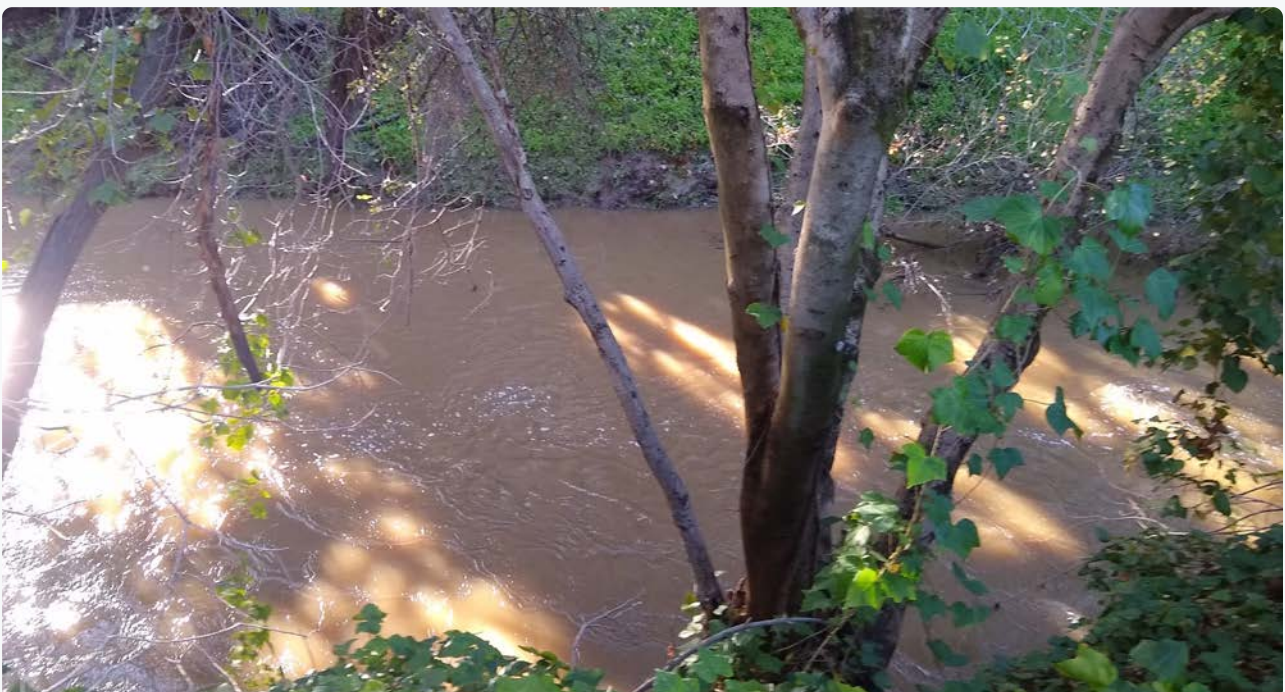


San Francisquito Creek Joint Powers Authority

SFCJPA Spring 2022 Newsletter

Mitigating Flood Risks. Protecting a Shared Natural Treasure.

The San Francisquito Creek Joint Powers Authority (SFCJPA) was formed in 1999 after a serious flooding event in 1998. The SFCJPA leads projects that mitigate the risk of flooding along the San Francisquito Creek and the Bay. The SFCJPA is made up of the cities of East Palo Alto, Palo Alto, Menlo Park, and the San Mateo County Flood and Sea Level Resiliency District and the Santa Clara Valley Water District



Announcing: Creek and Shoreline Project Tours

What: Tour the Creek – See the Reach 1 and 2 San Francisquito Creek flood risk reduction projects. Join us to learn about our completed Reach 1 project and our envisioned Reach 2 bridge and widening project elements to protect residents of Menlo Park, East Palo Alto and Palo Alto from creek flooding.

When: Monday, April 18, 2022. 2:30 P.M. to 5:00 P.M.

Where: We will meet in Palo Alto near the completed Reach 1 project. We will drive to other locations further upstream. Details will be provided to those who RSVP.

This tour is limited to 12 people due to limited parking.

Please RSVP at: rsvp@sfcjpa.org. Please note which tour you would like to attend.

What: Tour the Shore – See the elements of the SAFER Bay Project along the shore of East Palo Alto and Menlo Park. Join us to learn about the anticipated impacts of sea level rise and tidal flooding and our plans to protect and restore marsh areas, protect residents and critical infrastructure through a variety of natural and constructed solutions.

When: Tuesday, April 19, 10 A.M to 12:30 P.M.

Where: We will meet in East Palo Alto at the Cooley Landing parking lot. We will drive to other locations along the shoreline. Details will be provided to those who RSVP.

Please RSVP at: rsvp@sfcjpa.org. Please note which tour you would like to attend.

This tour is limited to 20 people to ensure everyone can hear, and we have time to answer everyone's questions.



Project Updates



Reach 1 Project

Gumplants!

As part of our commitment to marsh restoration associated with the completed [Reach 1 Project](#), the SFCJPA has had more than 420 native marsh gumplants (*Grindelia stricta*) planted in the south-eastern marshes of East Palo Alto. These hardy plants in the aster family provide habitat and food for native mammals, birds, and insects. Native Americans used gumplant to treat lung

problems and skin infections. The plants have been provided and were installed by our partner Grassroots Ecology.

Reach 2 Project

Regulatory Permit Applications

We have been compiling the technical and design details necessary to submit draft regulatory permit applications for the bridge replacements and channel widening, which constitute the [Reach 2 flood risk reduction project](#). This has been a complex process, where we have taken into consideration and done our best to balance the concerns of project neighbors, agency experts, and our design engineers. We anticipate submitting our draft permit applications in early April. At this time, we anticipate construction of the Reach 2 project elements in the 2023 and 2024 construction seasons, assuming all funding and permits come together as anticipated.



SAFER Bay Project Update

Strategy to Advance Flood protection, Ecosystems and Recreation along San Francisco Bay (SAFER Bay) Project, for East Palo Alto and Menlo Park

Coming Soon! Notice of Preparation (NOP) for programmatic CEQA/NEPA

The SFCJPA is preparing to release its Notice of Preparation (NOP) for the necessary environmental reviews for the [SAFER Bay Project](#). We will be conducting Programmatic-level review for the entire Menlo Park and East Palo Alto SAFER Bay project, and Project-level review for the southern-most segments of the project in East Palo Alto. Once the NOP is released, there will be a comment period for public and stakeholder input on the initial scope of the environmental reviews.

We will notify everyone on our distribution list when we release the NOP, and we look forward to your input. Please sign up at this [LINK](#) if you would like to be

added to our SAFER Bay notification list.

SAFER Bay Draft Community Outreach Plan

The SFCJPA is committed to inclusive and effective community engagement throughout the SAFER Bay project. We have created a draft community outreach plan and welcome your input. You can provide input by sending an email to Tess Byler, Sr. Project Manager, at tbyler@sfcjpa.org. The community outreach plan will be a living document, updated throughout the course of the SAFER Bay project – incorporating lessons learned and new opportunities.

Important Information – Avian Influenza – Please Report Sick or Dead Birds

Avian Flu has been confirmed in California in the Central Valley.

Highly pathogenic avian influenza (HPAI) viruses can severely affect human, domestic animal, and wildlife health. Outbreaks of Eurasian lineage highly pathogenic avian influenza viruses have been increasing rapidly in Europe and Asia – and now in the United States – in both domestic poultry and wild birds, since August of 2020.

As you walk or bike in the San Francisquito Creek watershed or along the Bay shore, please be on the lookout for dead and sick birds.

- If you find 5 or more dead waterbirds, gulls, and waterfowl, DO NOT TOUCH them. Take a picture and GPS point on your phone, collector, or any GPS device, and contact me.
- If you find 1 or more dead raptors (hawks), corvids (crows, ravens, jays), or pelicans, DO NOT TOUCH them. Take a picture and GPS point on your phone, collector, or any GPS device, and contact me.
- If you find 2 or more birds in the same location displaying unusual behavior, take a video and contact me.
 - Any bird species with **neurologic signs** such as swimming or walking in circles, lethargy, moving the head in a “jerky” motion, and holding the neck and head in an unusual position (more drastic than simply drooping).

Rachel Tertés (She/Her), USFWS Wildlife Biologist, Don Edwards San Francisco Bay NWR (510) 377-8375 cell <http://www.fws.gov/sfbayrefuges/>
<https://www.facebook.com/SanFranciscoBayNWRComplex>

EVENTS

City of Palo Alto & Environmental Volunteers Citizen Science BioBlitz

Saturday April 2, 10am-1pm for an exciting citizen science bioblitz at the Palo Alto Baylands Nature Preserve! A bioblitz is a snapshot of the plants and animals at a given location during a point in time. [Click here for event details and to sign up](#), and [here to learn more about the Horizontal Levee Pilot Project](#)

Grassroot Ecology Volunteer Events

Open this link for some wonderful ways to get involved in local, hands-on, habitat restoration work, while enjoying the beauty of spring! [Upcoming Events – Grassroots Ecology](#)

National Arbor Day is April 29

This year marks the 150th anniversary of the tree planter's holiday. Our local tree organization, Canopy <https://canopy.org/> has some great upcoming tree events to mark the occasion.

FEMA Risk Rating 2.0 – Insurance Rate Maps

Last fall the SFCJPA hosted a webinar with FEMA, highlighting the new Risk Rating 2.0 program for flood insurance. Since then, FEMA has released an interactive map to describe where flood risks and flood insurance rates have changed under the new FEMA methodologies. The link below lets you search by zip code for average insurance premium changes.

<https://www.arcgis.com/apps/dashboards/d81c4a385def4525a60657df03b7f331>

In the News

[Sea Level to Rise up to a Foot by 2050, Interagency Report Finds – NASA Sea Level Change Portal](#)

“Coastal flooding will increase significantly over the next 30 years because of sea level rise, according to a new report by an interagency sea level rise task force that includes NASA, the National Oceanic and Atmospheric Administration (NOAA), and other federal agencies. Titled [Global and Regional Sea Level Rise Scenarios for the United States](#), the Feb. 15 report concludes that sea level along

U.S. coastlines will rise between 10 to 12 inches (25 to 30 centimeters) on average above today's levels by 2050."

According to recent projections, the west coast may not experience as much sea level rise as other areas, but that doesn't mean we should disregard its potential impacts. Many communities, important infrastructure, and other sites are at risk of inundation over the coming decades. Projects to address these impacts take a long time to plan and implement, which is why the SFCJPA and its member agencies have invested in preparations for future sea level rise.

SFCJPA Board Meetings

Regular board meetings occur on the fourth Thursday of each month.

April 28, 2022 3:30 P.M. – Regular Board Meeting

May 26, 2022, 3:30 P.M. – Regular Board Meeting

June 23, 2022, 3:30 P.M. – Regular Board Meeting

Board meeting agendas and video conference links are posted at least 72 hours before the scheduled meeting on the [SFCJPA website](#).

We have included you in our distribution because you have participated in one or more of our community meetings, your organization or community members may be impacted by the work of the SFCJPA, or you are directly involved in the SFCJPA's projects.

We do not share your contact information with anyone!

Please feel welcome to forward to anyone we may have missed.

You can unsubscribe at the link below.

San Francisquito Creek Joint Powers Authority

2100 Geng Road, Suite 210, Palo Alto
CA 94303 United States

www.sfcjpa.org

You received this email because you signed up on our website or made a purchase from us.

[Unsubscribe](#)



