

# WELCOME

# WINTER SAFETY COMMUNITY EVENT

# GETTING READY FOR WINTER STORMS



SAN FRANCISQUITO CREEK  
JOINT POWERS AUTHORITY



CITY OF  
MENLO PARK



CITY OF  
**PALO  
ALTO**



**OneShoreline**  
Building Solutions for a Changing Climate



**Valley Water**

# Agenda Overview & Housekeeping

Margaret Bruce, Executive Director, San Francisquito Creek Joint Powers Authority

- Spanish language interpretation is available
- In the event of an emergency
- Event agenda overview
- Refreshments
- Bathrooms



SAN FRANCISQUITO CREEK  
JOINT POWERS AUTHORITY

# Welcome and Opening Remarks

**Drew Combs – Menlo Park City Council Member and  
San Francisquito Creek Joint Powers Authority Board Chair**



SAN FRANCISQUITO CREEK  
JOINT POWERS AUTHORITY





# Overarching Public Safety Information

Chief Kenneth Dueker, J.D., Director of Emergency Services, City of Palo Alto



CITY OF  
**PALO  
ALTO**

- Emergency Operations Centers (EOCs)
- The Multi-Agency Coordination group (MAC)
- Preparedness: know your hazards, stay informed, build a kit, get involved.

# How to report a problem

Colin Martorana, Project Manager, OneShoreline

If you see a storm or flooding-related problem, who to contact for each jurisdiction along the creek.





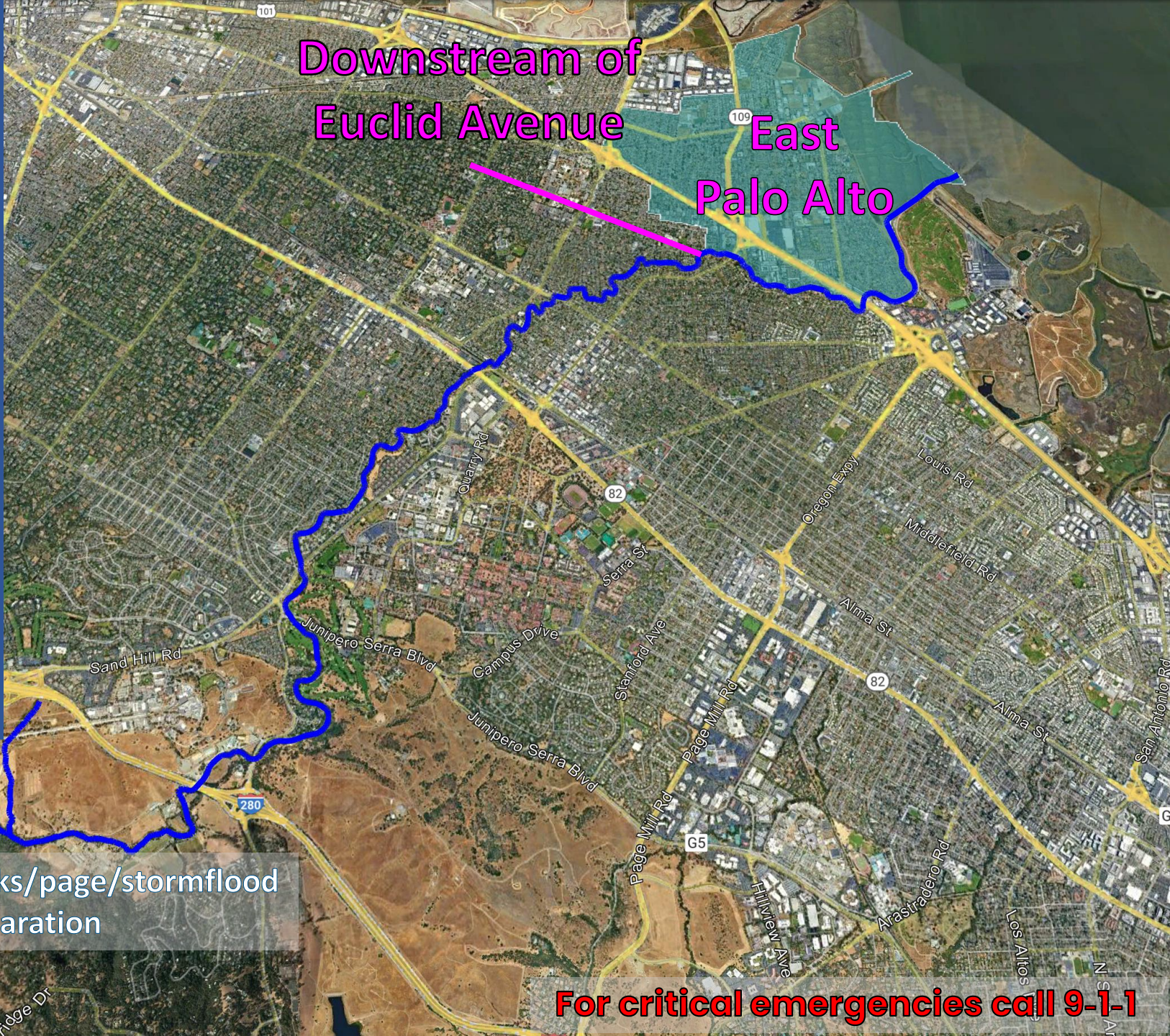
In anticipation of a storm,  
report any hazardous  
conditions to the City East  
Palo Alto, at 650-853-3100

During storms, report  
flooding and storm-related  
hazards to Menlo Fire, at  
650-368-1421

For more info:



[CityofEPA.org/publicworks/page/stormflood-protection-disaster-preparation](https://www.cityofpaloalto.org/publicworks/page/stormflood-protection-disaster-preparation)



**For critical emergencies call 9-1-1**



During storms, report flooding and storm-related hazards to Palo Alto Public Works, at 650-496-6974 during business hours

650-329-2413 after hours.

Prepare, get informed, and track conditions, at:

[CityofPaloAlto.org/StormUpdate](http://CityofPaloAlto.org/StormUpdate)



109 East Palo Alto

Palo Alto

Downstream of Oak Avenue

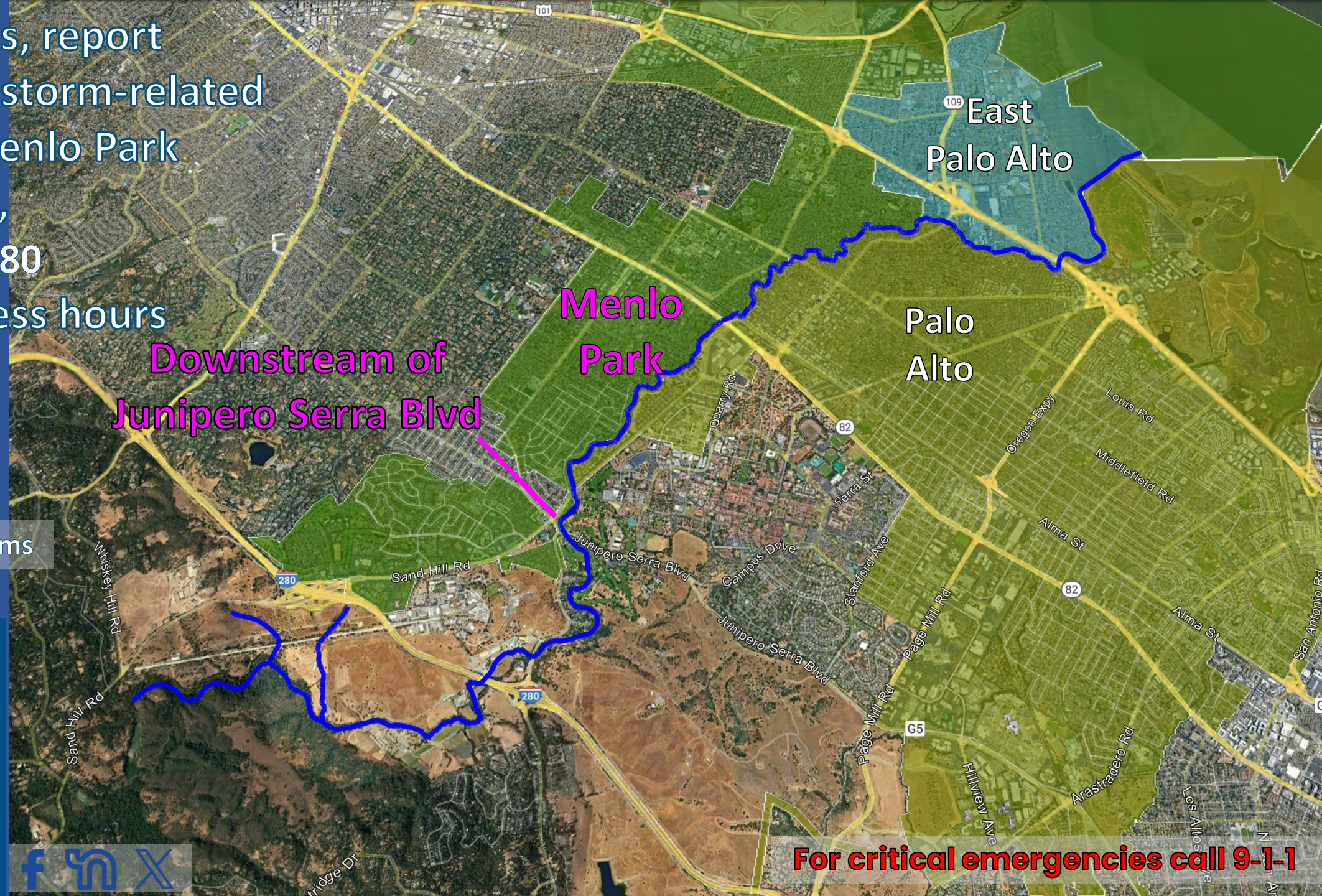
For critical emergencies call 9-1-1





During storms, report  
flooding and storm-related  
hazards to Menlo Park  
Public Works,  
at 650-330-6780  
during business hours  
650-330-6300  
after hours.

[MenloPark.gov/Storms](http://MenloPark.gov/Storms)



**For critical emergencies call 9-1-1**



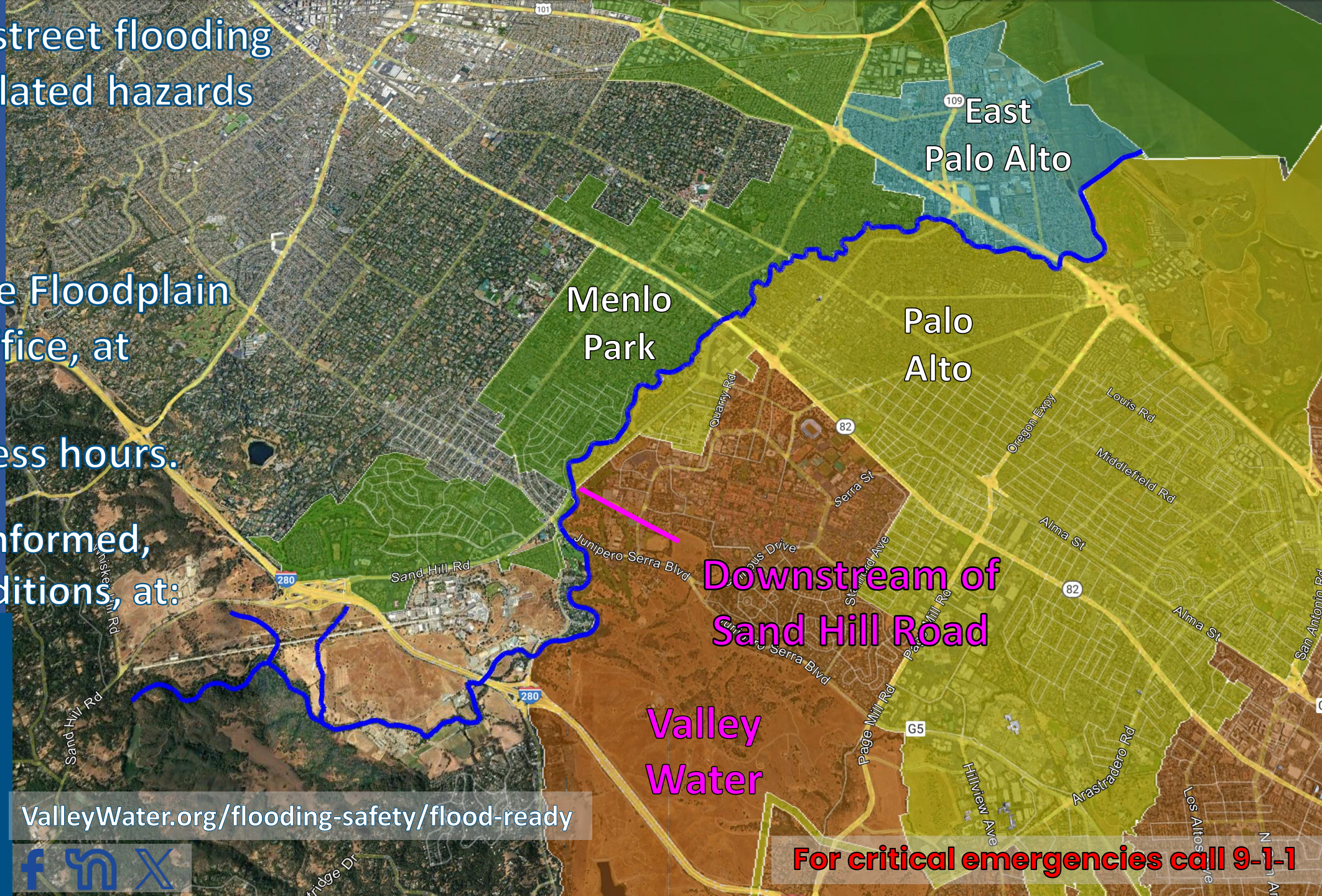
Report local street flooding and storm-related hazards by phone at 408-630-2378

or contact the Floodplain Manager's office, at 408-630-2650 during business hours.

Prepare, get informed, and track conditions, at:



[ValleyWater.org/flooding-safety/flood-ready](http://ValleyWater.org/flooding-safety/flood-ready)



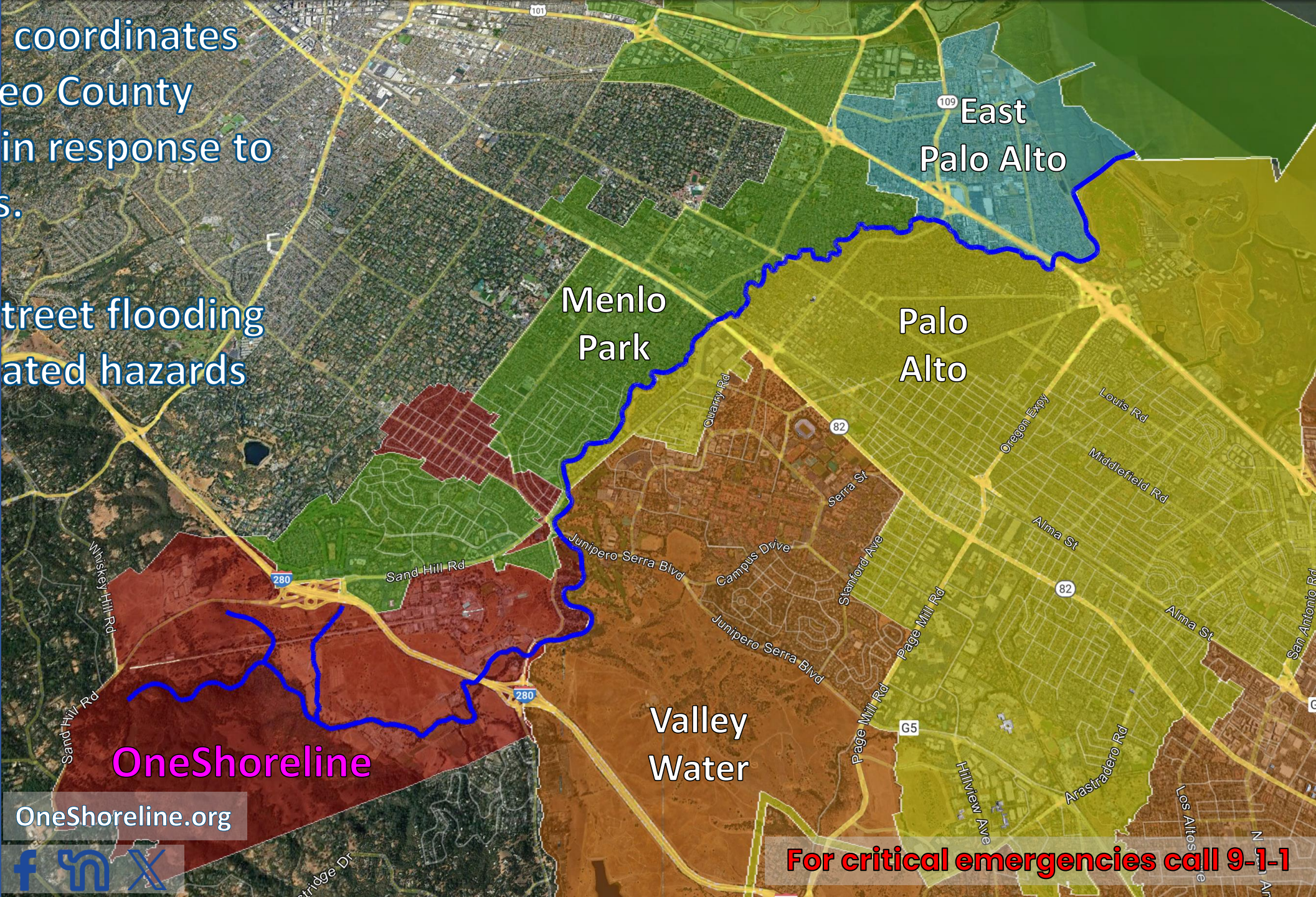
**For critical emergencies call 9-1-1**



OneShoreline coordinates with San Mateo County Public Works in response to storm hazards.

Report local street flooding and storm-related hazards by phone, at 650-844-8310

More info at:



OneShoreline.org



**For critical emergencies call 9-1-1**



# In review: How to report a problem

## **Important Phone Numbers and Websites to Report Storm-Related Hazards**

For critical emergencies call 9-1-1

To report creek or tidal flooding, blocked storm drains, fallen trees, or other storm-related hazards:

**East Palo Alto - 650-368-1421;**

[CityofEPA.org/publicworks/page/stormflood-protection-disaster-preparation](http://CityofEPA.org/publicworks/page/stormflood-protection-disaster-preparation)

**Palo Alto - 650-329-2413;**

[CityofPaloAlto.org/StormUpdate](http://CityofPaloAlto.org/StormUpdate)

**Menlo Park - 650-330-6300;**

[MenloPark.gov/Storms](http://MenloPark.gov/Storms)

**Valley Water - 408-630-2378;**

[ValleyWater.org/flooding-safety/flood-ready](http://ValleyWater.org/flooding-safety/flood-ready)

**OneShoreline - 650-844-8310;**

[OneShoreline.org](http://OneShoreline.org)

**SFCJPA 650-643-1450;**

[SFCJPA.org](http://SFCJPA.org)

**Sign up for official emergency alerts from  
Santa Clara or San Mateo County  
Emergency Management**

<https://www.smcgov.org/node/388760/SMC-Alert>

<https://emergencymanagement.sccgov.org/AlertSCC>



# Storm Monitoring and Resources for more information

Alex Gordon, Assistant Officer, Emergency, Safety and Security Division, Valley Water.

## Storm Monitoring

- Annual stream maintenance and vegetation management
- Continuous monitoring of creek and reservoir levels, and soil saturation
- Continuous monitoring of weather forecast
- Projections for potential flooding
- Participation in San Franciquito Creek Multi-Agency Coordination (SFC MAC)



# Storm Monitoring and Resources for more information

## Resources for More Information

- Flood Ready - <https://www.valleywater.org/flooding-safety/flood-ready>
- Stream and Reservoir gauges - <https://alert.valleywater.org/>
- Sandbags - <https://www.valleywater.org/flooding-safety/flood-ready/sandbags>
- Local Stream gauges - <https://www.cityofpaloalto.org/Departments/Public-Works/Engineering-Services/Creek-Monitor-Cam>
- SFCJPA rain and streamflow gauges - <https://www.sfcjpa.org/rain-and-streamflow-gages>





# SHORT BREAK

Did you put a raffle ticket in the bowl?



# What to do to Protect your Property

Nikki Nagaya, Deputy City Manager,  
City of Menlo Park

1. Know your risk
2. Insure your property and belongings
3. Reduce your risk
  - A. Outside your home
  - B. Inside your home
  - C. When flooding is expected imminently



CITY OF  
MENLO PARK



# What to do to protect your property

## 3. Reduce your risk

### A. Outside your home

- i. Check your gutters, downspouts, remove debris
- ii. Improve lot grading and green spaces to allow water infiltration
- iii. Rain barrels - get a rebate! <https://bawsca.org/consERVE/rebates/barrels>
- iv. Elevate heating, cooling, electrical equipment
- v. Seal cracks and gaps

### B. Inside your home

- i. Protect valuables above flood levels or in watertight containers
- ii. Elevate appliances above the ground floor
- iii. Seal foundation and walls, use flood resistant materials (ceramic tile, vinyl, rubber, metal; not carpet or wood)
- iv. Floodproof basements and crawlspaces
- v. Install drain backflows to prevent sewer back ups

### C. When flooding is expected imminently



# What to do to protect your property

## 3. Reduce your risk

A. Outside your home

B. Inside your home

C. When flooding is expected imminently

- i. Secure items in your yard
- ii. Activate protection devices (close backflow valves, turn on sumps)
- iii. Shut off electricity at the breaker
- iv. Protect valuables, especially on the ground floor
- v. Place sandbags, temporary flood barriers





# Sandbag Demonstration

Mike Wong, Assistant Public Works Director,  
City of Palo Alto



CITY OF  
**PALO  
ALTO**



# Getting Ready to Evacuate – Ready, Set, GO!

Kevin Lewis, Public Works Supervisor,  
City of East Palo Alto

Steps the community should be taking to prepare -

- Go bag
- Family plan
- Stay informed to evacuate properly





# SFCJPA Members – Getting Ready Winter Storms

- Creek Maintenance
- Storm Drain System Maintenance
- Emergency and Public Safety Team Coordination
- Sandbags
- Equipment at Bridges
- Stream Flow Monitoring
- Sediment
- Communications



NATURAL SERVICES  
SAN FRANCISQUITO CREEK  
JOINT POWERS AUTHORITY





**Brief pause for  
RAFFLE!**



