

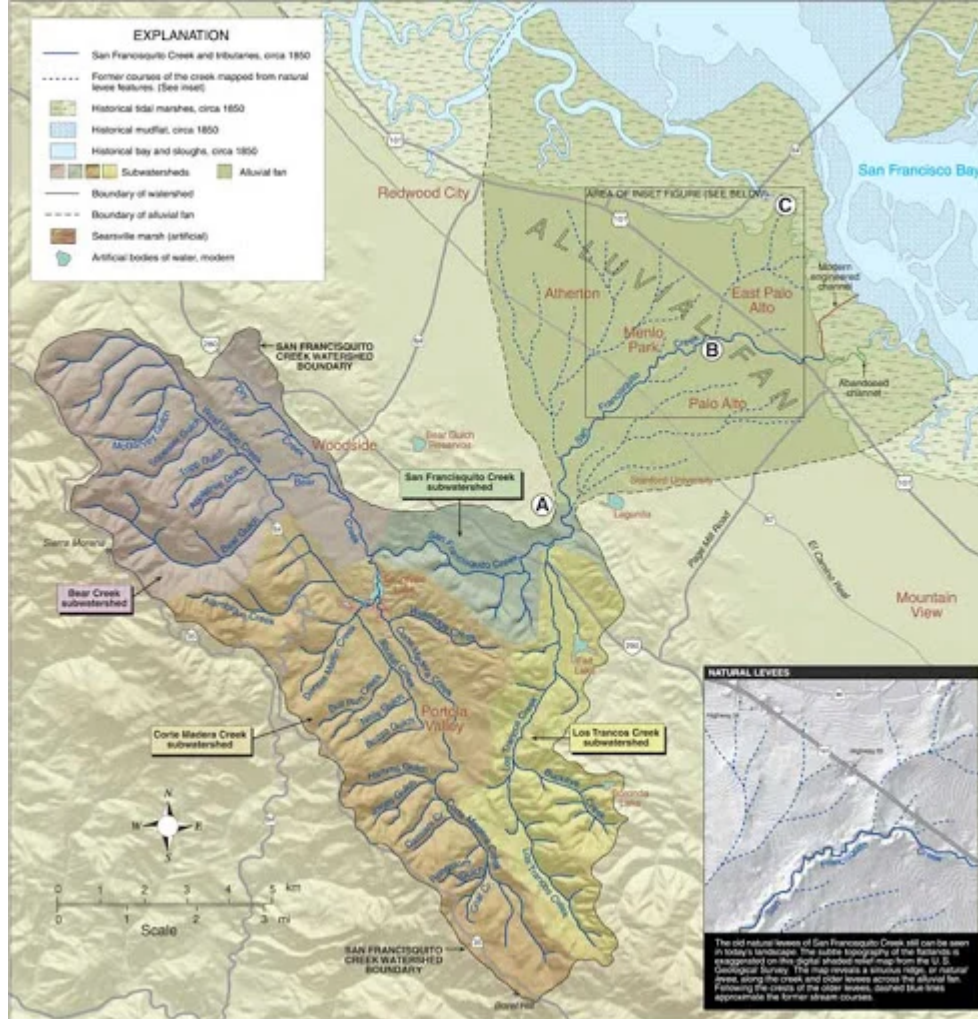


San Francisquito Creek Joint Powers Authority

SFCJPA Winter 2021 Newsletter

Mitigating Flood Risks. Protecting a Shared Natural Treasure.

The San Francisquito Creek Joint Powers Authority (SFCJPA) was formed in 1999 after a serious flooding event in 1998. The SFCJPA leads projects that mitigate the risk of flooding along the San Francisquito Creek and the Bay. The SFCJPA is made up of the cities of East Palo Alto, Palo Alto, Menlo Park, and the San Mateo County Flood and Sea Level Resiliency District and the Santa Clara Valley Water District



Map of the San Francisquito Creek Watershed

Project Updates

Reach 2 Project Update

The SFCJPA continues to make progress on bridge and channel widening design work for the area along San Francisquito Creek between Highway 101 and the Pope-Chaucer Bridge, and the required detailed submittals to regulatory agencies for their approval. The SFCJPA is also working with the Army Corps of Engineers for the channel-widening portion of the Reach 2 project, through their local-district funded CAP 205 program. The Army Corps and the SFCJPA hosted a [NEPA scoping workshop on October 25](#). Comments on the NEPA scoping plan were due on November 30th. The Corps and the SFCJPA are evaluating comments received.



SAFER Bay Project Update

Strategy to Advance Flood protection, Ecosystems and Recreation along San Francisco Bay (SAFER Bay) Project, for East Palo Alto and Menlo Park

The SFCJPA will be releasing a Notice of Preparation for the Programmatic Environmental Impact Report (EIR) for the entire area of the SAFER Bay project, and Project-level EIR for the project segments (called reaches) in East Palo Alto.

With the launch of the EIR process, the SFCJPA will be conducting community outreach to raise awareness of the impacts of sea level rise and tidal flooding, and to gather input from stakeholders. Watch for more information in early 2022.

Bay Adapt

Climate change adaptation work is best done in collaboration and coordination with other community partners. The SFCJPA has a leading role in the East Palo Alto portion and serves as technical lead for Menlo Park portion of [SAFER Bay](#), which will provide sea level rise and tidal flooding protection for the cities of East Palo Alto and Menlo Park. We also coordinate regionally with other organizations throughout the nine-county bay area. The Bay Adapt program is an important framework for our coordination and collaboration. Bay Adapt has developed helpful guiding principles for sea level rise adaptation work in the San Francisco Bay region:

- *Practice Inclusive, Community-Led Governance and Decision Making*
- *Support Socially Vulnerable Communities*
- *Solve Collaborative Problems Together*
- *Don't Hold Back Early Movers but Play the Long Game*

Bay Adapt has developed a Joint Platform, a consensus-based strategy comprised of 9 actions and 21 tasks that will protect people and the natural and built environments from rising sea levels.

Learn more about the Bay Adapt program on their [website](#).

EVENTS

Grassroots Ecology will be leading a King Tides Nature Walk in Spanish

December 4, 10:30 A.M. – 12:30 P.M. Register at the following link:

[**Caminata Naturalista: Grandes Mareas en Cooley Landing.**](#)



Winter Preparedness

Even in a drought, heavy rains can bring high-waters.

The SFCJPA coordinates with its member cities and regional emergency response organizations, providing real-time stream flow information to inform responders of stream conditions.

Flooding can impact your community from high stream flows or tidal flooding. Develop a family or business preparedness plan and sign up for emergency alerts at:

<https://cmo.smcgov.org/smc-alert> – for San Mateo County

<https://emergencymanagement.sccgov.org/AlertSCC> – for Santa Clara County

Good resources for emergency planning and preparedness are available here:

Overall Planning: <https://www.caloes.ca.gov/ICES...>

Earthquake: <https://earthquake.usgs.gov/contactus/menlo/prepare/>

Flood: <http://floodwarning.sfcjpa.org/>

Fire: <https://sf-fire.org/nert/disaster-preparedness-information-resources>

Good News from the Members of the SFCJPA

[Palo Alto Bike and Pedestrian Bridge over 101 is now open](#) – This steel structure spans Highway 101, connecting neighborhoods to the Bay Trail and other recreational opportunities near the bay.

[The San Mateo County Flood and Sea Level Rise Resiliency District](#) (also known as OneShoreline) was selected to receive \$8M in funding as part of California's \$15B budget to address climate change. The funding will be used to align and connect recent climate risk studies by Burlingame, Millbrae and the San Francisco International Airport, in order to develop a regional solution.

SFCJPA Board Meetings

December 16, 2021, 3:30 P.M. – Regular Board Meeting

January 27, 2022, 3:30 P.M. – Regular Board Meeting

February 24, 2022, 3:30 P.M. – Regular Board Meeting

Board meeting agendas and video conference links are posted at least 72 hours before the scheduled meeting on the [SFCJPA website](#).

Best wishes for a happy and healthy holiday season from the SFCJPA team. We hope you can take a walk along the creek or shoreline this holiday season.

If you would like a tour, just [contact us!](#)

We have included you in our distribution because you have participated in one or more of our community meetings, your organization or community members may be impacted by the work of the SFCJPA, or you are directly involved in the SFCJPA's projects.

We do not share your contact information with anyone!

Please feel welcome to forward to anyone we may have missed.

You can unsubscribe at the link below.

San Francisquito Creek Joint Powers Authority

2100 Geng Road, Suite 210, Palo Alto
CA 94303 United States

www.sfcjpa.org

You received this email because you signed up on our website or made a purchase from us.



[Unsubscribe](#)

mailer lite